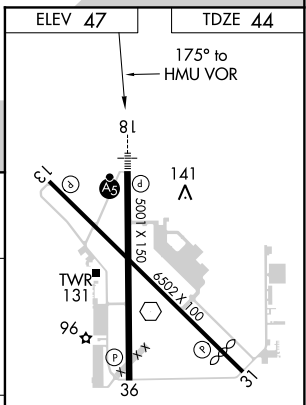
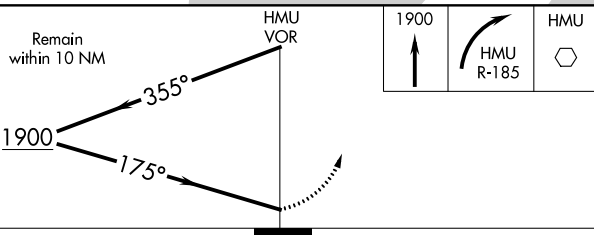
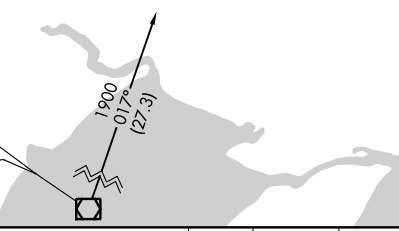
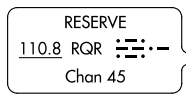
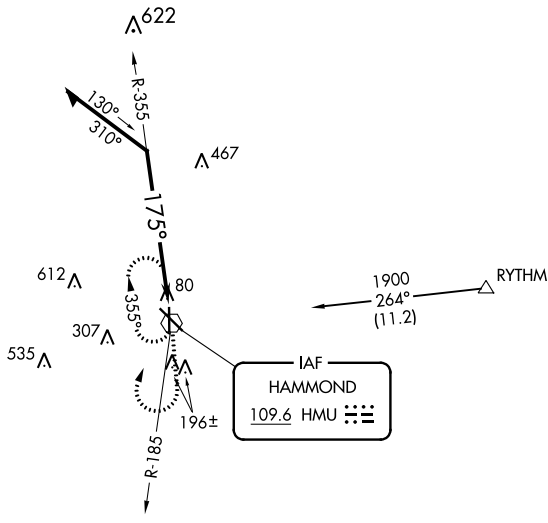
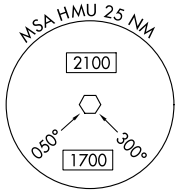


VOR HMU <b>109.6</b>	APP CRS <b>175°</b>	Rwy Idg 5001 TDZE 44 Apt Elev 47
-------------------------	------------------------	---

# VOR RWY 18

HAMMOND NORTHSORE RGNL (HDC)

<p><b>NA</b></p> <p>When local altimeter setting not received, use Louis Armstrong New Orleans Intl altimeter setting and increase all MDA 100 feet, increase S-18 Cat A/C/D and Circling Cat C/D visibilities ¼ mile. For inoperative MALS R when using Louis Armstrong New Orleans Intl altimeter setting increase Cat A visibility to 1 mile.</p>	<p>MALS R</p>	<p>MISSED APPROACH: Climb to 1900 then right turn via HMU VOR R-185 to HMU VOR and hold.</p>		
			<p>ATIS <b>118.325</b></p>	<p>NEW ORLEANS APP CON <b>119.3 350.35</b></p>



CATEGORY	A	B	C	D
S-18	820-½ 776 (800-½)	820-¾ 776 (800-¾)	820-1¾ 776 (800-1¾)	820-2 776 (800-2)
CIRCLING	820-1 773 (800-1)	820-1¼ 773 (800-1¼)	820-2¼ 773 (800-2¼)	820-2½ 773 (800-2½)

REIL Rwy 13, 31 and 36 **0**  
MIRL Rwy 13-31 and 18-36 **0**

SC-4, 25 APR 2019 to 23 MAY 2019

SC-4, 25 APR 2019 to 23 MAY 2019