

APP CRS	Rwy Idg	<b>5004</b>
<b>012°</b>	TDZE	<b>278</b>
	Apt Elev	<b>278</b>

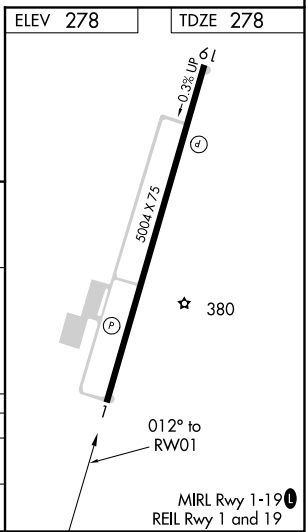
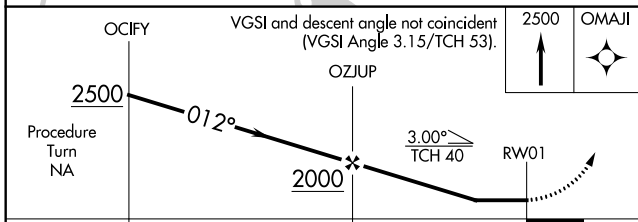
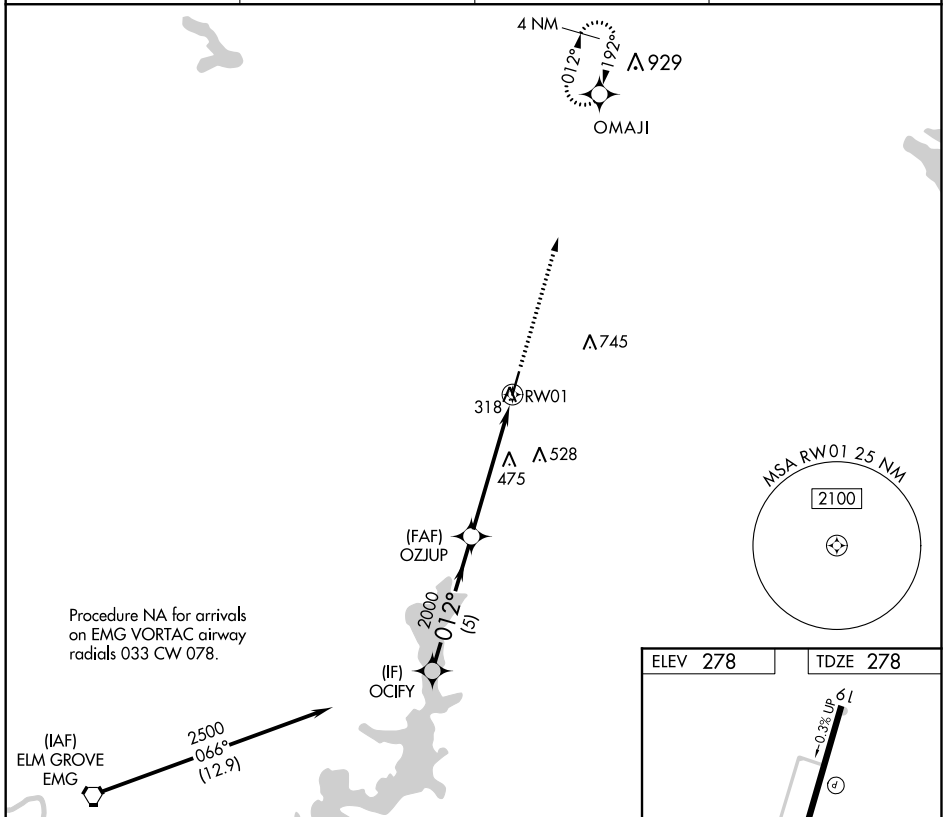
# RNAV (GPS) RWY 1

MINDEN (MNE)

**⚠** When VGSI inop, procedure NA at night. DME/DME RNP-0.3 NA. Helicopter visibility reduction below 1 SM NA. When local altimeter setting not received, use Barksdale AFB altimeter setting and increase all MDA 80 feet: visibility LNAV Cat C and D and Circling Cat C to 1¼.

**⚠** MISSED APPROACH: Climb to 2500 direct OMAJI and hold.

AWOS-3PT <b>119.325</b>	SHREVEPORT APP CON <b>118.6 350.2</b>	GCO <b>135.075</b>	UNICOM <b>122.8</b> (CTAF) <b>Ⓛ</b>
----------------------------	--	-----------------------	--



CATEGORY	A	B	C	D
LNAV MDA	780-1	502 (600-1)	780-1¾	502 (600-1¾)
CIRCLING	780-1 502 (600-1)	820-1 542 (600-1)	820-1½ 542 (600-1½)	840-2 562 (600-2)

SC-4, 25 APR 2019 to 23 MAY 2019

SC-4, 25 APR 2019 to 23 MAY 2019