

APP CRS	Rwy Idg	<b>5004</b>
<b>192°</b>	TDZE	<b>269</b>
	Apt Elev	<b>278</b>

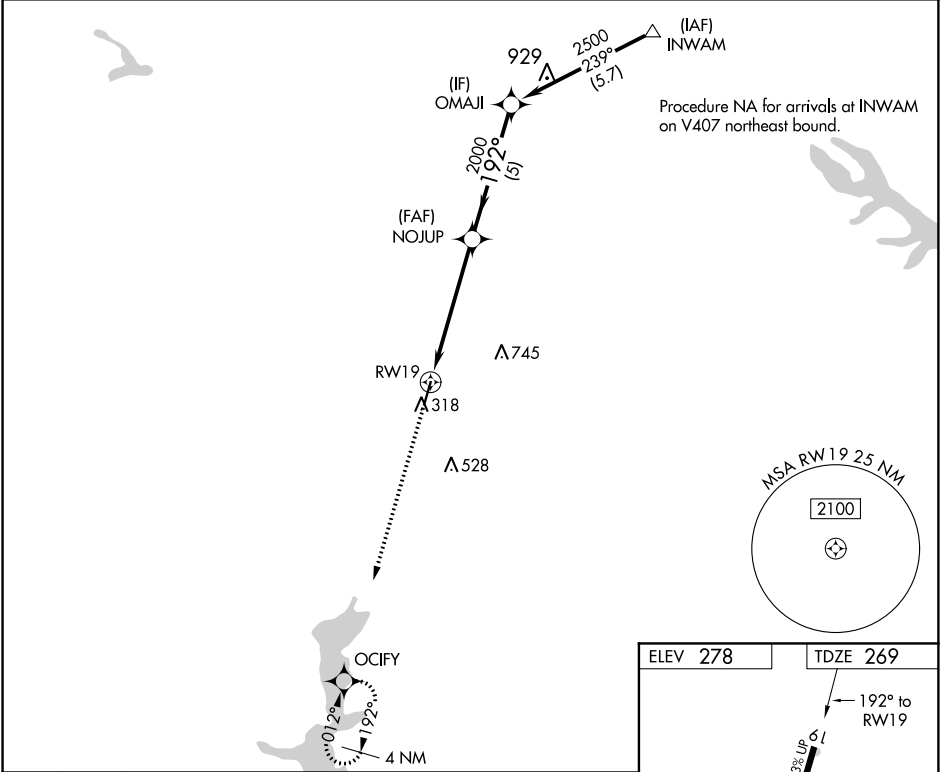
# RNAV (GPS) RWY 19

MINDEN (MNE)

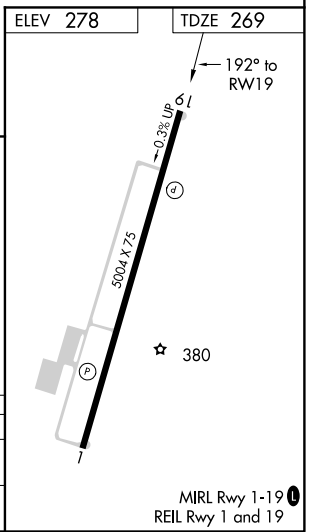
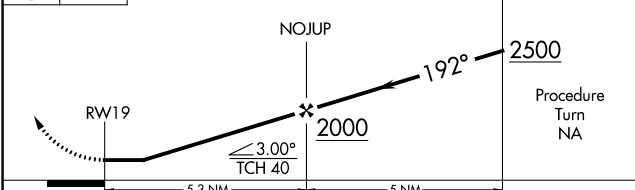
**⚠** When VGSI inop, procedure NA at night. DME/DME RNP-0.3 NA. Helicopter visibility reduction below 1 SM NA. When local altimeter setting not received, use Barksdale AFB altimeter setting and increase all MDA 80 feet: increase visibility LNAV Cats C and D and Circling Cat C to 1¼.

**⚠** MISSED APPROACH: Climb to 2500 direct OCIFY and hold.

AWOS-3PT <b>119.325</b>	SHREVEPORT APP CON <b>118.6 350.2</b>	GCO <b>135.075</b>	UNICOM <b>122.8</b> (CTAF) <b>📻</b>
----------------------------	--	-----------------------	--



**2500** **OCIFY** VGSI and descent angles not coincident (VGSI Angle 3.75/TCH 64).



CATEGORY	A	B	C	D
LNAV MDA	820-1	551 (600-1)	820-1½	551 (600-1½)
CIRCLING	820-1	542 (600-1)	820-1½	840-2
			542 (600-1½)	562 (600-2)

SC-4, 25 APR 2019 to 23 MAY 2019

SC-4, 25 APR 2019 to 23 MAY 2019