

WAAS CH 99524 W30A	APP CRS 301°	Rwy Idg TDZE Apt Elev	3600 1549 1549
--	------------------------	-----------------------------	---

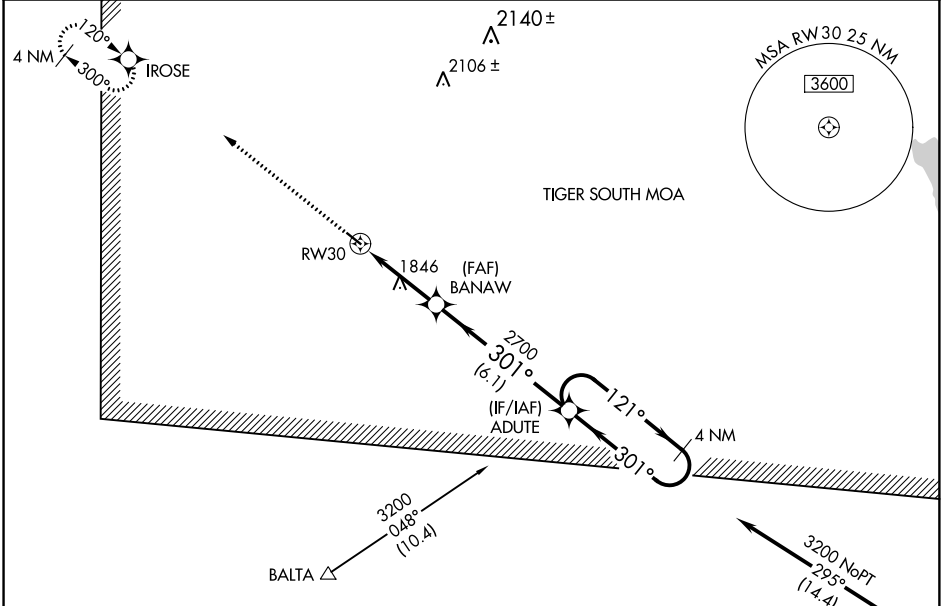
RNAV (GPS) RWY 30

RUGBY MUNI (RUG)

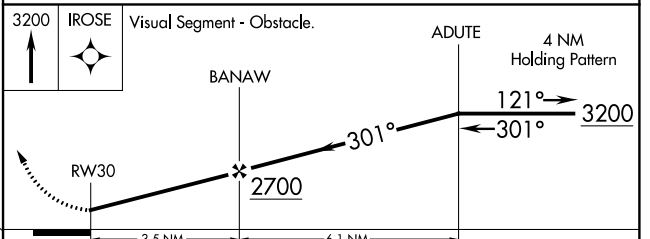
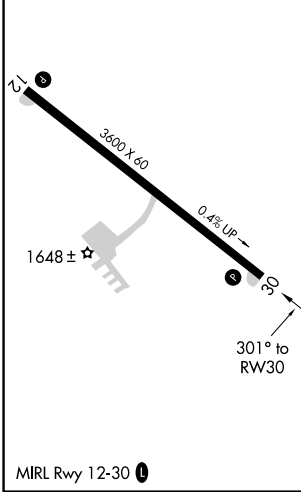
▽ DME/DME RNP-0.3 NA. When local altimeter setting not received, use Devils Lake altimeter setting and increase all MDA 140 feet, increase LP and LNAV Cats B/C visibility ¼ mile, and Circling Cat B visibility ¼ mile and Cat C visibility ½ mile. Rwy 30 helicopter visibility reduction below ¾ SM NA.

▲ MISSED APPROACH: Climb to 3200 direct IROSE and hold.

AWOS-3 118.475	MINNEAPOLIS CENTER 127.6 279.6	GRAND FORKS RADIO 122.2	UNICOM 122.8 (CTAF)
--------------------------	--	-----------------------------------	-------------------------------



ELEV 1549	TDZE 1549
-----------	-----------



CATEGORY	A	B	C	D
LP MDA	2160-1	611 (700-1)	2160-1¾ 611 (700-1¾)	NA
LNAV MDA	2160-1	611 (700-1)	2160-1¾ 611 (700-1¾)	NA
CIRCLING	2160-1	611 (700-1)	2160-1¾ 611 (700-1¾)	NA

NC-1, 25 APR 2019 to 23 MAY 2019

NC-1, 25 APR 2019 to 23 MAY 2019