

HUDSON, NEW YORK

AL-6204 (FAA)

19115

NDB-A

COLUMBIA COUNTY (1B1)

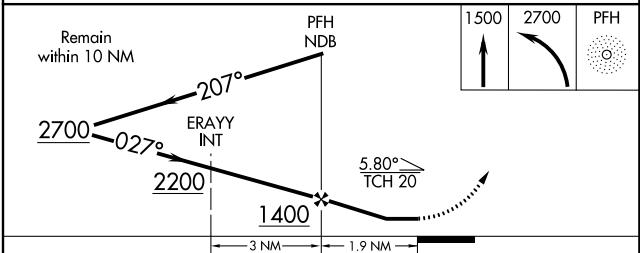
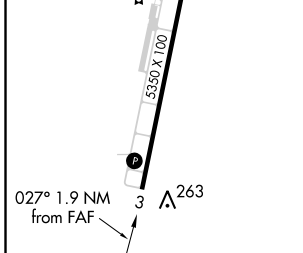
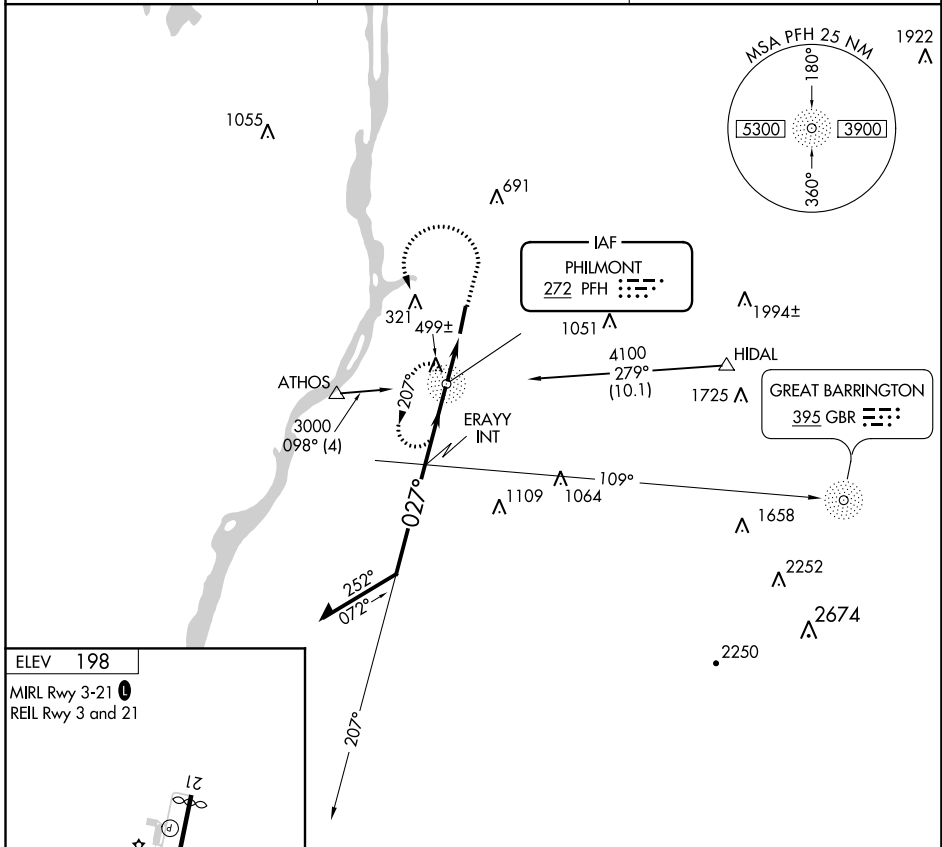
NDB PFH <b>272</b>	APP CRS <b>027°</b>	Rwy Idg TDZE Apt Elev <b>N/A</b> <b>N/A</b> <b>198</b>
-----------------------	------------------------	---

**▼** Helicopter visibility reduction below 3/4 SM NA. When local altimeter setting not received, use Albany altimeter setting and increase all MDA 80 feet, increase Cat C visibility 1/2 mile and Cat D visibility 1/4 mile.

**▲ NA**

**MISSED APPROACH:** Climb to 1500 then climbing left turn to 2700 direct PFH NDB and hold.

AWOS-3 <b>133.525</b>	ALBANY APP CON <b>132.825 307.2</b>	UNICOM <b>123.05 (CTAF)</b>
--------------------------	--	--------------------------------



FAF to MAP 1.9 NM		CATEGORY	A	B	C	D
Knots	60 90 120 150 180	CIRCLING	800-1 602 (700-1)	820-1 622 (700-1)	860-1 3/4 662 (700-1 3/4)	920-2 1/4 722 (800-2 1/4)
Min:Sec	1:54 1:16 0:57 0:46 0:38					

HUDSON, NEW YORK

Amdt 4B 17SEP15

42°17'N - 73°43'W

COLUMBIA COUNTY (1B1)

NDB-A

NE-2, 25 APR 2019 to 23 MAY 2019

NE-2, 25 APR 2019 to 23 MAY 2019