

WAAS CH 77715 W03A	APP CRS 025°	Rwy Idg 5350 TDZE 198 Apt Elev 198
---------------------------------	------------------------	---

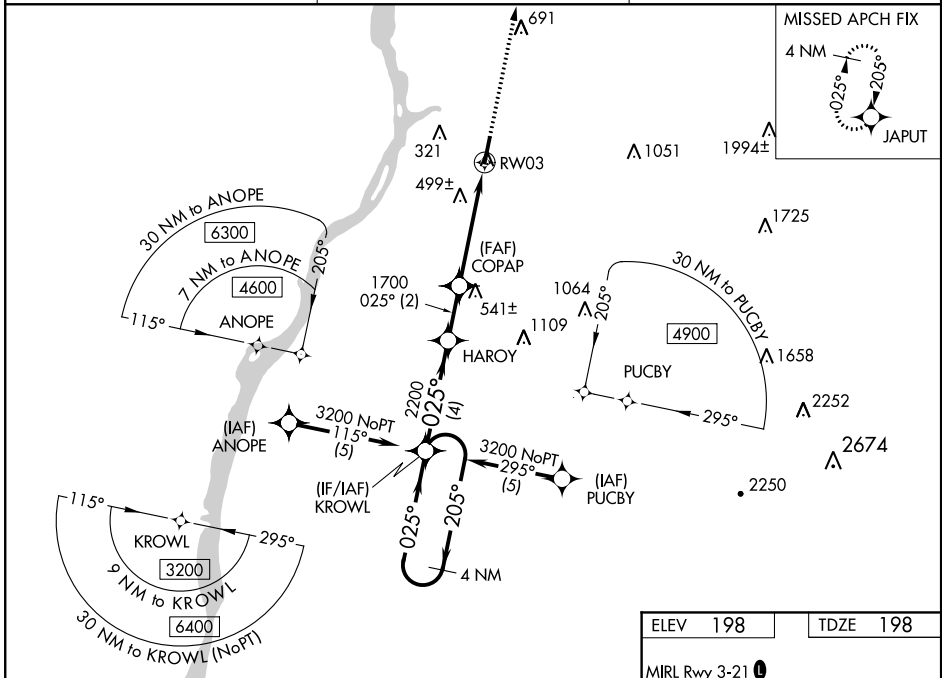
RNAV (GPS) RWY 3

COLUMBIA COUNTY (1B1)

NA Baro-VNAV NA when using Albany altimeter setting. For uncompensated Baro-VNAV systems, LNAV/VNAV NA below -15°C (5°F) or above 48°C (118°F). DME/DME RNP-0.3 NA. Helicopter visibility reduction below ¼ SM NA. When local altimeter setting is not received, use Albany altimeter setting and increase all DA 76 feet and all MDA 80 feet, increase LPV all Cats, LNAV/VNAV all Cats, LNAV Cats C and D, and Circling Cat D visibility ¼ mile, and Circling Cat C visibility ½ mile.

MISSED APPROACH: Climb to 3200 direct JAPUT and hold, continue climb-in-hold to 3200.

AWOS-3 133.525	ALBANY APP CON 132.825 307.2	UNICOM 123.05 (CTAF)
--------------------------	--	--------------------------------

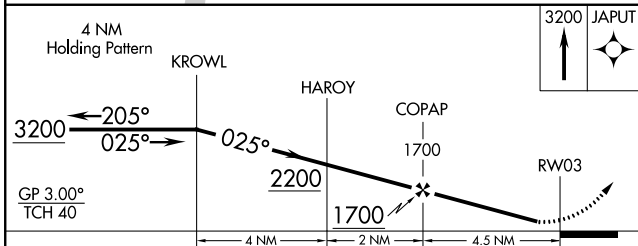


NE-2. 25 APR 2019 to 23 MAY 2019

NE-2. 25 APR 2019 to 23 MAY 2019

ELEV 198	TDZE 198
-----------------	-----------------

MIRL Rwy 3-21
REL Rwy 3 and 21



CATEGORY	A	B	C	D
LPV DA		500-1	302 (400-1)	
LNAV/VNAV DA		842-2¼	644 (700-2¼)	
LNAV MDA	760-1	562 (600-1)	760-1½ 562 (600-1½)	760-1¾ 562 (600-1¾)
CIRCLING	760-1 562 (600-1)	820-1 622 (700-1)	860-1¾ 662 (700-1¾)	920-2¼ 722 (800-2¼)

