

WAAS CH 78015 W12A	APP CRS 117°	Rwy ldg 4402 TDZE 319 Apt Elev 319
--	------------------------	---

AL-6220 (FAA)

RNAV (GPS) RWY 12

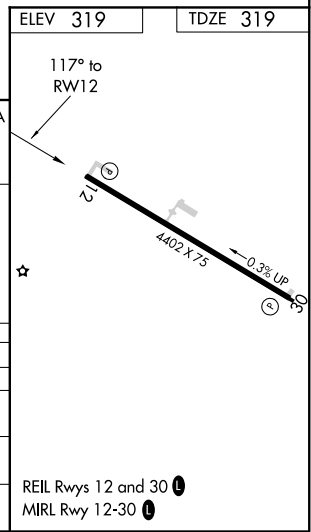
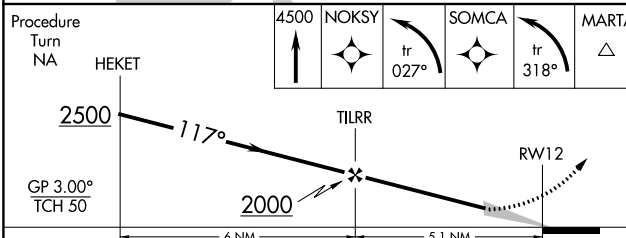
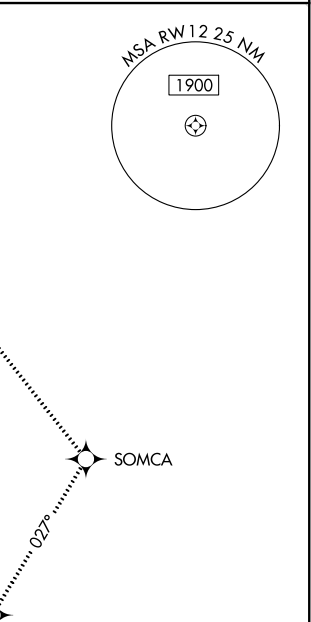
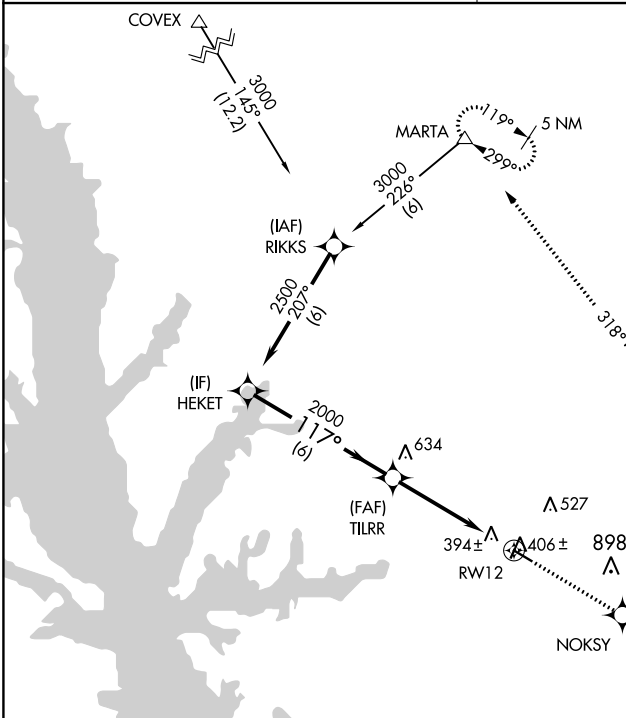
HART (3R4)

RNP APCH.
 ▼ Baro-VNAV NA. Use Fort Polk altimeter setting; when not received, use Natchitoches altimeter setting and increase all DA 2 feet and all MDA 20 feet, increase LPV visibility all Cats ¼ mile, and increase Circling Cat C visibility ¼ mile.
 ▲ NA

MISSED APPROACH: Climb to 4500 direct NOKSY and left turn via track 027° to SOMCA and left turn via track 318° to MARTA and hold.

POLK APP CON
123.7 261.3

UNICOM
122.8 (CTAF) 0



CATEGORY	A		B		C		D
	LPV	DA	LPV	DA	LPV	DA	NA
LPV DA	713-1¼		394 (400-1¼)				NA
LNAV/VNAV DA	765-1½		446 (500-1½)				NA
LNAV MDA	820-1 501 (600-1)		820-1½ 501 (600-1½)				NA
CIRCLING	900-1 581 (600-1)		900-1½ 581 (600-1½)				NA

SC-4, 25 APR 2019 to 23 MAY 2019

SC-4, 25 APR 2019 to 23 MAY 2019