

APP CRS **282°**
 Rwy ldg **4402**
 TDZE **311**
 Apt Elev **319**

AL-6220 (FAA)

RNAV (GPS) RWY 30

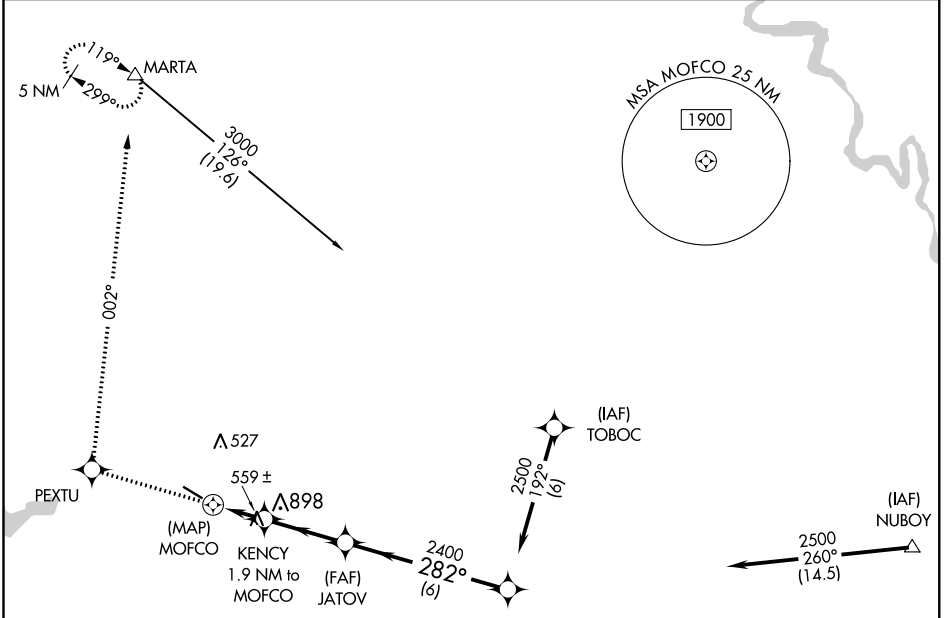
HART (3R4)

RNP APCH
 ▽ Rwy 30 helicopter visibility reduction below ¼ SM NA.
 Use Fort Polk altimeter setting; when not received, use Natchitoches altimeter setting and increase all MDA 20 feet and increase LNAV and Circling Cat C visibility ¼ mile.
 ▲ NA

MISSED APPROACH: Climb to 4500 direct PEXTU and right turn via track 002° to MARTA and hold, continue climb in hold to 4500.

POLK APP CON
123.7 261.3

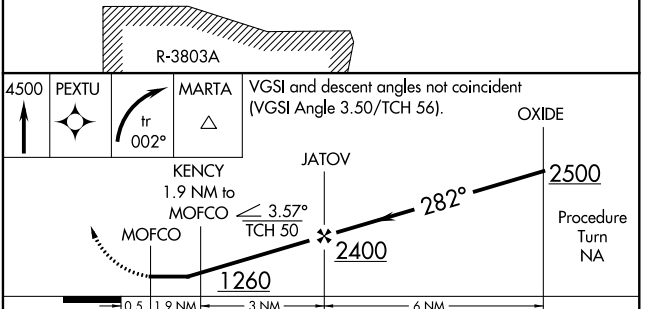
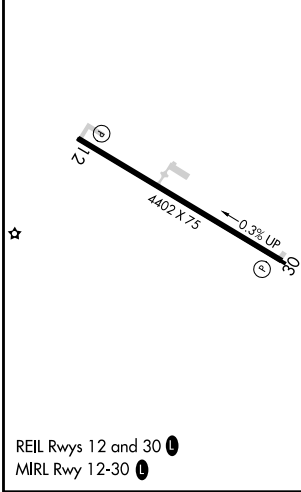
UNICOM
122.8 (CTAF) 0



SC-4, 25 APR 2019 to 23 MAY 2019

SC-4, 25 APR 2019 to 23 MAY 2019

ELEV **319** TDZE **311**



CATEGORY	A	B	C	D
LNAV MDA	900-1 589 (600-1)		900-1½ 589 (600-1½)	NA
CIRCLING	900-1 581 (600-1)		900-1½ 581 (600-1½)	NA