

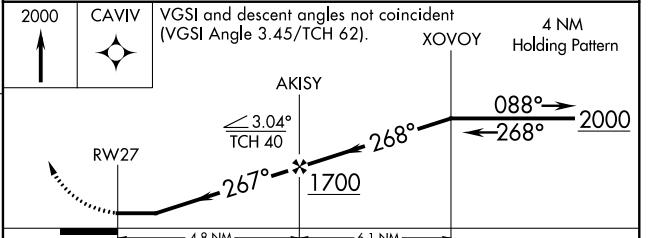
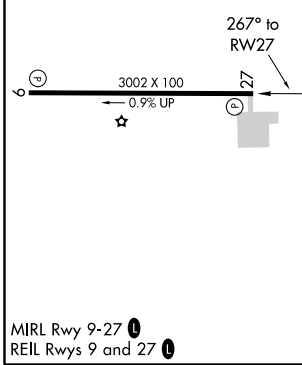
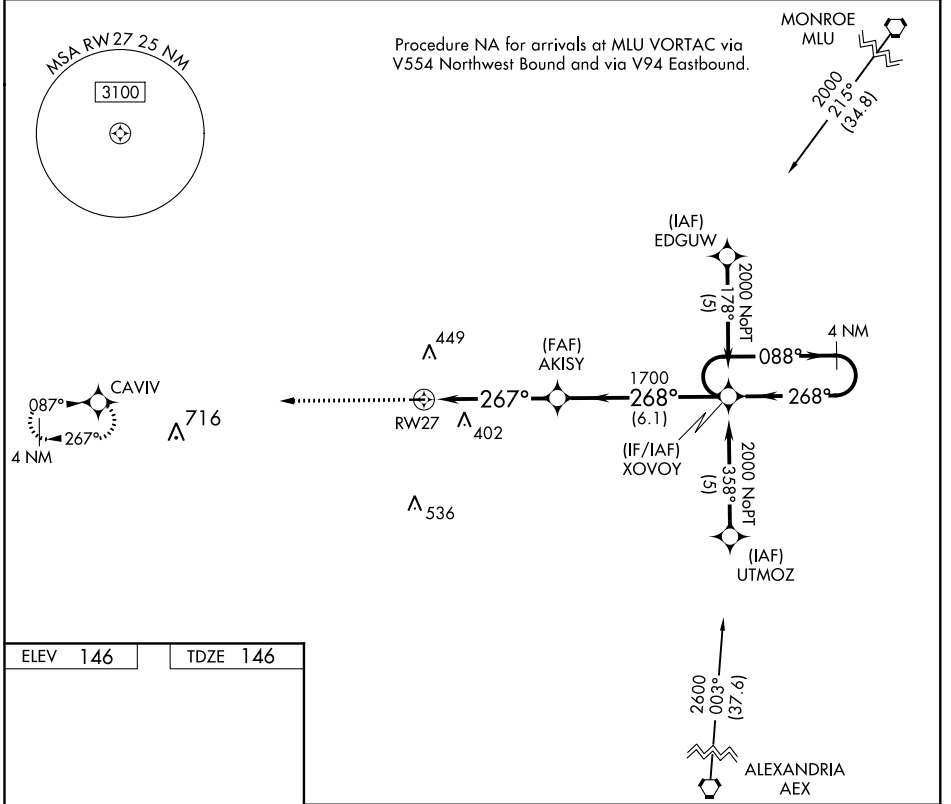
APP CRS 267°	Rwy Idg 3002
	TDZE 146
	Apt Elev 146

RNAV (GPS) RWY 27

DAVID G JOYCE (ØR5)

<p>▽ DME/DME RNP-0.3 NA. Use Alexandria Intl altimeter setting, when not received use Esler Rgnl altimeter setting. Procedure NA at night. Helicopter visibility reduction below 1 SM NA.</p>	<p>MISSED APPROACH: Climb to 2000 direct CAVIV and hold.</p>
--	--

<p>POLK APP CON 125.4 302.2</p>	<p>UNICOM 122.7 (CTAF) 0</p>
--	---



CATEGORY	A	B	C	D
LNAV MDA	740-1	594 (600-1)		NA
CIRCLING	740-1	594 (600-1)		NA

SC-4, 25 APR 2019 to 23 MAY 2019

SC-4, 25 APR 2019 to 23 MAY 2019