

APP CRS	Rwy Idg	3002
087°	TDZE	146
	Apt Elev	146

RNAV (GPS) RWY 9

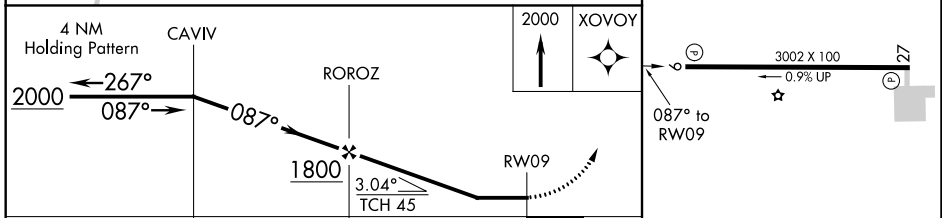
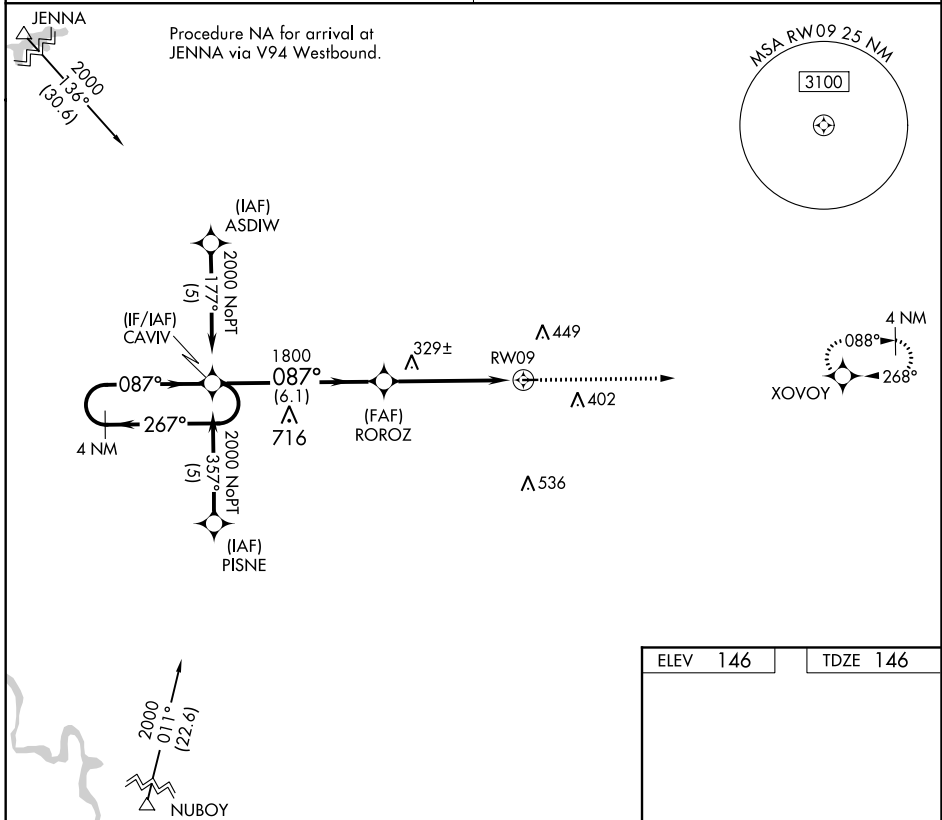
DAVID G JOYCE (ØR5)

▼ DME/DME RNP-0.3 NA. Use Alexandria Intl altimeter setting, when not received use Esler Rgnl altimeter setting. Procedure NA at night. Helicopter visibility reduction below 1 SM NA.

▲ NA MISSED APPROACH: Climb to 2000 direct XOVVOY and hold.

POLK APP CON
125.4 302.2

UNICOM
122.7 (CTAF) 0



CATEGORY	A	B	C	D
LNAV MDA	680-1	534 (600-1)		NA
CIRCLING	700-1	554 (600-1)		NA

ELEV 146	TDZE 146
----------	----------

MIRL Rwy 9-27 0
REIL Rwys 9 and 27 0

SC-4, 25 APR 2019 to 23 MAY 2019

SC-4, 25 APR 2019 to 23 MAY 2019