

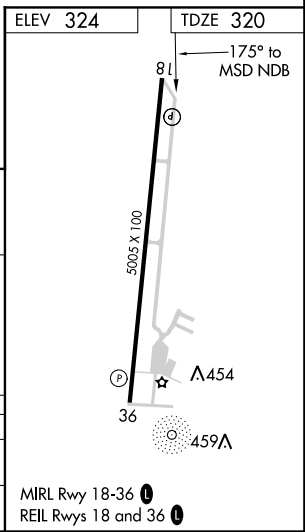
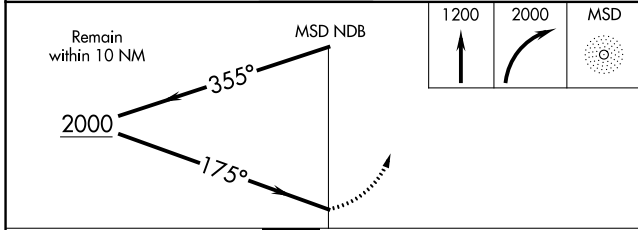
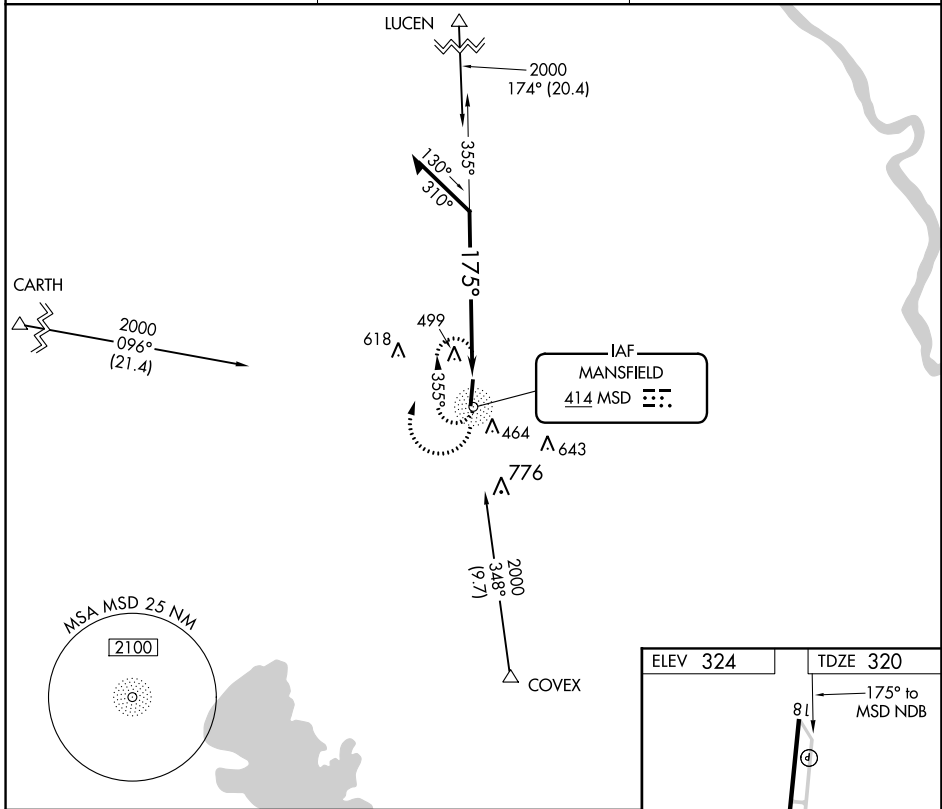
NDB	MSD	APP CRS	Rwy Idg	5005
<b>414</b>		<b>175°</b>	TDZE	<b>320</b>
			Apt Elev	<b>324</b>

**NDB RWY 18**  
C E 'RUSTY' WILLIAMS (3F3)

**▼** Use Shreveport Rgnl altimeter setting. Procedure NA at night.  
**▲ NA** Rwy 18 helicopter visibility reduction below 1 SM NA.

**MISSED APPROACH:** Climb to 2000, then climbing right turn to 2000 direct MSD NDB and hold.

AWOS-3PT <b>119.125</b>	SHREVEPORT APP CON ★ <b>119.9 335.55</b>	UNICOM <b>122.8 (CTAF) 0</b>
----------------------------	---	---------------------------------



CATEGORY	A	B	C	D
S-18	980-1 660 (700-1)		980-1¾ 660 (700-1¾)	NA
CIRCLING	980-1 656 (700-1)		980-1¾ 656 (700-1¾)	NA

SC-4, 25 APR 2019 to 23 MAY 2019

SC-4, 25 APR 2019 to 23 MAY 2019