

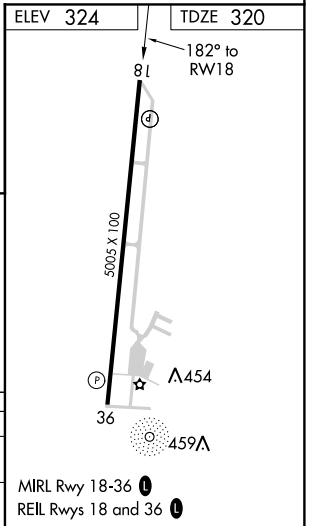
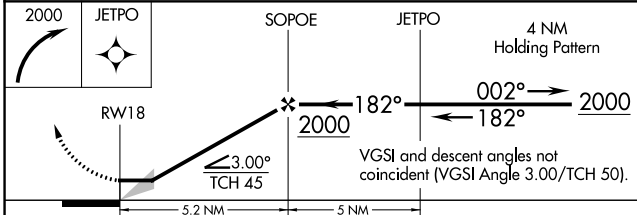
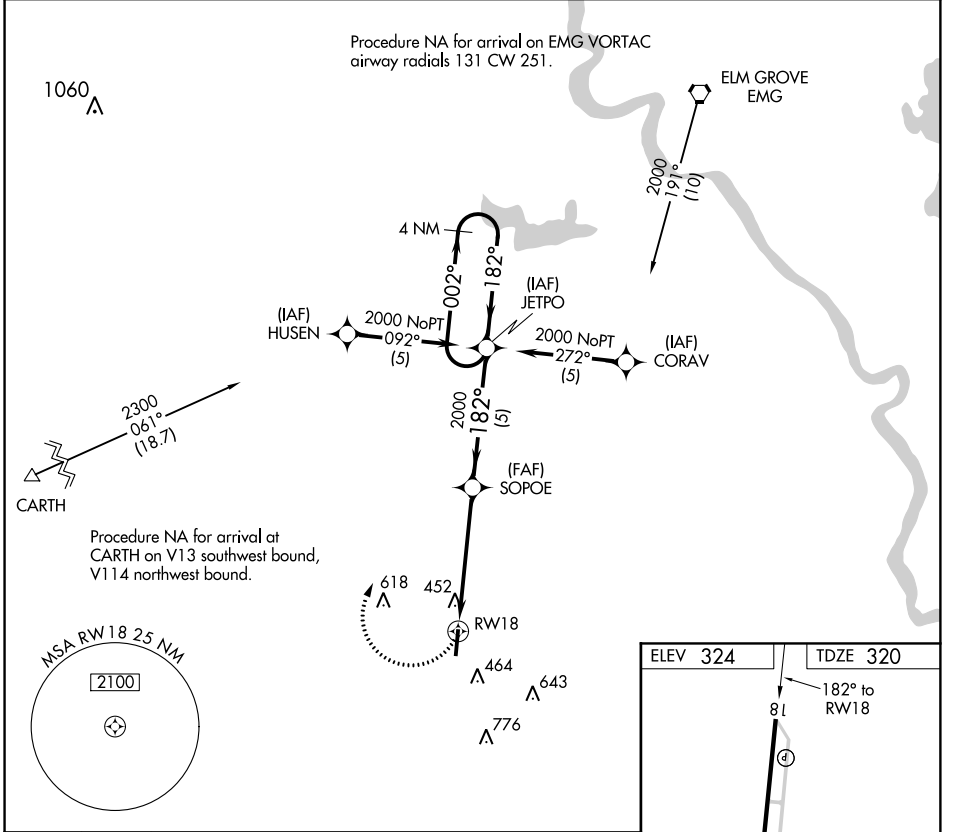
APP CRS 182°	Rwy Idg TDZE Apt Elev	5005 320 324
------------------------	-----------------------------	---

RNAV (GPS) RWY 18

C E 'RUSTY' WILLIAMS (3F3)

RNP APCH.	Use Shreveport Rgnl altimeter setting. Procedure NA at night. Rwy 18 helicopter visibility reduction below 1 SM NA.	MISSED APPROACH: Climbing right turn to 2000 direct JETPO WP and hold.
-----------	--	--

AWOS-3PT 119.125	SHREVEPORT APP CON ★ 119.9 335.55	UNICOM 122.8 (CTAF) 0
----------------------------	---	---------------------------------



CATEGORY	A	B	C	D
RNAV MDA	780-1	460 (500-1)	780-1¼ 460 (500-1¼)	NA
CIRCLING	880-1	556 (600-1)	880-1½ 556 (600-1½)	NA

SC-4, 25 APR 2019 to 23 MAY 2019

SC-4, 25 APR 2019 to 23 MAY 2019