

WAAS CH 72613 W18A	APP CRS 183°	Rwy Idg 5002 TDZE 119 Apt Elev 119
--	------------------------	---

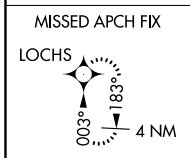
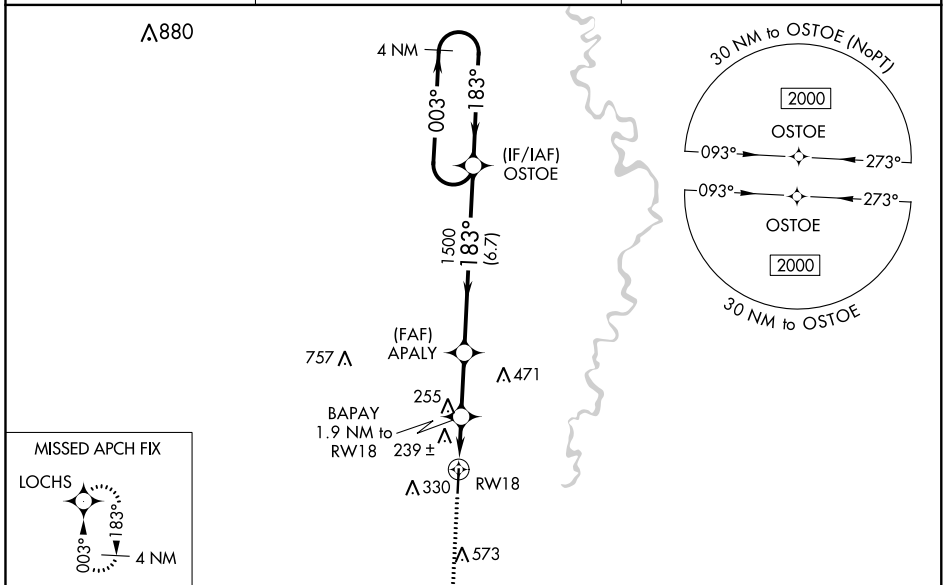
RNAV (GPS) RWY 18

GEORGE R CARR MEMORIAL AIR FIELD (B.X.A)

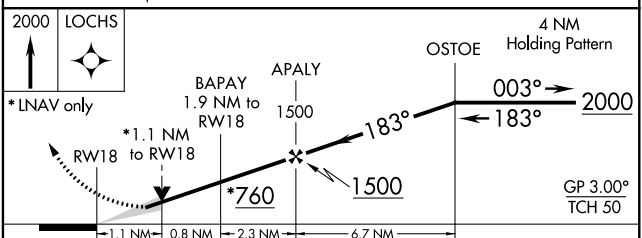
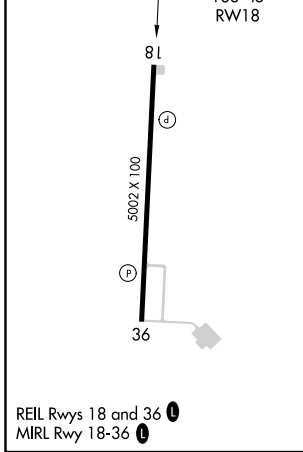
⚠ For uncompensated Baro-VNAV systems, LNAV/VNAV NA below -15°C (5°F) or above 54°C (130°F). DME/DME RNP-0.3 NA. When local altimeter setting not received, use Lakefront altimeter setting; increase all DA 124 feet and all MDA 140 feet; increase LPV visibility all Cats 3/8 mile, increase LNAV/VNAV visibility all Cats 1/2 mile, increase LNAV visibility Cat C 3/8 mile, and increase Circling visibility Cat C 1/2 mile. VDP and Baro-VNAV NA when using Lakefront altimeter setting.

MISSSED APPROACH:
Climb to 2000 direct LOCHS and hold.

AWOS-3PT 118.025	HOUSTON CENTER 126.8 327.8	UNICOM 122.8 (CTAF) 0
----------------------------	--------------------------------------	---------------------------------



ELEV 119	TDZE 119
----------	----------



CATEGORY	A	B	C	D
LPV DA	386-7/8		267 (300-7/8)	NA
LNAV/VNAV DA	541-13/8		422 (500-13/8)	NA
LNAV MDA	500-1	381 (400-1)	500-11/8 381 (400-11/8)	NA
CIRCLING	620-1	501 (600-1)	720-13/4 601 (700-13/4)	NA

SC-4, 25 APR 2019 to 23 MAY 2019

SC-4, 25 APR 2019 to 23 MAY 2019