

# RNAV (GPS) RWY 26

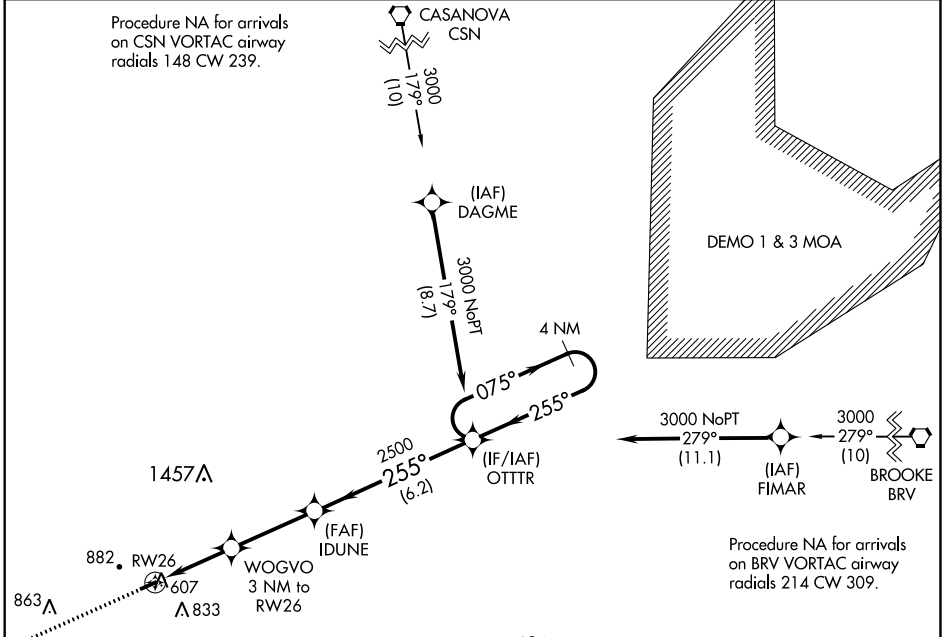
ORANGE COUNTY (OMH)

APP CRS	Rwy Idg	<b>3200</b>
<b>255°</b>	TDZE	<b>464</b>
	Apt Elev	<b>464</b>

**⚠** DME/DME RNP-0.3 NA. When local altimeter setting not received, use Charlottesville altimeter setting and increase all MDA 80 feet. Rwy 26 helicopter visibility reduction below 1 SM NA. Straight-in Rwy 26 NA at night, Circling Rwy 26 NA at night.

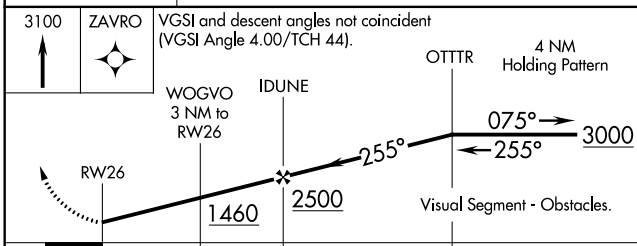
**⚠** MISSED APPROACH: Climb to 3100 direct ZAVRO and hold.

<b>AWOS-3</b> <b>118.075</b>	<b>POTOMAC APP CON</b> <b>132.85 323.125</b>	<b>UNICOM</b> <b>122.8 (CTAF) 0</b>
---------------------------------	---	--

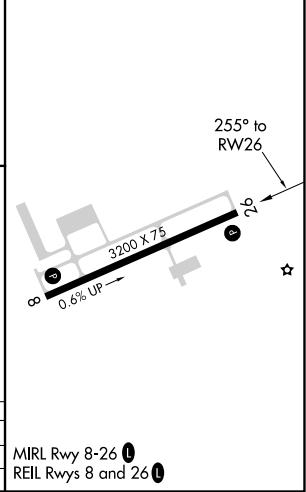


NE-3, 25 APR 2019 to 23 MAY 2019

NE-3, 25 APR 2019 to 23 MAY 2019



ELEV 464	TDZE 464
----------	----------



CATEGORY	A	B	C	D
LNAV MDA	980-1	516 (600-1)		NA
<b>C</b> CIRCLING	1300-1¼	836 (900-1¼)		NA