

VORTAC GVE <b>115.6</b> Chan <b>103</b>	APP CRS <b>026°</b>	Rwy Idg TDZE Apt Elev	<b>N/A</b> <b>N/A</b> <b>464</b>
---	------------------------	-----------------------------	--

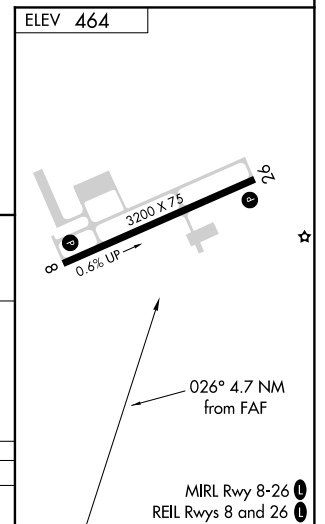
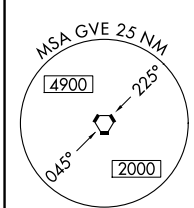
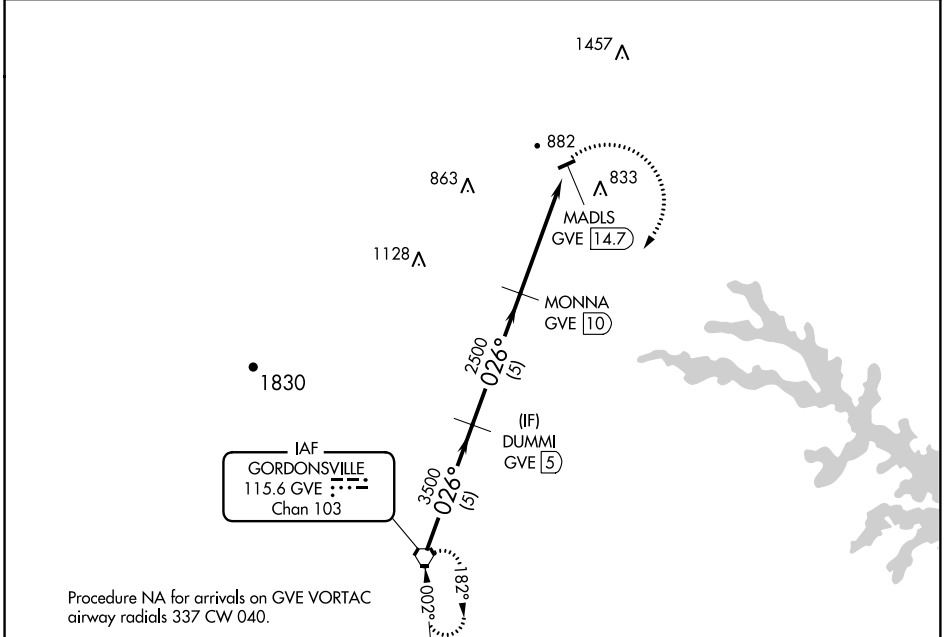
# VOR/DME-A

ORANGE COUNTY (OMH)

**⚠** Circling to Rwy 26 NA at night. When local altimeter setting not received, use Charlottesville altimeter setting and increase all MDA 80 feet.  
**⚠** Helicopter visibility reduction below 1 SM NA.

MISSED APPROACH: Climbing right turn to 3500 direct GVE VORTAC and hold.

AWOS-3 <b>118.075</b>	POTOMAC APP CON <b>132.85 323.125</b>	UNICOM <b>122.8</b> (CTAF) <b>📻</b>
--------------------------	--	--



	GVE VORTAC	DUMMI GVE <b>5</b>	MONNA GVE <b>10</b>	MADLS GVE <b>14.7</b>	3500 GVE <b>📻</b>
	3500	3500	2500		
	5 NM	5 NM	4.7 NM		
CATEGORY	A	B	C	D	
<b>📻</b> CIRCLING	2000-1¼ 1536 (1600-1¼)	2000-1½ 1536 (1600-1½)	NA		

NE-3, 25 APR 2019 to 23 MAY 2019

NE-3, 25 APR 2019 to 23 MAY 2019