

SN NDB 312	APP CRS 216°	Rwy Idg TDZE Apt Elev	N/A N/A 271
----------------------	------------------------	-----------------------------	--

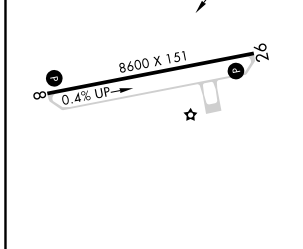
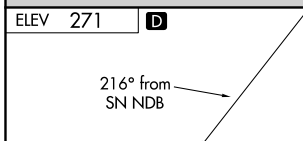
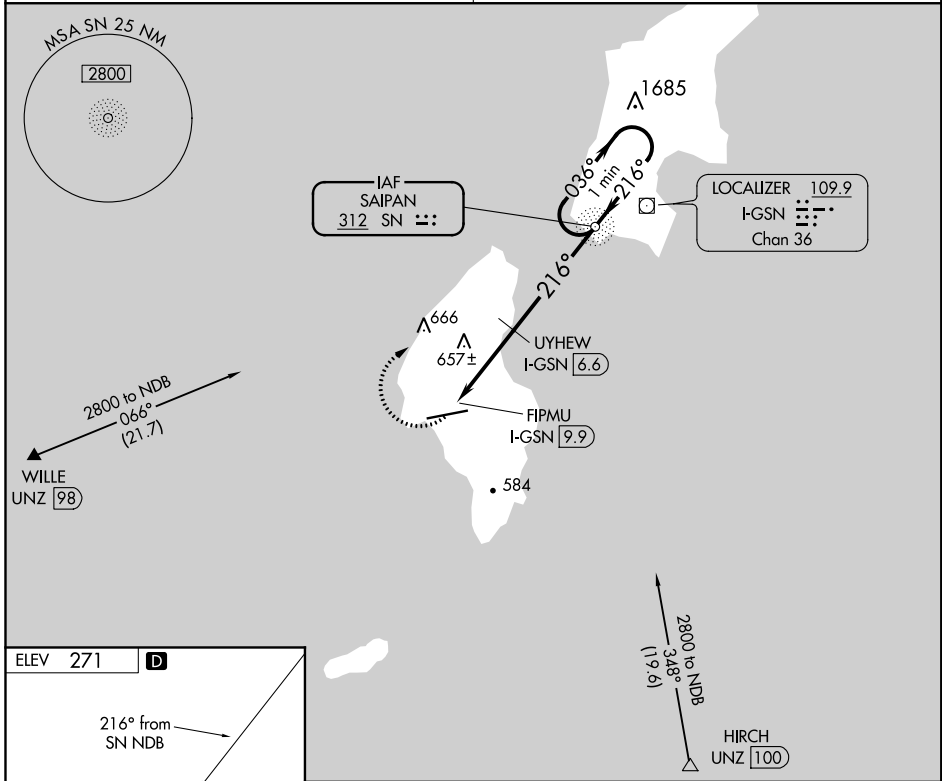
NDB-A

TINIAN INTL (TNI)(PGWT)

NA Obtain local altimeter setting on CTAF; when not received, use Saipan altimeter setting and increase all MDA 40 feet, and all Cats visibility ¼ mile. Increase UYHEW fix minimums Cats C and D visibility ¼ mile.

MISSED APPROACH: Climbing right turn to 2800 direct SN NDB and hold.

GUAM APP CON 118.4 290.5	SAIPAN RADIO 123.6 (CTAF) 0
------------------------------------	---------------------------------------



ELEV 271	D
MIRL Rwy 8-26 0	
REIL Rwy 8 and 26 0	
FAF to MAP 8 NM	
Knots	60 90 120 150 180
Min:Sec	8:00 5:20 4:00 3:12 2:40

2800 SN	SN NDB	One Minute Holding Pattern
UYHEW I-GSN 6.6		036° → 2800
FIPMU I-GSN 9.9		← 216°
1060*		*1100 when using Saipan altimeter setting.
3.3 NM		4.7 NM

CATEGORY	A	B	C	D
C CIRCLING	1060-1	789 (800-1)	1060-2¼ 789 (800-2¼)	1060-2½ 789 (800-2½)
UYHEW FIX MINIMUMS				
C CIRCLING	960-1	689 (700-1)	1000-2 729 (800-2)	1060-2½ 789 (800-2½)

PAC. 25 APR 2019 to 20 JUN 2019

PAC. 25 APR 2019 to 20 JUN 2019