

# RNAV (GPS) RWY 26

TINIAN INTL (TNI)(PGWT)

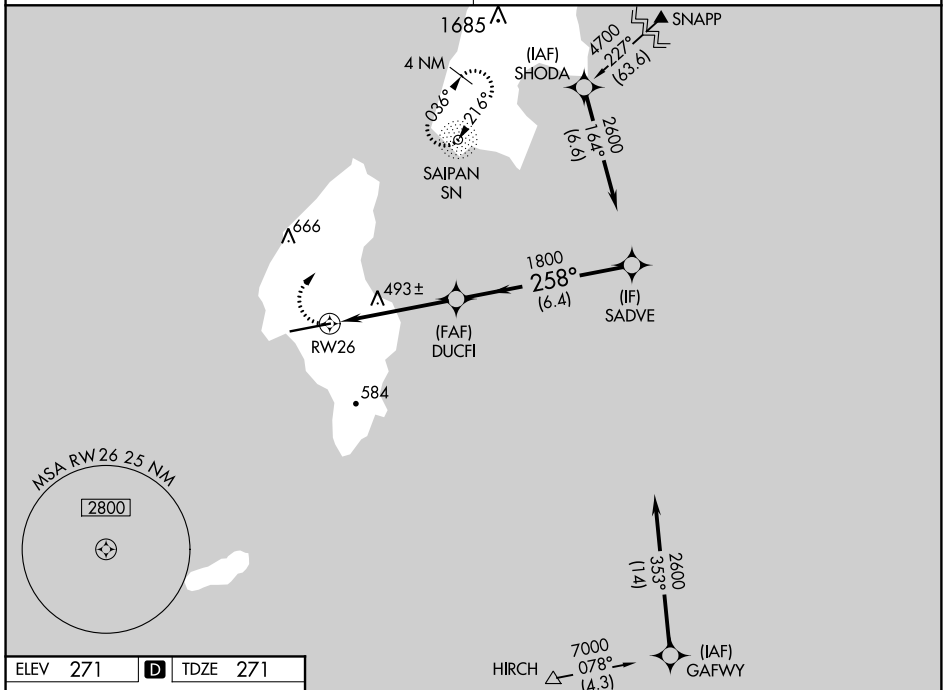
APP CRS	Rwy Idg	<b>8600</b>
<b>258°</b>	TDZE	<b>271</b>
	Apt Elev	<b>271</b>

**▼** DME/DME RNP-0.3 NA. Obtain local altimeter setting on CTAF; when not received, use Saipan altimeter setting.  
**▲** VDP NA when using Saipan altimeter setting.

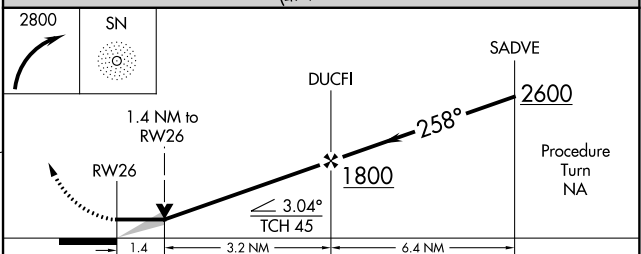
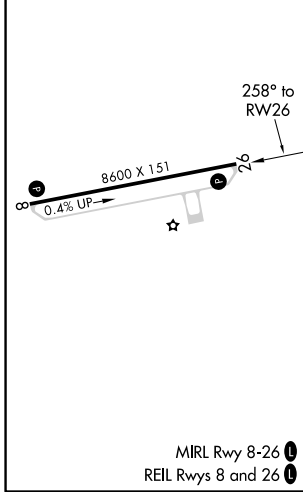
**MISSED APPROACH:** Climbing right turn to 2800 direct SN NDB and hold, continue climb-in-hold to 2800.

GUAM APP CON  
**118.4 290.5**

SAIPAN RADIO  
**123.6 (CTAF) 0**



ELEV	271	<b>D</b>	TDZE	271
------	-----	----------	------	-----



CATEGORY	A	B	C	D
LNAV MDA	760-1	489 (500-1)	760-1¼ 489 (500-1¼)	760-1½ 489 (500-1½)
CIRCLING	760-1	489 (500-1)	800-1½ 529 (600-1½)	960-2¼ 689 (700-2¼)
<b>SAIPAN ALTIMETER SETTING MINIMUMS</b>				
LNAV MDA	780-1	509 (600-1)	780-1½	509 (600-1½)
CIRCLING	800-1	529 (600-1)	840-1½ 569 (600-1½)	1000-2¼ 729 (800-2¼)

MIRL Rwy 8-26 **0**  
 REIL Rwy 8 and 26 **0**

PAC, 25 APR 2019 to 20 JUN 2019

PAC, 25 APR 2019 to 20 JUN 2019