

WAAS CH 82037 W36A	APP CRS 003°	Rwy Idg TDZE 650 Apt Elev 654	5999
--	------------------------	---	-------------

RNAV (GPS) RWY 36

ILLINOIS VALLEY RGNL-WALTER A DUNCAN FIELD (VYS)

▼ For uncompensated Baro-VNAV systems, LNAV/VNAV NA below -16°C (4°F) or above 54°C (130°F). DME/DME RNP-0.3 NA. When local altimeter setting not received, use Marshall County altimeter setting and increase all DA 62 feet and all MDA 80 feet; increase LNAV Cats C/D visibility to 1 1/8 miles, Circling Cat C visibility to 2 miles and Circling Cat D visibility to 3 miles. Inoperative table does not apply to LPV, LNAV/VNAV and LNAV. For inoperative ODALS when using Marshall County altimeter setting, inoperative table does not apply to LNAV Cats A/B; increase LNAV Cat D visibility to 1 3/8. VDP and Baro-VNAV NA with Marshall County altimeter setting.

ODALS

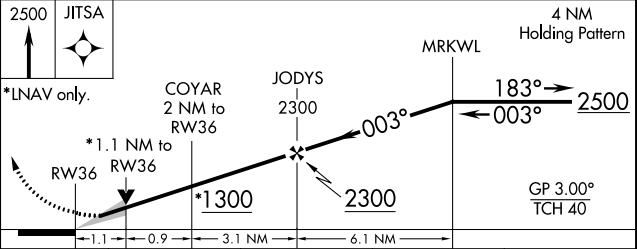
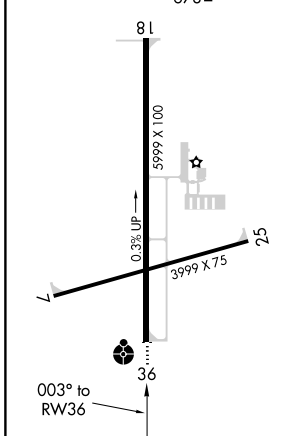
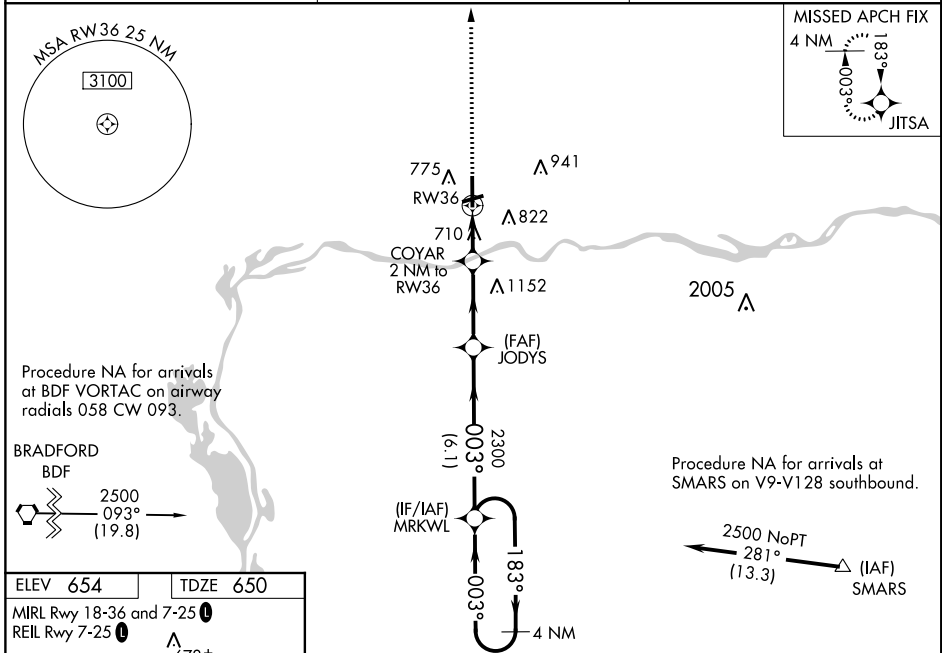


MISSED APPROACH: Climb to 2500 direct JITSA and hold.

AWOS-3
120.025

CHICAGO CENTER
123.75 259.1

UNICOM
123.0 (CTAF)



CATEGORY	A	B	C	D
LPV DA		900-1	250 (300-1)	
LNAV/VNAV DA		900-1	250 (300-1)	
LNAV MDA		1020-1	370 (400-1)	
CIRCLING	1120-1 466 (500-1)	1240-1 586 (600-1)	1260-1 3/4 606 (700-1 3/4)	1460-2 1/2 806 (900-2 1/2)