

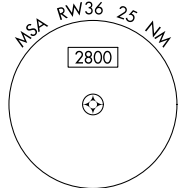
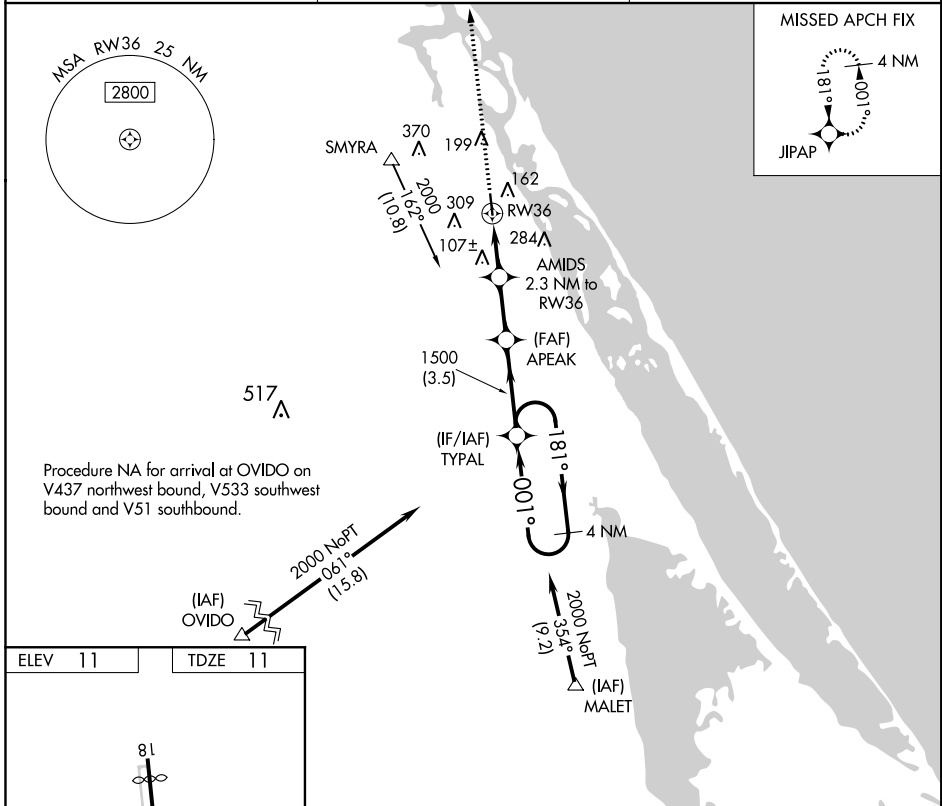
APP CRS	Rwy Idg	4160
001°	TDZE	11
	Apt Elev	11

RNAV (GPS) RWY 36

MASSEY RANCH AIRPARK (X5) (f)

V DME/DME RNP-0.3 NA. Procedure NA at night. Use Daytona Beach altimeter setting. Helicopter visibility reduction below 1 SM NA.	MISSED APPROACH: Climb to 2000 direct JIPAP and hold.
---	---

DAYTONA BEACH ASOS-3 132.875	DAYTONA APP CON 125.35 322.3	UNICOM 122.7 (CTAF)
--	--	-------------------------------

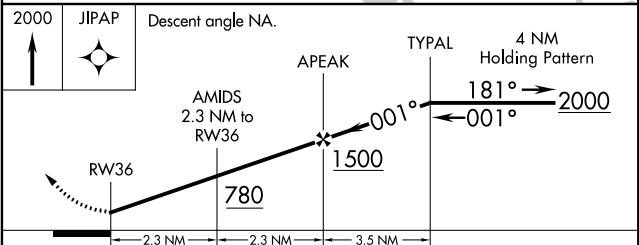
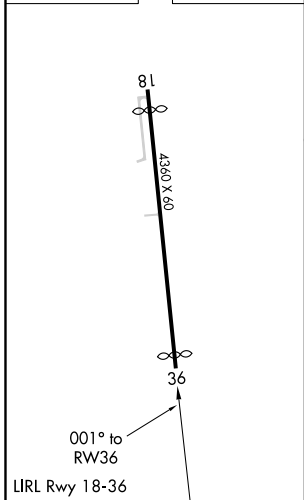


Procedure NA for arrival at OVIDO on V437 northwest bound, V533 southwest bound and V51 southbound.

SE-3, 25 APR 2019 to 23 MAY 2019

SE-3, 25 APR 2019 to 23 MAY 2019

ELEV 11	TDZE 11
---------	---------



CATEGORY	A	B	C	D
LNAV MDA	400-1	389 (400-1)	400-1 1/8 389 (400-1 1/8)	NA
C CIRCLING	500-1 489 (500-1)	660-1 649 (700-1)	720-2 709 (800-2)	NA