

WAAS CH 40325 W36A	APP CRS 358°	Rwy Idg TDZE 280 Apt Elev 282	3807
--	------------------------	---	-------------

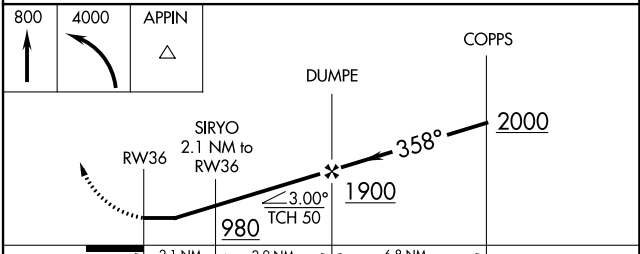
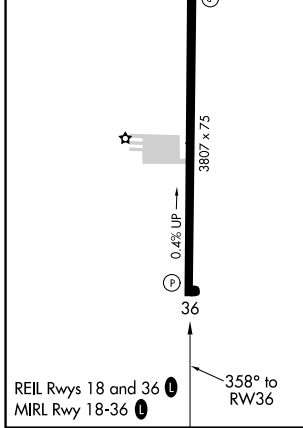
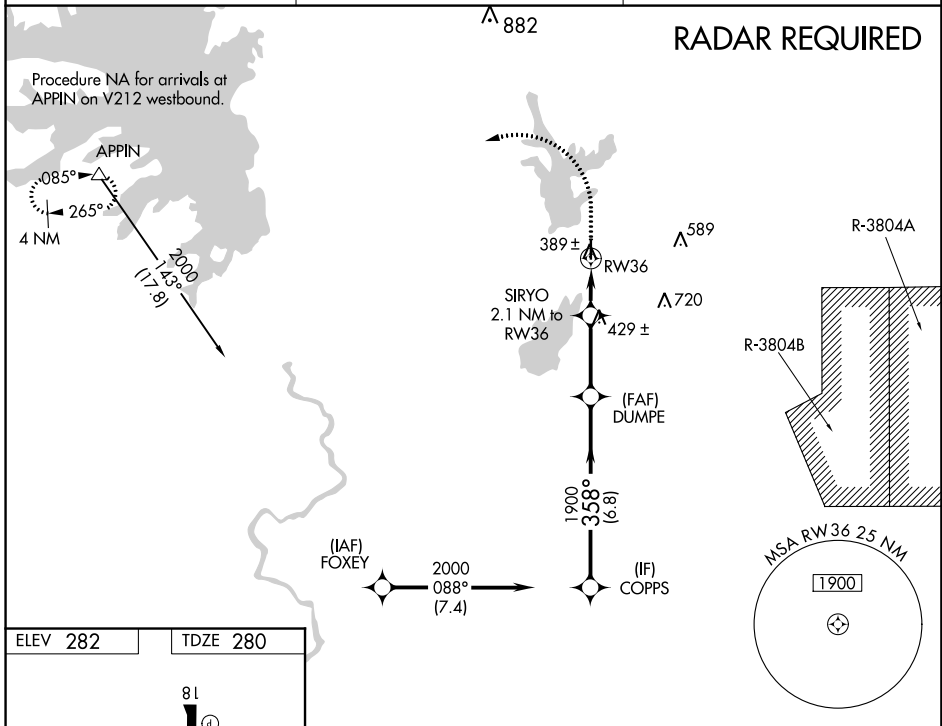
RNAV (GPS) RWY 36

LEESVILLE (L39)

NA When VGSI inop, Straight-in/Circling Rwy 36 procedure NA at night. DME/DME RNP-0.3 NA. Visibility reduction by helicopters NA. Use Fort Polk altimeter setting; when not received, use De Ridder altimeter setting and increase all MDA 40 feet and increase LP Cat C visibility to 1 3/8 mile.

MISSED APPROACH: Climb to 800 then climbing left turn to 4000 direct APPIN and hold.

POLK AAF ATIS 134.85 282.2	POLK APP CON 123.7 261.3	UNICOM 122.8 (CTAF)
--------------------------------------	------------------------------------	-------------------------------



CATEGORY	A	B	C	D
LP MDA	680-1	400 (400-1)	680-1 1/8 400 (400-1 1/8)	NA
LNAV MDA	720-1	440 (500-1)	720-1 3/8 440 (500-1 3/8)	NA
CIRCLING	760-1 478 (500-1)	800-1 518 (600-1)	800-1 1/2 518 (600-1 1/2)	NA

SC-4, 25 APR 2019 to 23 MAY 2019

SC-4, 25 APR 2019 to 23 MAY 2019