

LOC/DME I-GAO 109.1 Chan 28	APP CRS 359°	Rwy Idg 6500 TDZE -2 Apt Elev 0
--	------------------------	--

ILS or LOC RWY 36

SOUTH LAFOURCHE LEONARD MILLER JR (GAO)

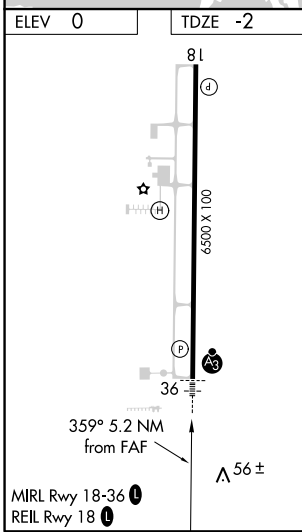
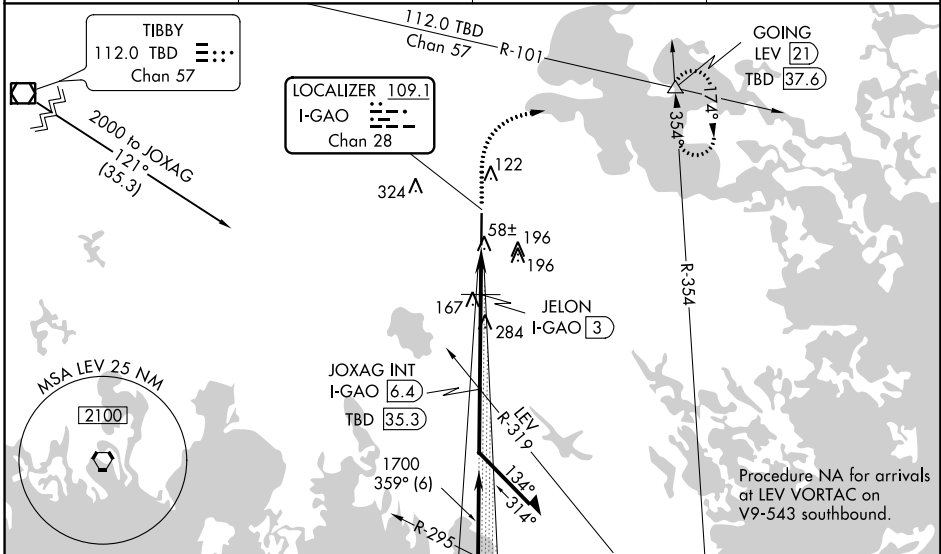
DME required.

T

SSALR

MISSED APPROACH: Climb to 2000, then climbing right turn to 2000 on heading 050° and TBD VOR/DME R-101 to GOING INT/LEV 21 DME and hold.

AWOS-3PT 118.175	NEW ORLEANS APP CON 120.85 256.9	NEW ORLEANS CLNC DEL 120.85	UNICOM 123.0 (CTAF) 0
----------------------------	--	---------------------------------------	---------------------------------



ELEV 0	TDZE -2				
1200	2000	TBD R-101	GOING	JOXAG INT I-GAO 6.4	Remain within 10 NM
*LOC only.		*I-GAO 2.1	JELON I-GAO 3	1700	2000
I-GAO 1.2		*620		1700	GS 3.00° TCH 51
0.9 NM		0.9 NM	3.4 NM		
CATEGORY	A	B	C	D	
S-ILS 36	198-1/2		200 (200-1/2)		
S-LOC 36	320-1/2		322 (400-1/2)		
CIRCLING	440-1	560-1	640-1 3/4		640-2
	440 (500-1)	560 (600-1)	640 (700-1 3/4)		640 (700-2)

SC-4, 25 APR 2019 to 23 MAY 2019

SC-4, 25 APR 2019 to 23 MAY 2019