

WAAS CH <b>69608</b> <b>W36A</b>	APP CRS <b>359°</b>	Rwy Idg <b>6500</b> TDZE <b>-2</b> Apt Elev <b>0</b>
--	------------------------	--

# RNAV (GPS) RWY 36

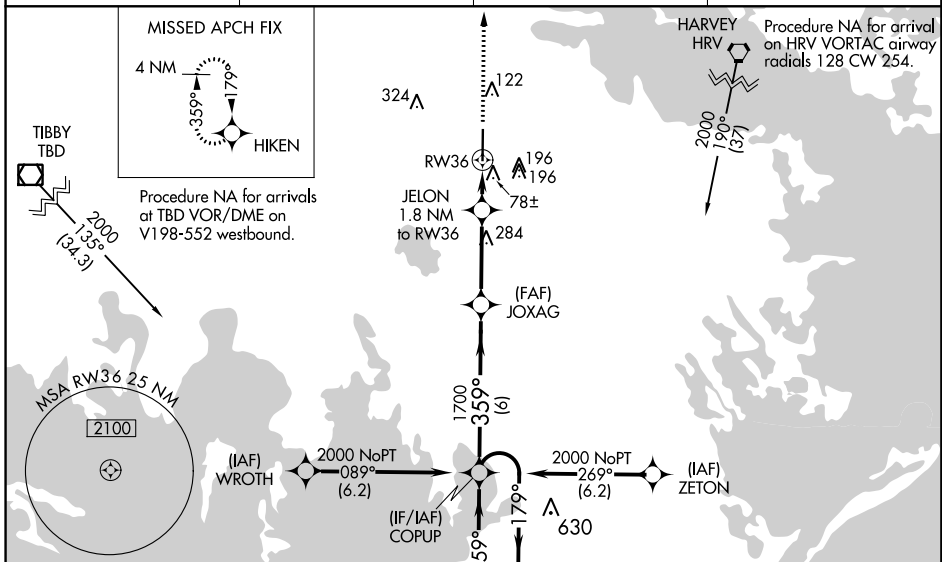
SOUTH LAFOURCHE LEONARD MILLER JR (G.A.O)

**⚠** DME/DME RNP-0.3 NA. For uncompensated Baro-VNAV systems, LNAV/VNAV NA below -15°C (5°F) or above 54°C (130°F). For inop SSALR, increase LNAV/VNAV all Cats visibility to ¾ mile and LNAV Cat C and D visibility to 1 mile. When local altimeter setting not received, use Louis Armstrong New Orleans Intl altimeter setting and increase all DA 77 feet and all MDA 80 feet and increase LNAV/VNAV all Cats visibility ½ mile, LNAV Cat C and D visibility ½ mile and Circling Cat C and D visibility ½ mile. For inop SSALR, when using Louis Armstrong New Orleans Intl altimeter setting, increase LPV and LNAV/VNAV all Cats visibility ¾ mile. Baro-VNAV and VDP NA when using Louis Armstrong New Orleans Intl altimeter setting.

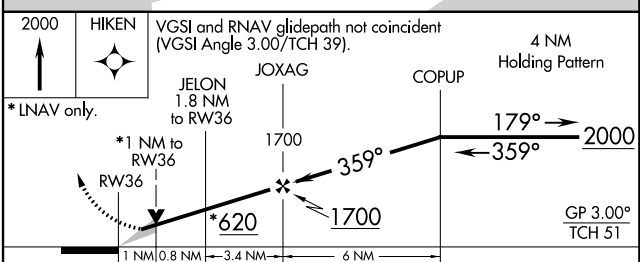
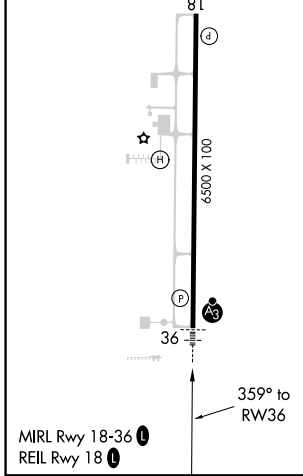
**SSALR**

**MISSED APPROACH:**  
Climb to 2000 direct HIKEN and hold.

AWOS-3PT <b>118.175</b>	NEW ORLEANS APP CON <b>120.85 256.9</b>	NEW ORLEANS CLNC DEL <b>120.85</b>	UNICOM <b>123.0 (CTAF) 0</b>
----------------------------	--	---------------------------------------	---------------------------------



ELEV <b>0</b>	TDZE <b>-2</b>
---------------	----------------



CATEGORY	A	B	C	D
LPV DA		198-½ 200 (200-½)		
LNAV/VNAV DA		248-½ 250 (300-½)		
LNAV MDA	340-½ 342 (400-½)		340-⅝ 342 (400-⅝)	
<b>C</b> CIRCLING	440-1 440 (500-1)	560-1 560 (600-1)	640-1¾ 640 (700-1¾)	640-2 640 (700-2)

SC-4, 25 APR 2019 to 23 MAY 2019

SC-4, 25 APR 2019 to 23 MAY 2019