

| | | | |
|--|------------------------|-----------------------------|---|
| WAAS CH 49214 W36A | APP CRS 357° | Rwy Idg TDZE Apt Elev | 5000 107 107 |
|--|------------------------|-----------------------------|---|

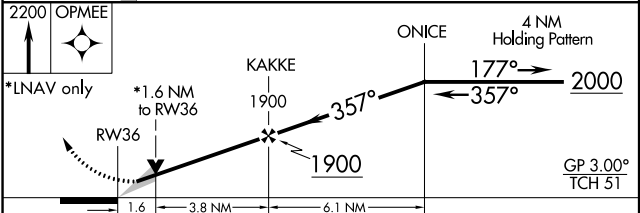
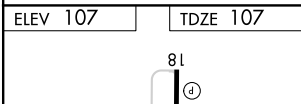
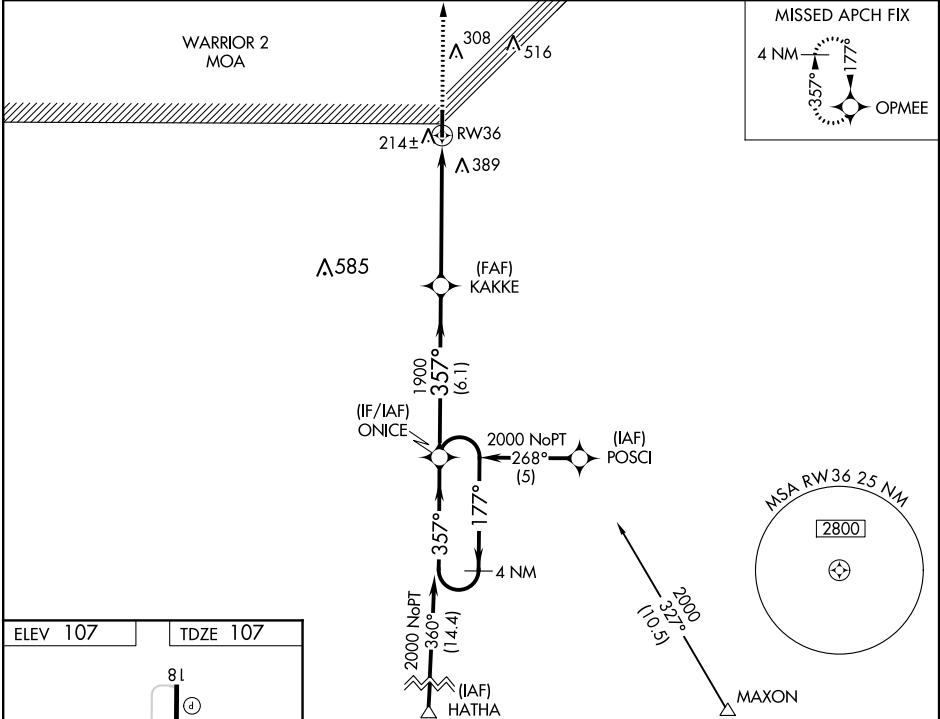
RNAV (GPS) RWY 36

ALLEN PARISH (ACP)

⚠ Baro-VNAV NA when using Alexandria Intl altimeter setting. For uncompensated Baro-VNAV systems, LNAV/VNAV NA below -15°C (5°F) or above 54°C (130°F). DME/DME RNP-0.3 NA. VDP NA when using Alexandria Intl altimeter setting. When local altimeter setting not received, use Alexandria Intl altimeter setting and increase all DA 84 feet, all MDA 100 feet. Increase LPV all Cats, LNAV Cat C and Circling Cat C visibility ¼ mile, and LNAV/VNAV all Cats visibility ½ mile.

MISSED APPROACH:
Climb to 2200 direct OPMEE and hold.

| | | |
|----------------------------|------------------------------------|-------------------------------|
| AWOS-3PT 118.275 | POLK APP CON 123.7 261.3 | UNICOM 122.8 (CTAF) |
|----------------------------|------------------------------------|-------------------------------|



| CATEGORY | A | B | C | D |
|--------------|----------------------|----------------------|------------------------|----|
| LPV DA | | 413-1 | 306 (400-1) | NA |
| LNAV/VNAV DA | | 702-2 | 595 (600-2) | NA |
| LNAV MDA | 660-1 | 553 (600-1) | 660-1½ 553 (600-1½) | NA |
| CIRCLING | 660-1 553 (600-1) | 740-1 633 (700-1) | 740-1½ 633 (700-1½) | NA |

SC-4, 25 APR 2019 to 23 MAY 2019

SC-4, 25 APR 2019 to 23 MAY 2019