

NDB ROQ <b>368</b>	APP CRS <b>177°</b>	Rwy Idg TDZE Apt Elev	<b>5000</b> <b>297</b> <b>311</b>
-----------------------	------------------------	-----------------------------	---

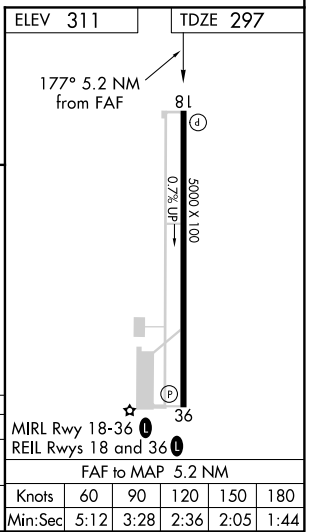
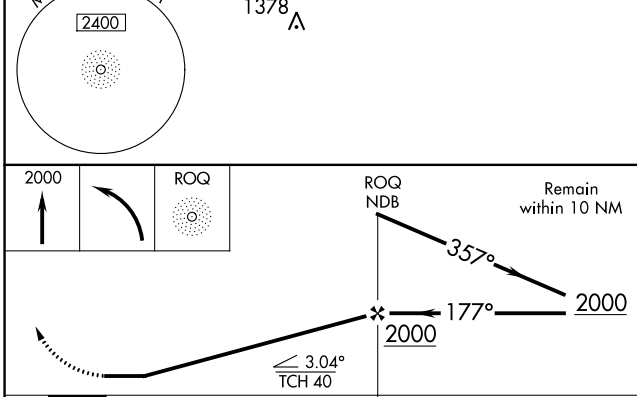
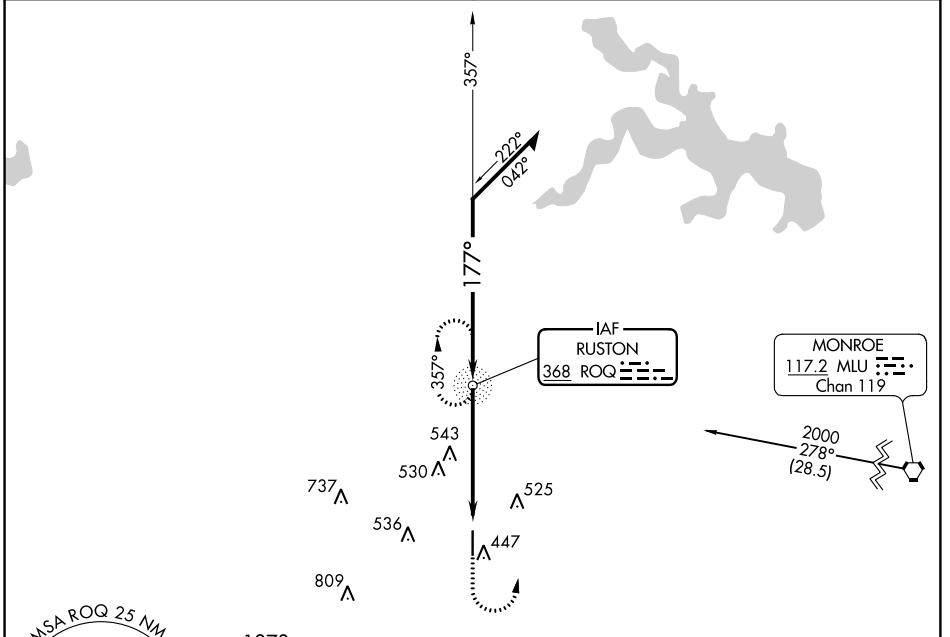
# NDB RWY 18

RUSTON RGNL (RSN)

**NA** If local altimeter setting not received on 119.525, obtain local altimeter setting on CTAF; when not received, procedure NA. Rwy 18 helicopter visibility reduction below 3/4 SM NA.

MISSED APPROACH: Climb to 2000, then left turn direct ROQ NDB and hold.

AWOS-3PT <b>119.525</b>	MONROE APP CON* <b>126.9 307.9</b>	CLNC DEL <b>118.8</b>	UNICOM <b>122.7 (CTAF)</b>
----------------------------	---------------------------------------	--------------------------	-------------------------------



CATEGORY	A		B		C		D	
S-18	900-1	603 (600-1)	900-1 3/4	603 (600-1 3/4)	900-2	603 (600-2)	900-2	603 (600-2)
CIRCLING	900-1	589 (600-1)	900-1 3/4	589 (600-1 3/4)	900-2	589 (600-2)	900-2	589 (600-2)

SC-4, 25 APR 2019 to 23 MAY 2019

SC-4, 25 APR 2019 to 23 MAY 2019