

WAAS CH 87121 W18A	APP CRS 177°	Rwy Idg TDZE 297 Apt Elev 311	5000
--	------------------------	---	-------------

RNAV (GPS) RWY 18

RUSTON RGNL (RSN)

RNP APCH.

⚠ Baro-VNAV NA when using Monroe altimeter setting. For uncompensated Baro-VNAV systems, LNAV/VNAV NA below -15°C (5°F) or above 42°C (107°F). Rwy 18 helicopter visibility reduction below ¾ SM NA. VDP NA with Monroe altimeter setting. When local altimeter setting not received, use Monroe altimeter setting and increase all DA 97 feet and all MDA 100 feet; increase LPV all Cats, LNAV/VNAV all Cats and LNAV Cat C and D visibility ¼ mile.

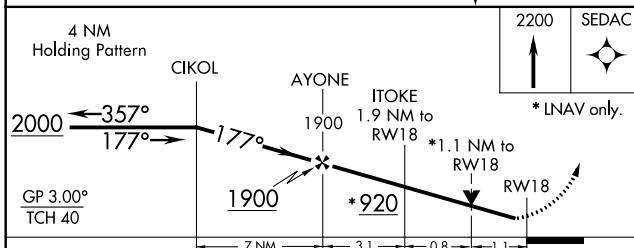
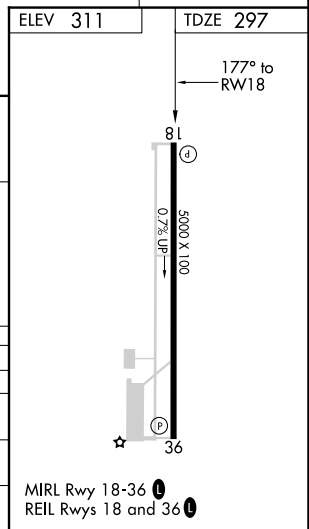
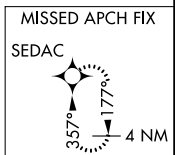
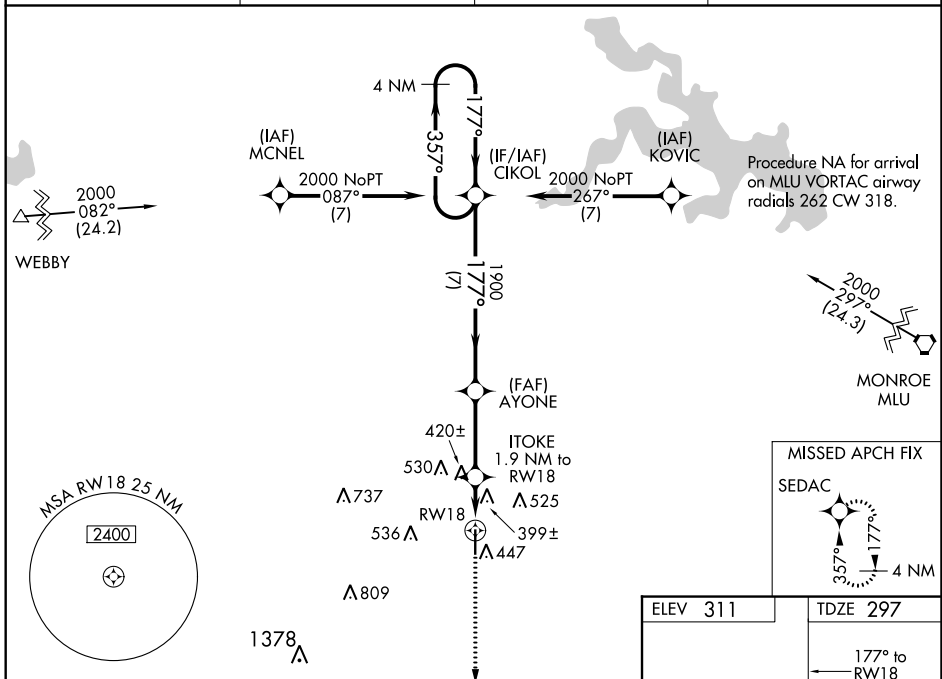
MISSED APPROACH:
Climb to 2200 direct SEDAC and hold.

AWOS-3PT
119.525

MONROE APP CON*
126.9 307.9

CLNC DEL
118.8

UNICOM
122.7 (CTAF) 0



CATEGORY	A	B	C	D
LPV DA		547-7/8	250 (300-7/8)	
LNAV/VNAV DA		723-1 1/2	426 (500-1 1/2)	
LNAV MDA	680-1	383 (400-1)	680-1 1/8	383 (400-1 1/8)
CIRCLING	760-1 449 (500-1)	780-1 469 (500-1)	780-1 1/2 469 (500-1 1/2)	880-2 569 (600-2)