

COUSHATTA, LOUISIANA

AL-10410 (FAA)

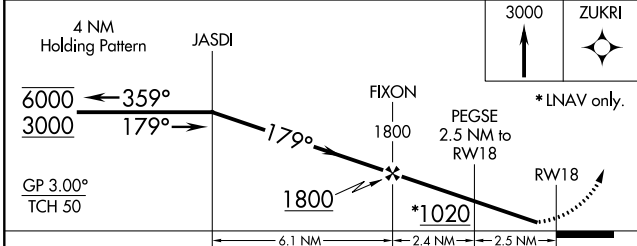
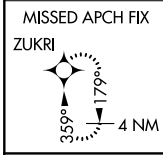
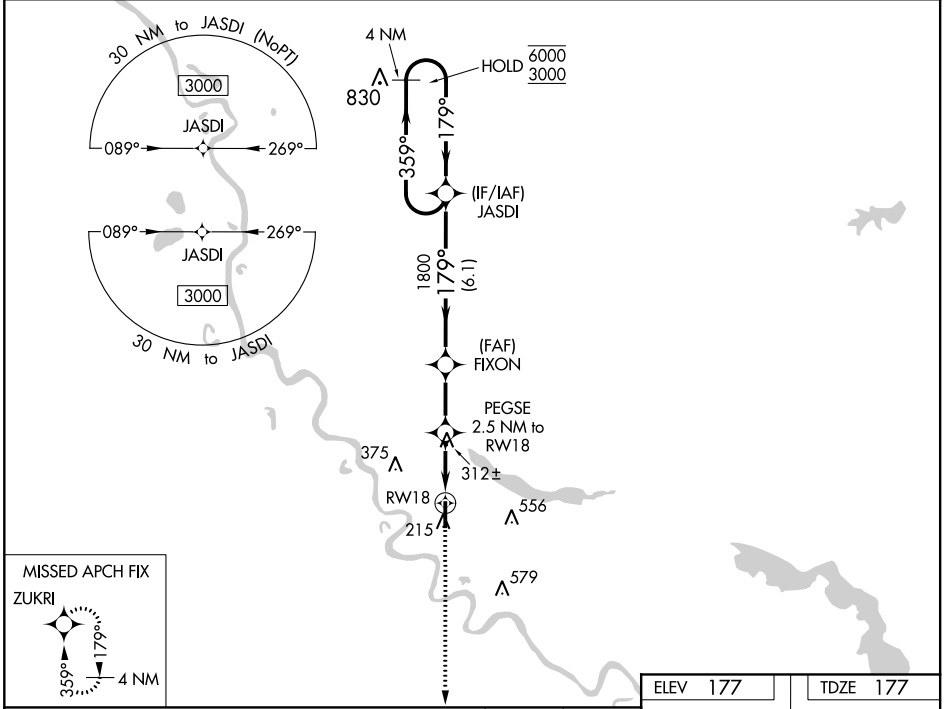
19115

WAAS CH 93842 W18A	APP CRS 179°	Rwy Idg TDZE 177 Apt Elev 177	5002
--	------------------------	---	-------------

RNAV (GPS) RWY 18

THE RED RIVER (ØR7)

RNP APCH.		MISSED APPROACH: Climb to 3000 direct ZUKRI and hold, continue climb in hold to 3000.	
<p>▼ Rwy 18 helicopter visibility reduction below ¼ SM NA. ▲ NA Baro-VNAV NA. Use Natchitoches altimeter setting.</p>			
NATCHITOCHEES RGNL AWOS-3 119.025	POLK APP CON 132.05 254.8	GCO 135.075	CTAF 122.9 0



ELEV 177	TDZE 177
179° to RWY 18	
81	74
36	36
MIRL Rwy 18-36 0 REIL Rwy 18 and 36 0	

CATEGORY	A	B	C	D
LPV DA	478-1 301 (400-1)			
LNAV/VNAV DA	632-1 3/8 455 (500-1 3/8)			
LNAV MDA	620-1	443 (500-1)	620-1 3/8	443 (500-1 3/8)
CIRCLING	660-1	483 (500-1)	920-2 1/4 743 (800-2 1/4)	940-2 1/2 763 (800-2 1/2)

COUSHATTA, LOUISIANA
Orig 25APR19

31°59'N-93°18'W

THE RED RIVER (ØR7)

RNAV (GPS) RWY 18

SC-4, 25 APR 2019 to 23 MAY 2019

SC-4, 25 APR 2019 to 23 MAY 2019