

APP CRS	Rwy Idg	<b>2004</b>
<b>241°</b>	TDZE	<b>1436</b>
	Apt Elev	<b>1436</b>

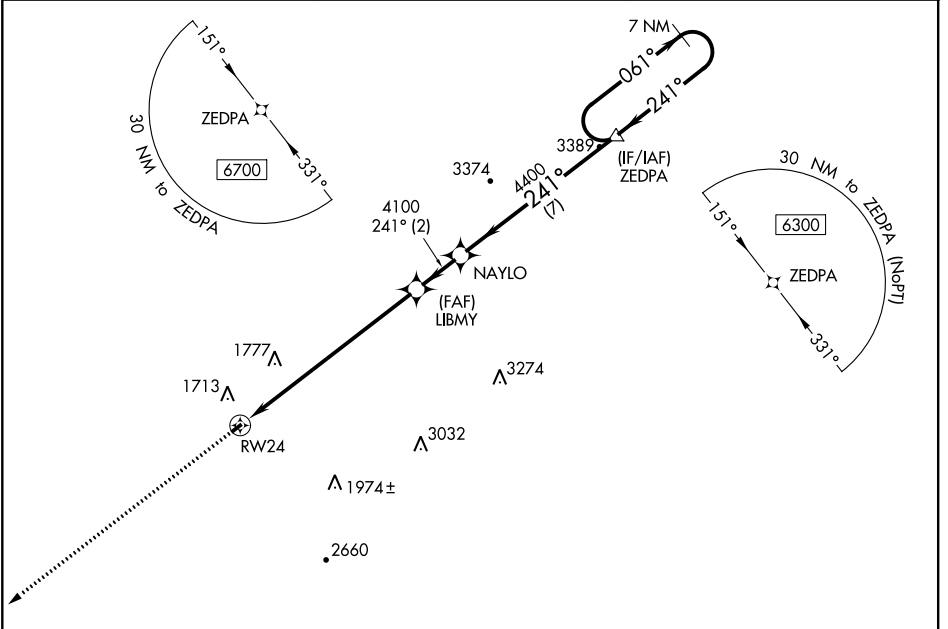
# RNAV (GPS) RWY 24

EAGLE'S NEST (W13)

**NA** DME/DME RNP-0.3 NA. When local altimeter setting not received, use Shenandoah Valley Rgnl altimeter setting and increase all MDA 60 feet. Procedure NA at night. Helicopter visibility reduction NA.

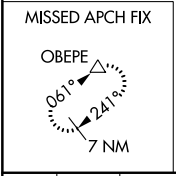
**MISSED APPROACH:** Climb to 6700 direct OBEPE and hold, continue climb-in-hold to 6700.

AWOS-3PT <b>118.625</b>	POTOMAC APP CON <b>132.85 323.125</b>	UNICOM <b>123.05 (CTAF)</b>
----------------------------	--	--------------------------------

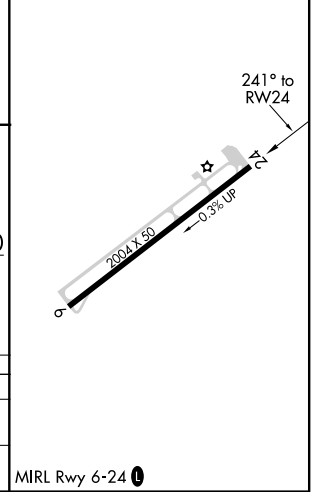
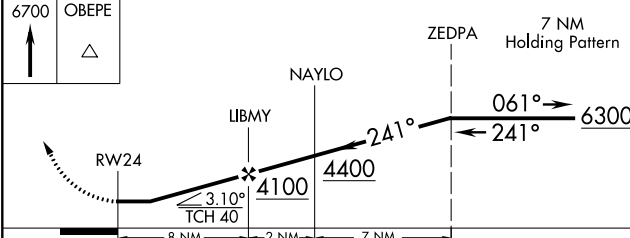


NE-3, 25 APR 2019 to 23 MAY 2019

NE-3, 25 APR 2019 to 23 MAY 2019



ELEV 1436	TDZE 1436
-----------	-----------



CATEGORY	A	B	C	D
LNNAV MDA	2640-3	1204 (1300-3)		NA
CIRCLING	2640-3	1204 (1300-3)		NA