

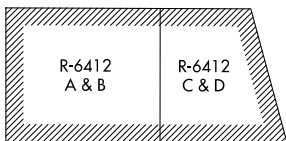
PROVO FOUR DEPARTURE (OBSTACLE)

ATIS 135.175 ★
GND CON 119.4
PROVO TOWER ★
125.3 (CTAF)
SALT LAKE CITY DEP CON
118.85 233.7

TAKEOFF MINIMUMS

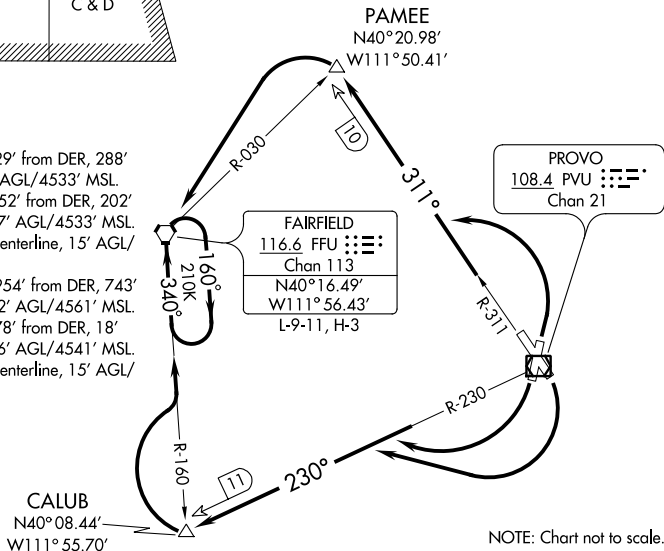
- Rwy 13: Standard with a minimum climb of 400' per NM to 9000, or 3100-3 for climb in visual conditions.
- Rwy 18: Standard with a minimum climb of 350' per NM to 9000, or 3100-3 for climb in visual conditions.
- Rwy 31: Standard with a minimum climb of 380' per NM to 9000, or 3100-3 for climb in visual conditions.
- Rwy 36: Standard with a minimum climb of 365' per NM to 9000, or 3100-3 for climb in visual conditions.

NOTE: Climb in visual conditions NA at night.



TAKEOFF OBSTACLE NOTES

- Rwy 18: Multiple trees beginning 429' from DER, 288' left of centerline, up to 57' AGL/4533' MSL. Multiple trees beginning 852' from DER, 202' right of centerline, up to 57' AGL/4533' MSL. Road 775' from DER, on centerline, 15' AGL/4518' MSL.
- Rwy 31: Multiple trees beginning 1954' from DER, 743' right of centerline, up to 72' AGL/4561' MSL.
- Rwy 36: Multiple trees beginning 978' from DER, 18' right of centerline, up to 46' AGL/4541' MSL. Road 210' from DER, on centerline, 15' AGL/4516' MSL.



SW-4, 23 MAY 2019 to 20 JUN 2019

SW-4, 23 MAY 2019 to 20 JUN 2019

DEPARTURE ROUTE DESCRIPTION

TAKEOFF RUNWAYS 13, 18: Climbing right turn to 9000 via PVU VOR/DME R-230 to CALUB INT/PVU 11 DME and a right turn via FFU VORTAC R-160 to FFU VORTAC and hold. Thence... or climb in visual conditions to cross Provo Muni Airport southwest bound at or above 7400, climb to 9000 via PVU R-230 to CALUB INT/PVU 11 DME and right turn via FFU R-160 to FFU VORTAC and hold. Thence...

TAKEOFF RUNWAY 31: Climb to 9000 via PVU VOR/DME R-311 to PAMEE INT/PVU 10 DME and left turn direct FFU VORTAC and hold. Thence... or climb in visual conditions to cross Provo Muni Airport northwest bound at or above 7400, climb to 9000 via PVU R-311 to PAMEE INT/PVU 10 DME and left turn direct FFU VORTAC and hold. Thence...

TAKEOFF RUNWAY 36: Climbing left turn to 9000 via PVU VOR/DME R-311 to PAMEE INT/PVU 10 DME and left turn direct FFU VORTAC and hold. Thence... or climb in visual conditions to cross Provo Muni Airport northwest bound at or above 7400, climb to 9000 via PVU R-311 to PAMEE INT/PVU 10 DME, and left turn direct FFU VORTAC and hold. Thence...

...Expect clearance for filed route and altitude within 10 minutes after departure.

PROVO FOUR DEPARTURE (OBSTACLE)