

WAAS CH <b>97307</b> <b>W13A</b>	APP CRS <b>134°</b>	Rwy Idg <b>8599</b> TDZE <b>4497</b> Apt Elev <b>4497</b>
--	------------------------	---

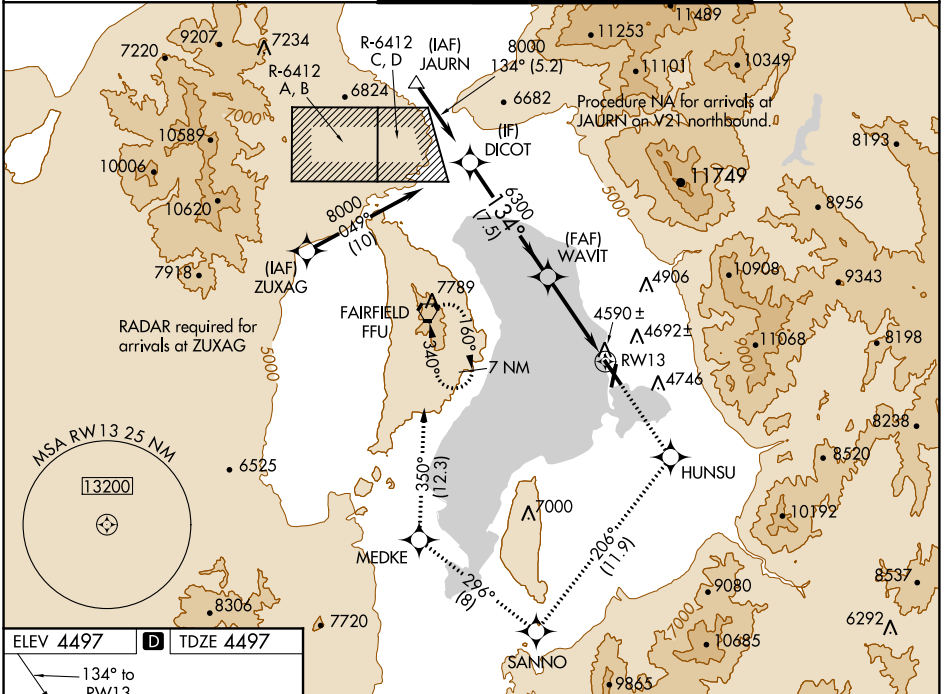
# RNAV (GPS) RWY 13

PROVO MUNI (PVU)

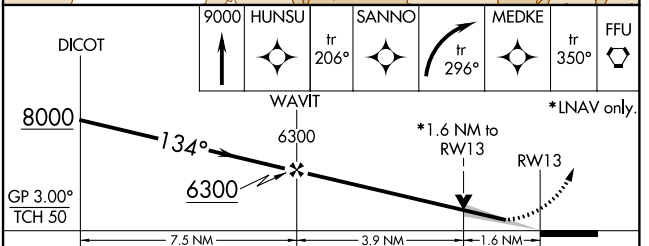
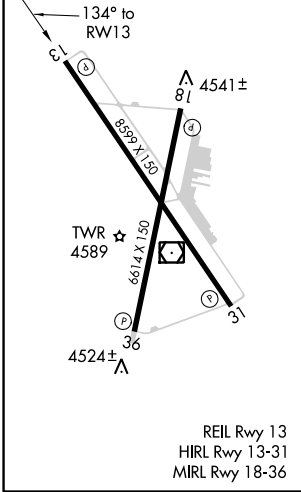
▼ For uncompensated Baro-VNAV systems, LNAV/VNAV NA below -23°C (-9°F) or above 40°C (104°F).  
DME/DME RNP-0.3 NA.  
Circling NA east of Rwys 18 and 31.

MISSED APPROACH: Climb to 9000 direct HUNSU and on track 206° to SANNNO and right turn on track 296° to MEDKE and on track 350° to FFU VORTAC and hold.

ATIS ★ <b>135.175</b>	SALT LAKE CITY APP CON <b>118.85 233.7</b>	PROVO TOWER ★ <b>125.3 (CTAF)</b>	GND CON <b>119.4</b>
--------------------------	---	--------------------------------------	-------------------------



ELEV 4497	<b>D</b>	TDZE 4497
-----------	----------	-----------



CATEGORY	A	B	C	D
LPV DA		4697- <sup>3</sup> / <sub>4</sub>	200 (200- <sup>3</sup> / <sub>4</sub> )	
LNAV/VNAV DA		4940-1 <sup>1</sup> / <sub>2</sub>	443 (500-1 <sup>1</sup> / <sub>2</sub> )	
LNAV MDA	5040-1	543 (600-1)	5040-1 <sup>5</sup> / <sub>8</sub>	543 (600-1 <sup>5</sup> / <sub>8</sub> )
CIRCLING	5040-1	543 (600-1)	5040-1 <sup>5</sup> / <sub>8</sub> 543 (600-1 <sup>5</sup> / <sub>8</sub> )	5060-2 563 (600-2)

SW-4, 23 MAY 2019 to 20 JUN 2019

SW-4, 23 MAY 2019 to 20 JUN 2019