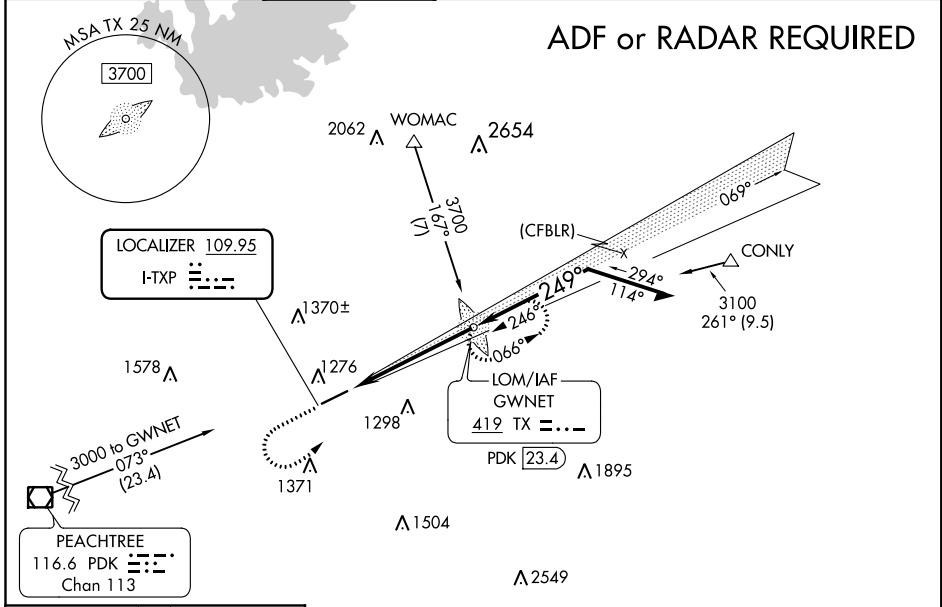


LOC I-TXP 109.95	APP CRS 249°	Rwy Idg TDZE Apt Elev	6000 1038 1062
----------------------------	------------------------	-----------------------------	-------------------------------------------

ILS or LOC RWY 25
GWINNETT COUNTY-BRISCOE FIELD (LZU)

<p>▼ NA</p> <p>When local alimeter setting not received, use Winder alimeter setting and increase all DA 51 feet, and all MDA 60 feet, increase S-LOC 25 Cat C/D and Circling Cat C/D visibility ½ SM. ADF required. For inop MALSR, when using Winder alimeter setting increase S-ILS 25 all Cats visibility to ¾ SM.</p>	<p>MALSR</p>	<p>MISSED APPROACH: Climb to 1800 then climbing left turn to 3000 direct GWNET LOM and hold.</p>
	<p>ATIS 132.275 ATLANTA APP CON 126.975 239.275 GWINNETT TOWER * 124.1 (CTAF) 121.8 GND CON 121.8 CLNC DEL 121.8 ATLANTA CLNC DEL 134.0 (When tower closed) UNICOM 123.05</p>	

ATIS	ATLANTA APP CON	GWINNETT TOWER *	GND CON	CLNC DEL	ATLANTA CLNC DEL	UNICOM
132.275	126.975 239.275	124.1 (CTAF) 121.8	121.8	121.8	134.0 (When tower closed)	123.05



ELEV 1062	TDZE 1038
-----------	-----------

249° 5.1 NM from FAF

6000 x 100 0.5% UP

1251

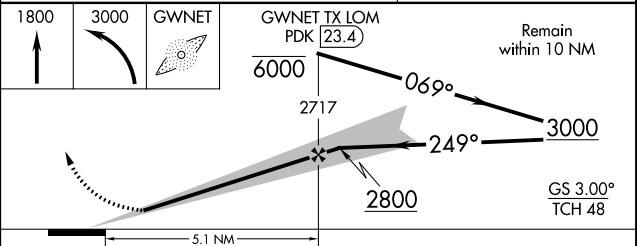
HIRL Rwy 7-25

FAF to MAP 5.1 NM

Knots	60	90	120	150	180
Min:Sec	5:06	3:24	2:33	2:02	1:42

ALTERNATIVE MISSED APCH FIX

GWNET 419 TX PDK 23.4



CATEGORY	A	B	C	D
S-ILS 25		1238-½	200 (200-½)	
S-LOC 25	1540-½	502 (500-½)	1540-1	502 (500-1)
CIRCLING	1640-1	578 (600-1)	1640-1½	1700-2 638 (700-2)

SE-4, 23 MAY 2019 to 20 JUN 2019

SE-4, 23 MAY 2019 to 20 JUN 2019