

VOR/DME PDK 116.6 Chan 113	APP CRS 075°	Rwy Idg TDZE 1061 Apt Elev 1062	6000
--	------------------------	---	-------------

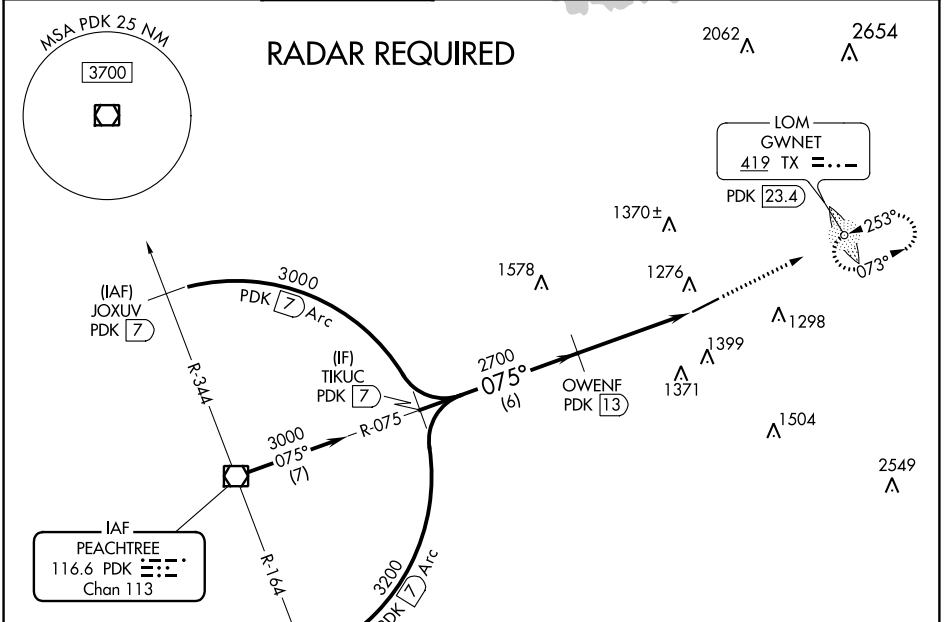
VOR RWY 7

GWINNETT COUNTY-BRISCOE FIELD (LZU)

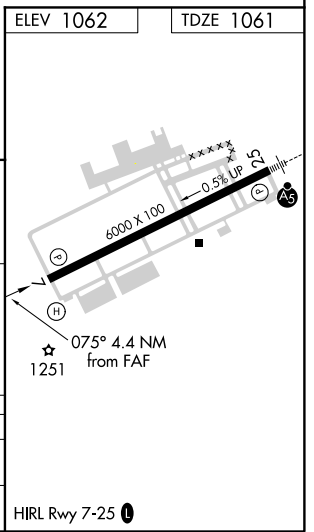
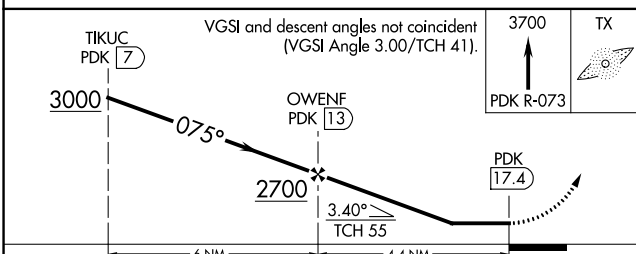
⚠ Rwy 7 helicopter visibility reduction below 3/4 SM NA. When local altimeter setting not received, use Winder altimeter setting and increase all MDA 60 feet. Increase S-7 and Circling Cat C visibility 1/8 mile, and Circling Cat D 1/4 mile. DME required.

MISSSED APPROACH: Climb to 3700 on PDK VOR/DME R-073 to GWNET/PDK 23.4 DME and hold, continue climb-in-hold to 3700.

ATIS 132.275	ATLANTA APP CON 126.975 239.275	GWINNETT TOWER ★ 124.1 (CTAF) 0	GND CON 121.8	CLNC DEL 121.8	ATLANTA CLNC DEL 134.0 (When tower closed)	UNICOM 123.05
------------------------	---	---	-------------------------	--------------------------	---	-------------------------



ELEV 1062	TDZE 1061
-----------	-----------



CATEGORY	A	B	C	D
S-7	1660-1	599 (600-1)	1660-1 3/4	599 (600-1 3/4)
CIRCLING	1660-1	598 (600-1)	1660-1 3/4 598 (600-1 3/4)	1700-2 638 (700-2)

VOR RWY 7

SE-4, 23 MAY 2019 to 20 JUN 2019

SE-4, 23 MAY 2019 to 20 JUN 2019