

NEW BEDFORD RGNL (EWB)(KEWB) 2 NW UTC-5(-4DT) N41°40.59' W70°57.47'

NEW YORK

79 B LRA Class I, ARFF Index A NOTAM FILE EWB

H-101, 11D, 12K, L-33D

RWY 05-23: H5400X150 (ASPH-GRVD) S-30, D-108, 2S-137,
2D-195 HIRL 0.3% up NE

RWY 05: MALSR. RVR-T Tree.**RWY 23:** MALSR. PAPI(P4L)—GA 3.0° TCH 46'. RVR-R Thld dsplcd 400'. Tree.**RWY 14-32:** H5000X75 (ASPH) S-33, D-48, 2D-95 MIRL**RWY 14:** PAPI(P4L)—GA 3.42° TCH 50'. Tree.**RWY 32:** REIL. PAPI(P4L)—GA 3.5° TCH 50'. Trees.

SERVICE: S4 FUEL 100LL, JET A OX 3, 4 LGT When twr clsd
ACTIVATE MALSR Rwys 05 and Rwy 23, REIL Rwy 32, HIRL Rwy
05-23, MIRL Rwy 14-32—CTAF. PAPI Rwy 14, Rwy 23 and Rwy 32
ops 24 hrs.

AIRPORT REMARKS: Attended 1100-0400Z†. Birds and wildlife on and in/ov
arpt. Ldg fees for acft over 5,500 lbs. Flight Notification Service
(ADCUS) available.

AIRPORT MANAGER: (508) 991-6161**WEATHER DATA SOURCES:** ASOS 126.85 (508) 992-0195. LAWRS.**COMMUNICATIONS:** CTAF 118.1 ATIS 126.85 (508) 994-6277 **UNICOM**
122.95

Ⓡ **PROVIDENCE APP/DEP CON** 128.7 (Sun-Fri 1030-0530Z†, Sat
1030-0500Z†) other times ctc

BOSTON CENTER APP/DEP CON 124.85**TOWER** 118.1 (1130-0300Z†) **GND CON** 121.9**CLEARANCE DELIVERY PHONE:** For CD when Apch clsd ctc Boston ARTCC at 603-879-6859.**AIRSPACE:** CLASS D svc 1130-0300Z†; other times CLASS G.**RADIO AIDS TO NAVIGATION:** NOTAM FILE PVD.

PROVIDENCE (H) VOR/DME 115.6 PVD Chan 103 N41°43.46' W71°25.78' 112° 21.4 NM to fld. 49/14W.
HIWAS.

VOR portion unusable:

085°-105° byd 12 NM blo 5,500'

085°-105° byd 8 NM blo 3,000'

106°-294° byd 30 blo 3,000'

295°-330° byd 30 blo 6,000'

331°-084° byd 30 blo 3,000'

DME portion unusable:

085°-105° byd 12 NM blo 5,500'

085°-105° byd 8 NM blo 3,000'

106°-152° byd 11 NM blo 2,000'

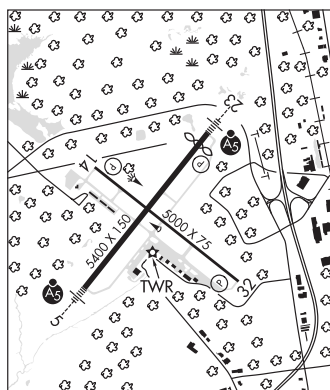
106°-152° byd 20 NM blo 4,000'

153°-294° byd 30 NM blo 3,000'

295°-330° byd 30 blo 6,000'

331°-084° byd 30 blo 3,000'

ILS/DME 109.7 I-EWB Chan 34 Rwy 05. Unmonitored when ATCT clsd. Autopilot coupled approached blo 470'
na. Localizer backcourse and backcourse DME unusable byd 12 NM. Localizer backcourse and backcourse DME
unusable 15° left and right of course.

**NEWBURYPORT****PLUM ISLAND** (2B2) 1 SE UTC-5(-4DT) N42°47.72' W70°50.37'

NEW YORK

11 NOTAM FILE BDR

RWY 14-32: 2300X100 (TURF)**RWY 14:** Trees.**RWY 32:** Trees.**RWY 10-28:** H2105X50 (ASPH) S-8**RWY 10:** Trees.**RWY 28:** Thld dsplcd 300'. Fence.**SERVICE:** S4 FUEL 100LL

AIRPORT REMARKS: Attended Apr-Sep 1300-2300Z†. Attended irregularly Oct-Mar. Wildlife in/ov arpt. No touch and go
allowed.

AIRPORT MANAGER: 978-463-4222**COMMUNICATIONS:** CTAF/UNICOM 123.0

Ⓡ **BOSTON APP/DEP CON** 124.4

CLEARANCE DELIVERY PHONE: For CD ctc Boston Apch at 603-594-5551.