

SARATOGA SPRINGS

SARATOGA CO (5B2) 3 SW UTC-5(-4DT) N43°03.04' W73°51.70'

NEW YORK

434 B TPA—1201(767) LRA NOTAM FILE 5B2

L-32G

RWY 05-23: H4699X100 (ASPH-CONC-GRVD) S-30 MIRL

IAP

RWY 05: REIL. PAPI(P2L)—GA 3.55° TCH 49'. Trees.

RWY 23: REIL. PAPI(P2L)—GA 3.0° TCH 43'. Trees.

RWY 14-32: H4000X100 (ASPH-CONC) S-30 MIRL

RWY 14: Trees.

RWY 32: REIL. PAPI(P2L)—GA 5.4° TCH 48'. Trees.

SERVICE: S4 FUEL 100LL, JET A OX 4 LGT Rwy 14-32 rwy lgts OTS.

Rwy 05 right REIL OTS. ACTIVATE MIRL Rwy 05-23 and Rwy 14-32, REIL Rwy 05 and Rwy 23 and Rwy 32—CTAF.

AIRPORT REMARKS: Attended 1230Z±-dusk. Albany ANG helicopters do touch and go ldg ops usually during dalgt hrs. Glider activity on weekends and occasionally weekdays with extensive pre-launch and after ldg ground ops on shoulders of rwy in use. Year round federally and state protected habitat for Karner Blue Butterfly, unauthorized off-pavement ops prohibited. VASI clearance plane obstruction exists on Rwy 32 due to tree height.

AIRPORT MANAGER: 518-885-5470

WEATHER DATA SOURCES: AWOS-3 132.025 (518) 884-9289.

COMMUNICATIONS: CTAF/UNICOM 123.075

Ⓡ ALBANY APP/DEP CON 118.05

GCO 118.125 (ALBANY CLNC DEL)

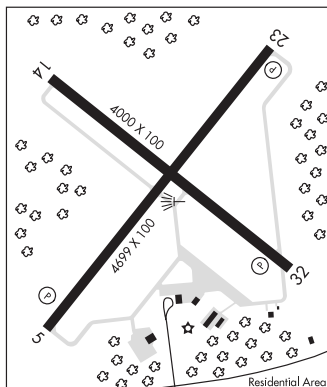
RADIO AIDS TO NAVIGATION: NOTAM FILE BTV.

CAMBRIDGE (L) VOR/DME 115.0 CAM Chan 97 N42°59.66' W73°20.64' 293° 23.0 NM to fld. 1490/14W.

HIWAS.

DME portion unusable:

040°-130° blo 9,000'



SCHENECTADY CO (SCH)(KSCH) P (ANG) 3 N UTC-5(-4DT) N42°51.15' W73°55.74'

NEW YORK

378 B LRA NOTAM FILE SCH

H-11C, 12K, L-32G

RWY 04-22: H7001X150 (ASPH-GRVD) S-95, D-175, 2D-348,

2D/2D2-850 HIRL 0.9% up NE

IAP, AD

RWY 04: MALSR. PAPI(P2L)—GA 3.0° TCH 55'. Trees.

RWY 22: PAPI(P2L)—GA 3.0° TCH 50'. Trees.

RWY 10-28: H4850X150 (ASPH-GRVD) S-55, D-134, 2S-170,

2D-218, 2D/D1-430, 2D/2D2-541, C5-559 MIRL

RWY 10: PAPI(P2L)—GA 4.0° TCH 50'. Thld dsplcd 200'. Tree.

RWY 28: REIL. PAPI(P2L)—GA 3.0° TCH 50'.

SERVICE: S6 FUEL 100LL, JET A OX 2 LGT REIL Rwy 28 OTS indef.

When twr clsd, ACTIVATE MALSR Rwy 04, HIRL Rwy 04-22 and

MIRL Rwy 10-28—CTAF (121.3). **MILITARY—JASU** (A/M32A-86)

(MA-1A) (AM32-95) FUEL A++(Mil) (NC-100LL, A) FLUID SP(Mil)

LOX(Mil) OIL O-148-156(Mil).

AIRPORT REMARKS: Attended 1230-0330Z±. 60' dropoff 150' from Rwy 28 end. Birds on and invof arpt. Noise abatement procedure in effect for large acft remaining in pattern ctc airfield manager for details. No ultra-light opr in Class D airspace without apvl from ATCT. Military C130 pattern opr conducted daily. No fld or braking action reports avbl between 0330Z± and 1230Z± daily. Ldg fee for itinerant multi-engine acft requesting twr svc 0330-1200Z±. Flight Notification Service (ADCUS) avbl.

AIRPORT MANAGER: (518) 399-0111

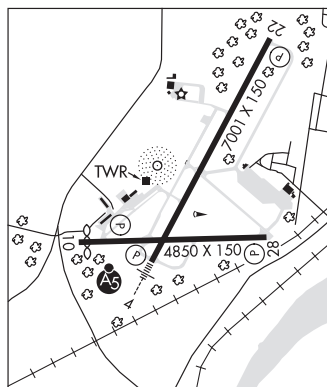
WEATHER DATA SOURCES: AWOS-3 119.275 (518) 399-6586.

COMMUNICATIONS: CTAF 121.3 UNICOM 122.95

Ⓡ ALBANY APP/DEP CON 118.05

TOWER 121.3 (1230-0330Z±) GND CON 121.9

CLEARANCE DELIVERY PHONE: For CD ctc Albany Apch at 518-862-2299.



CONTINUED ON NEXT PAGE

CONTINUED FROM PRECEDING PAGE

AIRSPACE: CLASS D svc 1230-0330Z; other times CLASS G.

RADIO AIDS TO NAVIGATION: NOTAM FILE ALB.

ALBANY (L) VORTAC 115.3 ALB Chan 100 N42°44.84' W73°48.19' 332° 8.4 NM to fld. 272/13W.

VOR unusable:

020°-059° byd 13 NM blo 6,000'
 060°-080°
 100°-135° byd 8 NM blo 10,000'
 120°-135° byd 37 NM blo 14,500'
 136°-175° byd 8 NM blo 6,000'
 176°-193° byd 17 NM blo 8,000'
 176°-193° byd 25 NM blo 12,000'
 194°-221° blo 6,000'
 194°-221° byd 28 NM blo 8,000'
 222°-250° byd 18 NM blo 15,000'
 310°-320° byd 30 NM blo 5,000'
 330°-019° blo 3,000'
 330°-019° byd 10 NM blo 6,000'
 330°-019° byd 19 NM blo 9,000'
 330°-019° byd 28 NM blo 10,000'

TACAN AZIMUTH unusable:

030°-055° byd 10 NM
 155°-195° byd 28 NM blo 5,500'
 255°-340° byd 28 NM

DME unusable:

030°-055° byd 10 NM
 155°-195° byd 28 NM blo 5,500'
 255°-340° byd 28 NM

HUNTER NDB (MHW) 356 HEU N42°51.25' W73°56.01' at fld. 333/14W. NOTAM FILE SCH.

ILS 109.7 I-SCH Rwy 04. Class IB. Glideslope unmonitored when twr clsd.

COMM/NAV/WEATHER REMARKS: UNICOM use 122.95 for svc from FBO.

SCHROON LAKE (4B7) 2 N UTC-5(-4DT) N43°51.75' W73°44.43'

NEW YORK

834 NOTAM FILE BTV

L-32G

RWY 16-34: H3000X60 (ASPH) S-13

RWY 16: Thld dsplcd 100'. Road.

RWY 34: Trees.

AIRPORT REMARKS: Attended dalgt hrs. Debris from adjacent land fill is occasionally blown onto and across rwy. 25' dropoff 30' from Rwy 34 end. Recommend ldg Rwy 16, tkf Rwy 34.

AIRPORT MANAGER: 518-532-7737

COMMUNICATIONS: CTAF 122.9

CLEARANCE DELIVERY PHONE: For CD ctc Boston ARTCC at 603-879-6859.

RADIO AIDS TO NAVIGATION: NOTAM FILE GFL.

GLENS FALLS (L) VORTAC 110.2 GFL Chan 39 N43°20.50' W73°36.71' 004° 31.7 NM to fld. 324/14W.

DME unusable:

Blo 9,000'

VOR unusable:

002°-009° blo 11,000'
 010°-020° byd 20 NM blo 6,000'
 010°-020° byd 30 NM
 021°-090° blo 10,000'
 091°-159° blo 7,000'
 160°-170° byd 30 NM
 171°-198° blo 7,000'
 199°-203° blo 10,000'
 204°-269° blo 7,000'
 270°-299° blo 10,000'
 300°-001° blo 10,000'

TACAN AZIMUTH unusable:

Blo 9,000'