

BLOOMSBURG MUNI (N13) 0 E UTC-5(-4DT) N40°59.86' W76°26.11'

NEW YORK
L-30J
IAP

481 B NOTAM FILE IPT

RWY 09-27: H3200X60 (ASPH) S-12.5 MIRL

RWY 09: Road.

SERVICE: S4 **FUEL** 100LL **LGT** ACTIVATE MIRL Rwy 09-27—CTAF.

AIRPORT REMARKS: Attended Mon-Fri 1330-2130Z†, Sat-Sun irregularly.

For svc after hrs call 570-317-1966. Deer and geese invof rwy.

AIRPORT MANAGER: (570) 317-2481

COMMUNICATIONS: CTAF/UNICOM 122.8

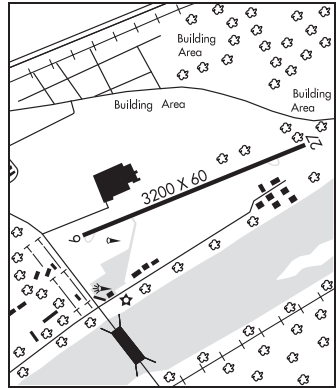
Ⓜ **WILKES-BARRE APP/DEP CON** 126.3

CLEARANCE DELIVERY PHONE: For CD ctc Wilkes-Barre Apch at 570-655-2084.

RADIO AIDS TO NAVIGATION: NOTAM FILE IPT.

MILTON (L) VORTACW 109.2 MIP Chan 29 N41°01.40'

W76°39.92' 107° 10.6 NM to fld. 1000/9W.



BLUE KNOB VALLEY (See NEWRY on page 298)

BRADEN AIRPARK (See EASTON on page 277)

BRADFORD CO (See TOWANDA on page 318)

BRADFORD RGNL (BFD)(KBFD) 10 S UTC-5(-4DT) N41°48.18' W78°38.40'

DETROIT
H-10H, 12J, L-30I
IAP

2143 B ARFF Index—See Remarks NOTAM FILE BFD

RWY 14-32: H6307X150 (ASPH-GRVD) S-48, D-60, 2D-92 HIRL

RWY 14: REIL. VASI(V4L)—GA 3.0° TCH 42'. Trees.

RWY 32: MALSR. Trees.

RWY 05-23: H4499X100 (ASPH-GRVD) S-48, D-60 MIRL

0.3% up NE

RWY 05: REIL. Trees.

RWY 23: REIL. PAPI(P4L)—GA 3.0° TCH 40'.

RUNWAY DECLARED DISTANCE INFORMATION

RWY 05: TORA-4499 TODA-4499 ASDA-4499 LDA-4499

RWY 14: TORA-6306 TODA-6306 ASDA-6306 LDA-6306

RWY 23: TORA-4499 TODA-4499 ASDA-4499 LDA-4499

RWY 32: TORA-6306 TODA-6306 ASDA-6306 LDA-6306

SERVICE: S2 **FUEL** 100LL, JET A+ **LGT** ACTIVATE MALSR Rwy 32; REIL

Rwy 05, Rwy 23 and Rwy 14; VASI Rwy 14; PAPI Rwy 23; MIRL Rwy

05-23; HIRL Rwy 14-32; twy lgts—CTAF.

AIRPORT REMARKS: Attended 1200-0100Z†. Class I, ARFF Index A. PPR 24

hrs for unscheduled acft ops with more than 30 pax seats, call arpt mgr

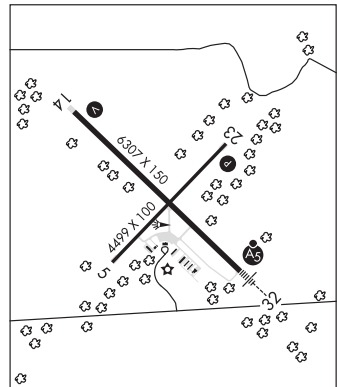
814-368-5928 x 10. Index B coverage avbl 1200-0100Z†, after

0100Z† for emerg call McKean County 911 at 814-887-4911. Deer

and birds on and invof arpt. No snow removal avbl 1200-0100Z†. Acft

deicing avbl. Ldg fee.

AIRPORT MANAGER: 814-368-5928



CONTINUED ON NEXT PAGE

CONTINUED FROM PRECEDING PAGE

WEATHER DATA SOURCES: ASOS 133.825 (814) 368-2581.

COMMUNICATIONS: CTAF/UNICOM 123.075

RCO 122.1R 116.6T (ALTOONA RADIO)

RCO 122.2 (ALTOONA RADIO)

④ CLEVELAND CENTER APP/DEP CON 124.325 or ctc Cleveland ARTCC at 440-774-0227.

AIRSPACE: CLASS E svc 1100-0330Z† Mon-Fri, 1100-2330Z† Sat, 1300-0330Z† Sun; other times CLASS G.

RADIO AIDS TO NAVIGATION: NOTAM FILE BFD.

(L) VOR/DME 116.6 BFD Chan 113 N41°47.18' W78°37.16' 324° 1.4 NM to fld. 2110/7W.

VOR portion unusable:

145°-156° byd 10 NM

156°-262°

341°-049°

ILS 108.3 I-BFD Rwy 32. Class IB.

BRANDYWINE RGNL (See WEST CHESTER on page 321)

BREEZEWOOD

GREATER BREEZEWOOD RGNL (P17) 7 S UTC-5(-4DT) N39°52.46' W78°17.86'

CINCINNATI

1345 NOTAM FILE AOO

RWY 01-19: 3073X100 (TURF) 2.1% up N

RWY 01: Tree. Rgt tfc.

RWY 19: Pole.

AIRPORT REMARKS: Unattended. Deer and wildlife on and invof arpt. Rwy marked with white plastic barrels.

AIRPORT MANAGER: 814-327-8287

COMMUNICATIONS: CTAF 122.9 (Opr Hrs 1100-0100Z†).

BROGUE

BAUBLITZ COMMERCIAL (9W8) 1 S UTC-5(-4DT) N39°51.14' W76°29.18'

WASHINGTON

750 B NOTAM FILE IPT

RWY 10-28: 2493X100 (TURF)

RWY 10: Thld dsplcd 476'. Pole.

RWY 28: Thld dsplcd 200'. Road.

SERVICE: S2 FUEL 100LL

AIRPORT REMARKS: Attended dalgt hrs. No winter snow removal. Rwy 10-28 edges marked by white flush painted markers.

Rwy 10-28 edges and rwy ends marked by white flush painted markers co-located with orange cones. Rwy 10 dsplcd thld marked by 3 white flush markers each side of rwy. Rwy 28 dsplcd thld marked by 3 white flush markers each side of rwy. Rwy 28 at west end last 400' slopes downward 16'.

AIRPORT MANAGER: (717) 870-4076

COMMUNICATIONS: CTAF 122.9

CLEARANCE DELIVERY PHONE: For CD ctc Potomac Apch at 866-429-5882.

BROKENSTRAW (See PITTSFIELD on page 306)

BUTLER

BUTLER FARM SHOW (3G9) 3 W UTC-5(-4DT) N40°51.15' W79°58.49'

DETROIT

1333 B NOTAM FILE AOO

RWY 18-36: H2580X38 (ASPH) S-9 LIRL(NSTD)

RWY 18: Thld dsplcd 180'. Pole.

RWY 36: Thld dsplcd 197'. Trees.

SERVICE: FUEL 100LL LGT ACTIVATE LIRL—CTAF. Arpt bcn ops dusk-1000Z†. Rwy 18-36 NSTD LIRL 50' from rwy. Lgtl wind "T" dusk to dawn.

AIRPORT REMARKS: Attended irregularly. Pre-coordinate fuel svc. Rwy 18-36 CLOSED to touch and go ldg. Dsplcd rwy ends avbl for take off and roll out. Ultralight ops prohibited. Deer and bird activity on and invof rwy. Rwy 18-36 single wheel capacity 9000 lbs. + 22' marked p-line 292' from Rwy 18 thld on extdd centerline.

AIRPORT MANAGER: 724-991-2208

COMMUNICATIONS: CTAF/UNICOM 122.7

CLEARANCE DELIVERY PHONE: For CD ctc Pittsburgh Apch at 412-472-5591