

JEANNETTE

GREENSBURG JEANNETTE RGNL (5G8) 3 N UTC-5(-4DT) N40°22.58' W79°36.53'

DETROIT
L-29C

1188 B NOTAM FILE AOO

RWY 02-20: H2605X50 (ASPH) MIRL 0.6% up S

RWY 02: Hill. Rgt tfc.

RWY 20: Trees.

SERVICE: LGT Arpt bcn opr dusk to 0600Z \ddagger . ACTIVATE MIRL Rwy 02-20—CTAF. Rwy 02-20 no twy lgts. NSTD rwy lgt spacing. NSTD thld lgt spacing.

AIRPORT REMARKS: Attended Mon-Fri 1400-2200Z \ddagger . Parachute Jumping. Deer and birds on and invof arpt with occasional rwy incursions. 240' hill/trees 4,690' south of Rwy 02. Terrain drops off rapidly on both ends of rwy.

AIRPORT MANAGER: 724-744-2900

COMMUNICATIONS: CTAF 122.9

CLEARANCE DELIVERY PHONE: For CD ctc Pittsburgh Apch at 412-472-5591

RADIO AIDS TO NAVIGATION: NOTAM FILE AGC.

ALLEGHENY (L) VOR/DME 110.0 AGC Chan 37 N40°16.72' W80°02.45' 082° 20.7 NM to fld. 1285/9W.
HIWAS.

VOR portion unusable:
036°-059° byd 10 NM blo 7,000'
071°-175°
226°-261° byd 10 NM

JERSEY SHORE (P96) 2 E UTC-5(-4DT) N41°12.39' W77°13.55'

DETROIT

554 B NOTAM FILE IPT

RWY 09-27: 3059X130 (TURF) LIRL 0.5% up W

RWY 09: Thld dsplcd 300'. Road.

SERVICE: LGT ACTIVATE LIRL Rwy 09-27, and wind indicator—CTAF. Rwy 09-27 outlined with reflectors, and rwy lgts.

AIRPORT REMARKS: Attended on call. Deer on and invof arpt. Parl twy adj Rwy 09-27 clsd.

AIRPORT MANAGER: 570-398-1391

COMMUNICATIONS: CTAF/UNICOM 122.7

CLEARANCE DELIVERY PHONE: For CD ctc New York ARTCC at 631-468-1425.

JOHN MURTHA JOHNSTOWN-CAMBRIA CO (See JOHNSTOWN on page 288)

JOHNSTOWN

JOHN MURTHA JOHNSTOWN-CAMBRIA CO (JST)(KJST) P (ANG ARNG AR) 3 NE UTC-5(-4DT)

DETROIT
H-10H, 12I, L-29D
IAP, DIAP, AD

N40°18.93' W78°50.08'

2284 B Class I, ARFF Index A NOTAM FILE JST

RWY 15-33: H7004X150 (CONC-GRVD) S-93, D-183, 2D-357,
2D/2D2-845 PCN 61 R/B/W/U HIRL

RWY 15: VASI(V4L)—GA 3.0° TCH 52'. Trees.

RWY 33: MALSR. PAPI(P4R)—GA 3.0° TCH 53'. Trees.

RWY 05-23: H4387X100 (ASPH-GRVD) S-62, D-87, 2S-110
PCN 39 F/A/W/T MIRL

RWY 05: REIL. PAPI(P4L)—GA 3.0° TCH 44'. Tree.

RWY 23: REIL. VASI(V4L)—GA 3.0° TCH 45'. Bldg.

RUNWAY DECLARED DISTANCE INFORMATION

RWY 05: TORA-4386 TODA-4386 ASDA-4386 LDA-4386

RWY 15: TORA-7003 TODA-7003 ASDA-7003 LDA-7003

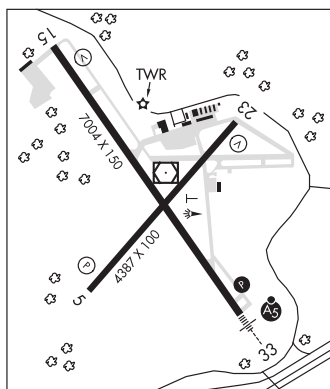
RWY 23: TORA-4386 TODA-4386 ASDA-4386 LDA-4386

RWY 33: TORA-7003 TODA-7003 ASDA-7003 LDA-7003

SERVICE: S4 FUEL 100LL, JET A LGT When twr clsd ACTIVATE MALSR Rwy 33, HIRL Rwy 15-33, PAPI Rwy 33, twy lgts Twy A, Twy B, Twy G, and main terminal apron—CTAF. MIRL Rwy 05-23 unavailable when twr clsd. **MILITARY—FUEL** A, A+ (1100-0400Z \ddagger , C814-361-3500; OT 3 hr PN, C814-254-2425. \$70 fee per occurrence.) (NC-100LL)

AIRPORT REMARKS: Attended 1200-0400Z \ddagger . Arpt unattended 0400-1200Z \ddagger daily. Deer and birds on and invof arpt. 48 hrs PPR for unscheduled air carriers ops with more than 30 passenger seats, call arpt manager 814-536-0002. Twy B between Rwy 05-23 and Twy B2 rstd to acft with wingspan 78' or less. Ldg fee.

MILITARY REMARKS: ARNG All fixed wing ramp use PPR ct ARNG 1300-2130Z \ddagger weekend C814-532-7600. Fixed wing park first 5 pads facing hangar. Ltd maintenance fixed wing. Ramp PCL twy and park 143.3.



CONTINUED ON NEXT PAGE

CONTINUED FROM PRECEDING PAGE

AIRPORT MANAGER: 814-536-0002

WEATHER DATA SOURCES: ASOS 118.325 (814) 535-3511.

COMMUNICATIONS: CTAF 125.75 ATIS 118.325 UNICOM 122.95

JOHNSTOWN RCO 122.1R 113.0T (ALTOONA RADIO)

Ⓡ JOHNSTOWN APP/DEP CON 128.2 121.2 244.875 (1200-0400Z†, other times ctc)

CLEVELAND CENTER 124.4 327.1 (0400-1200Z†) or ctc Cleveland ARTCC at 440-774-0226.

TOWER 125.75 253.5 (1200-0400Z†) GND CON 121.6 CLNC DEL 126.85

KEYSTONE OPS ARNG 139.15 241.35 36.5

AIRSPACE: CLASS D svc 1200-0400Z†; other times CLASS G.

RADIO AIDS TO NAVIGATION: NOTAM FILE JST.

JOHNSTOWN (L) VOR/DME 113.0 JST Chan 77 N40°19.00' W78°50.05' at fld. 2279/6W.

VOR unusable:

035°-047° byd 25 NM blo 11,000'

110°-130°

131°-135° blo 17,000'

255°-324° blo 10,000'

ILS 110.1 1-JST Rwy 33. Class IB. Glideslope unusable byd 5° left of course. Unmonitored when ATCT clsd.

COMM/NAV/WEATHER REMARKS: UNICOM frequency 122.95 avbl for ground svcs only.

JOSEPH A HARDY CONNELLSVILLE (See CONNELLSVILLE on page 273)

KAMPEL (See WELLSVILLE on page 321)

KEATING N41°12.90' W78°08.57' NOTAM FILE AOO.

(H) VORTAC 116.0 ETG Chan 107 241° 15.9 NM to Clearfield-Lawrence. 2250/10W.

RCO 122.1R 116.0T (ALTOONA RADIO)

DETROIT

H-10H, L-30I

KELLER BROTHERS (See LEBANON on page 291)

KRALLTOWN

BERMUDIAN VALLEY AIRPARK (Ø7N) 2 W UTC-5(-4DT) N40°01.01' W77°00.23'

DETROIT

470 NOTAM FILE IPT

RWY 16-34: 2200X100 (TURF)

RWY 16: Thld dspcd 370'. Trees.

RWY 34: Thld dspcd 100'. Trees.

SERVICE: S4

AIRPORT REMARKS: Attended irregularly. Ultralight activity on and invof arpt. Fld soft after prolonged rain. Rwy 16-34 rwy edges marked with white cones, rwy ends marked with orange cones. Rwy 16 and Rwy 34 dplcd thlds marked with 3 white cones each side of rwy and 2 white tires east side of rwy.

AIRPORT MANAGER: (717) 858-5063

COMMUNICATIONS: CTAF 122.9

CLEARANCE DELIVERY PHONE: For CD ctc Harrisburg Apch at 800-932-0712.

LAKEHILL (See MARS on page 293)