

WILKES-BARRE WYOMING VALLEY (WBW)(KWBW) 3 N UTC-5(-4DT) N41°17.84' W75°51.13'**NEW YORK**

543 B NOTAM FILE IPT

L-30K**RWY 07-25:** H3375X75 (ASPH) MIRL**IAP****RWY 07:** PAPI(P2L)—GA 4.0° TCH 40'.**RWY 25:** PAPI(P2L)—GA 3.75° TCH 40'. Trees.**RWY 09-27:** H2191X100 (ASPH-TURF)**RWY 09:** Thld dspcd 669'. Trees.**SERVICE:** S4 FUEL 100LL, JET A LGT ACTIVATE MIRL Rwy 07-25, PAPI Rwy 07, Rwy 25 and rotating bcn—CTAF. Rwy 07-25 preset low ints to ACTIVATE higher ints—CTAF.**AIRPORT REMARKS:** Attended 1300-2200Z±. Rwy 09-27 CLOSED during winter months. +152' transmission lines 6,000' from Rwy 25 thld 585' left marked with red spheres. Rwy 09-27 marked with 3' white cones. Rwy 09 dspcd thld marked with three white cones each side. First 544' Rwy 27 asph, remainder turf.**AIRPORT MANAGER:** 570-288-3257**COMMUNICATIONS:** CTAF/UNICOM 122.8

Ⓡ APP/DEP CON 126.3

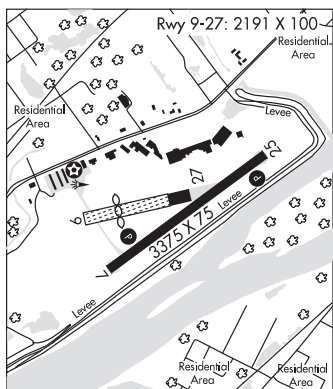
CLEARANCE DELIVERY PHONE: For CD ctc Wilkes-Barre Apxh at 570-655-2084.**RADIO AIDS TO NAVIGATION:** NOTAM FILE AVP.

(L) VORTACW 111.6 LVZ Chan 53 N41°16.37'

W75°41.37' 291° 7.5 NM to fld. 2119/10W.

VOR unusable:

290°-305° byd 15 NM blo 6,000'

**WILKES-BARRE/SCRANTON INTL (AVP)(KAVP) 5 SW UTC-5(-4DT) N41°20.31'****NEW YORK**

W75°43.40'

H-101, 121, L-30K, 33A

962 B LRA ARFF Index—See Remarks NOTAM FILE AVP

IAP, AD**RWY 04-22:** H7502X150 (ASPH-GRVD) S-133, D-173, 2D-300

PCN 45 F/A/X/T HIRL 0.7% up SW

RWY 04: MALSR. PAPI(P4R)—GA 3.0° TCH 58'. RVR-TR**RWY 22:** REIL. VASI(V4L)—GA 3.0° TCH 54'. RVR-TR Tower. Rgt tfc.**RWY 10-28:** H4300X150 (ASPH-GRVD) S-58, D-80, 2S-101,

2D-125 MIRL 0.3% up E

RWY 10: REIL. PAPI(P2L)—GA 3.0° TCH 43'. Rgt tfc.**RWY 28:** REIL. Trees. Rgt tfc.**RUNWAY DECLARED DISTANCE INFORMATION****RWY 04:** TORA-7501 TODA-7501 ASDA-7501 LDA-7501**RWY 10:** TORA-4300 TODA-4300 ASDA-4300 LDA-4300**RWY 22:** TORA-7501 TODA-7501 ASDA-7501 LDA-7501**RWY 28:** TORA-4300 TODA-4300 ASDA-4300 LDA-4300**ARRESTING GEAR/SYSTEM****RWY 04:** EMAS**RWY 22:** EMAS**SERVICE:** S3 FUEL 100LL, JET A OX 2, 4**AIRPORT REMARKS:** Attended continuously. Deer and birds on and invof arpt. Rwy 04-22 precipitous drop-off each rwy end. Class I, ARFF

Index B. Index C ARFF equipment avbl upon request call 570-602-2040. Unlgtd twr 1130' 1.3 miles east AER 28, unlgtd twr 1463' 1.7 miles east AER 28, unlgtd twr 1652' 2.4 miles east AER 28. Rwy 28 unlgtd high terrain trees, 1155' MSL 0.91 miles east AER 28, 1463' MSL 1.49 miles east-southeast AER 28, 1667' MSL 2.25 miles east AER 28, 1920' MSL 2.84 miles east AER 28. For FBO svcs 0500-1000Z± local Mon-Fri and 0200-0500Z± local Sat-Sun call (570) 457-4485. Ldg fee. Flight Notification Service (ADCUS) avbl.

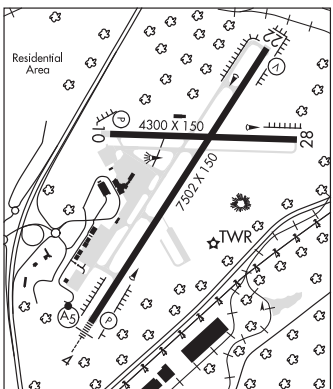
AIRPORT MANAGER: 570-602-2000**WEATHER DATA SOURCES:** ASOS (570) 655-0748**COMMUNICATIONS:** UNICOM 122.95 ATIS 111.6

RCO 122.2 (WILLIAMSPORT RADIO)

Ⓡ APP/DEP CON 120.95 (280°-100°) 126.3 (101°-279°)

TOWER 120.1 GND CON 121.9**AIRSPACE:** CLASS D.

TRSA svc ctc APP CON within 20 NM



CONTINUED ON NEXT PAGE

CONTINUED FROM PRECEDING PAGE

RADIO AIDS TO NAVIGATION: NOTAM FILE AVP.

(L) **VORTACW** 111.6 LVZ Chan 53 N41°16.37' W75°41.37' 349° 4.2 NM to fld. 2119/10W.

VOR unusable:

290°-305° byd 15 NM blo 6,000'

ILS/DME 109.9 I-AVP Chan 36 Rwy 04. Localizer offset angle 001° 46 min. LOC unusable byd 20° right of course.

DME unusable byd 30° left and right of course. Glideslope unusable for coupled apchs blo 2,530' MSL. DME also serves izk ILS.

ILS/DME 109.9 I-IZK Chan 36 Rwy 22. Class IT. LOC unusable byd 30° left and right of course. DME unusable byd 30° left and right of course.

WILLIAM T PIPER MEM (See LOCK HAVEN on page 292)

WILLIAMSBURG

COVE VALLEY (6G6) 2 W UTC-5(-4DT) N40°27.27' W78°14.28'

DETROIT

1156 NOTAM FILE A00

RWY 04-22: 2750X100 (TURF)

RWY 04: Thld dsplcd 285'. Road. Rgt tfc.

RWY 22: Thld dsplcd 286'. Brush.

SERVICE: S4

AIRPORT REMARKS: Attended Mon-Fri 1300-2200Z±, Sat-Sun irregularly. Arpt safety briefing rqrd before Idg 814-832-2694.

Deer and occasional geese on and invof arpt. Turf soft during spring and after rains, no ops when rwy is soft or snow covered. Rwy 04-22 marked with white boundary markers. Rwy 04 thld dsplcd marked with white barrels. Rwy 22 thld dsplcd marked with white barrels.

AIRPORT MANAGER: 814-832-2694

COMMUNICATIONS: CTAF 122.9

CLEARANCE DELIVERY PHONE: For CD ctc Cleveland ARTCC at 440-774-0490.