

WILLIAMSPORT RGNL (IPT)(KIPT) 4 E UTC-5(-4DT) N41°14.50' W76°55.31'

NEW YORK

528 B ARFF Index—See Remarks NOTAM FILE IPT

H-10H, 12I, L-30J

RWY 09-27: H6825X150 (ASPH-GRVD) S-65, D-100, 2S-127,

2D-190 PCN 43 F/A/X/T HIRL

RWY 09: REIL. Trees.

RWY 27: MALSR. Thld dsplcd 255'. Trees. Rgt tfc.

RWY 12-30: H4273X150 (ASPH) S-200, D-200, 2S-175, 2D-400
PCN 46 F/A/X/T MIRL

RWY 12: PAPI(P2L)—GA 3.75° TCH 45'. Trees.

RWY 30: PAPI(P2L)—GA 4.0° TCH 41'. Trees. Rgt tfc.

RUNWAY DECLARED DISTANCE INFORMATION

RWY 09: TORA-6825 TODA-6825 ASDA-6073 LDA-6073

RWY 12: TORA-4273 TODA-4273 ASDA-4273 LDA-4273

RWY 27: TORA-6825 TODA-6825 ASDA-6318 LDA-6063

RWY 30: TORA-4273 TODA-4273 ASDA-4273 LDA-4273

SERVICE: S4 FUEL 100LL, JET A OX 1 LGT When twr clsd ACTIVATE
MALSR Rwy 27, HIRL Rwy 09-27, REIL Rwy 09 and twy lgts—CTAF.
MIRL Rwy 12-30 off. PAPI Rwy 12 and Rwy 30 operate continuously.
Rwy 30 PAPI baffled unusable byd 7° left side of course.

AIRPORT REMARKS: Attended 1130-0330Z†. After hrs by prior
coordination call 570-368-2651. Fuel and svcs avbl 1030-0300Z†,
after hrs by prior coordination call 570-368-2651. Arpt clsd to
banner towing ops. Twy J clsd to acct with wing span over 78'. Class I, ARFF Index A. PPR 12 hrs for unscheduled air
carrier ops with more than 30 passenger seats 0400-1100Z† daily call arpt manager 570-368-2444. Index B coverage
avbl upon req call arpt manager 570-368-2444. Deer and birds on and invd arpt especially AER 27 and AER 30. Unlgt
crane 90' AGL 0.5 miles SE AER 30 permanently. For landside access from arpt after hrs use computerized gate system
at east end of FBO apron. Cold temperature rstd arpt. Altitude correction required at or blo -10C. Ldg fee.

AIRPORT MANAGER: 570-368-2444

WEATHER DATA SOURCES: ASOS 125.225 (570) 368-3420.

COMMUNICATIONS: CTAF 119.1 UNICOM 122.95

RCO 122.1R 114.4T (WILLIAMSPORT RADIO)

RCO 122.2 (WILLIAMSPORT RADIO)

Ⓡ **NEW YORK CENTER APP/DEP CON** 124.9

TOWER 119.1 (1130-0330Z†) **GND CON** 121.9

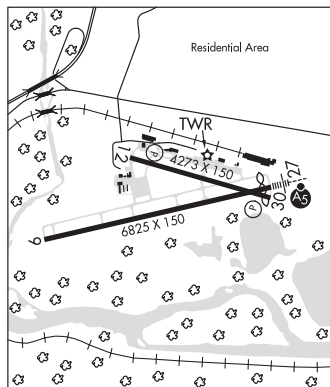
AIRSPACE: CLASS D svc 1130-0330Z†; other times CLASS E.

RADIO AIDS TO NAVIGATION: NOTAM FILE IPT.

(L) **VOR/DME** 114.4 FQM Chan 91 N41°20.31' W76°46.49' 238° 8.8 NM to fld. 2098/9W.

ILS/DME 110.1 I-IPT Chan 38 Rwy 27. Class IE. LOC unusable byd 028° left of course. DME unusable byd 028°
left of course.

COMM/NAV/WEATHER REMARKS: When twr clsd New York Center provides Cinc Del on 124.9.



WINGS FLD (See PHILADELPHIA on page 302)

YARDLEY N40°15.20' W74°54.46' NOTAM FILE IPT.

NEW YORK

(L) **VOR/DME** 108.2 ARD Chan 19 082° 4.5 NM to Trenton Mercer. 294/10W.

H-10I, L-34G, A

VOR unusable:

020°-040°

195°-225° byd 25 NM blo 5,000'

250°-265° blo 3,500'

266°-280° byd 20 NM blo 5,000'

281°-300° byd 14 NM blo 6,000'

DME unusable:

225°-275° byd 25 NM blo 5,000'

RCO 122.1R 108.2T (WILLIAMSPORT RADIO)