

## BAR HARBOR

**HANCOCK CO—BAR HARBOR** (BHB)(KBHB) 8 NW UTC-5(-4DT) N44°26.98' W68°21.69'

HALIFAX  
H-11D, L-321  
IAP

83 B Class I, ARFF Index A NOTAM FILE BHB

**RWY 04-22:** H5200X100 (ASPH) D-72, 2S-91, 2D-100

PCN 40 F/D/X/T HIRL

**RWY 04:** REIL. VASI(V4L)—GA 3.0° TCH 55'. Trees.

**RWY 22:** MALSf. VASI(V4L)—GA 3.0° TCH 55'.

**RWY 17-35:** H3363X75 (ASPH) S-13, D-20 1.1% up N

**RWY 17:** Thld dsplcd 684'. Tree.

**RWY 35:** Thld dsplcd 111'.

**RUNWAY DECLARED DISTANCE INFORMATION**

**RWY 04:** TORA-5200 TODA-5200 ASDA-5200 LDA-5200

**RWY 22:** TORA-5200 TODA-5200 ASDA-5200 LDA-5200

**SERVICE:** S4 FUEL 100LL, JET A OX 3, 4 LGT ACTIVATE MALSf Rwy 22, REIL Rwy 04, VASI Rwy 04 and Rwy 22, HIRL Rwy 04-22—122.7.

**AIRPORT REMARKS:** Attended Oct-Apr 1300-2300Z, May-Sep

1200-0200Z. Grass areas unavbl for acct ops exc PPR

207-667-7329. Seaplane ramp unavbl for acct ops exc PPR

207-667-7329. Rwy conds may not be current and/or avbl on

weekends, hols, and 2100-1230Z Mon-Fri. Birds on and invof arpt.

Glider ops on and invof arpt. Rwy 04-22 due to hump at midpoint,

opposite ends of rwy not visible at gnd level. Rwy 17-35 not avbl for

takeoffs and ldgs for air carriers with 10 or more passenger seats. PPR for overweight ldgs ctc arpt manager

207-667-7329. Twy B clsd to all acct greater than 10,000 lbs. Twy F and Twy G clsd Dec 1-Mar 31 annually. During

VFR conditions when wind speed is less than 5 kts as reported by AWOS or UNICOM, all acct using Rwy 04-22 are requested to tkof and land on Rwy 22 for noise abatement procs.

**AIRPORT MANAGER:** 207-667-7329

**WEATHER DATA SOURCES:** AWOS-3PT 118.35 (207) 667-7364.

**COMMUNICATIONS:** CTAF/UNICOM 123.0

Ⓡ BANGOR APP/DEP CON 133.6

CLNC DEL 119.9

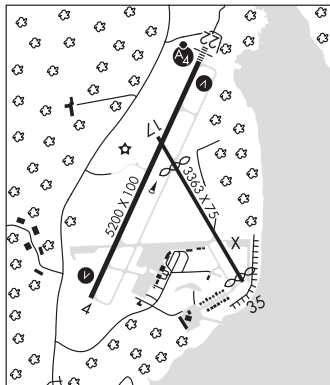
**CLEARANCE DELIVERY PHONE:** For CD ctc Bangor Apch at 207-561-2521.

**AIRSPACE:** CLASS E.

**RADIO AIDS TO NAVIGATION:** NOTAM FILE BGR.

**BANGOR (H) VORTAC** 114.8 BGR Chan 95 N44°50.51' W68°52.44' 156° 32.2 NM to fld. 360/19W. HIWAS.

ILS/DME 108.3 I-BHB Chan 20 Rwy 22. Class IB. Unmonitored.



**BELFAST MUNI** (BST)(KBST) 1 SW UTC-5(-4DT) N44°24.56' W69°00.71'

MONTREAL  
L-321  
IAP

198 B NOTAM FILE BGR

**RWY 15-33:** H4000X100 (ASPH) S-30 MIRL 1.0% up NW

**RWY 15:** REIL. Tree.

**RWY 33:** REIL. Trees.

**SERVICE:** S2 LGT ACTIVATE REIL Rwy 15 and Rwy 33 and MIRL Rwy 15-33—CTAF.

**AIRPORT REMARKS:** Attended irregularly. Deer and birds on or invof arpt. Sfc

cond reported Mon-Fri 1400-2200Z Dec-Mar. Gnd transportation

avbl. 80' tall obstruction lgts along both sides of primary sfc and tree

line. Call ahead for FBO svcs 207-338-0298 or 207-338-4456.

Free unsecured wifi avbl. For more information:

[www.cityofbelfast.org/airport](http://www.cityofbelfast.org/airport).

**AIRPORT MANAGER:** 207-338-3370X600

**WEATHER DATA SOURCES:** AWOS-AV 122.975 (207) 930-7071.

**COMMUNICATIONS:** CTAF/UNICOM 122.975

Ⓡ BANGOR APP/DEP CON 118.925

**CLEARANCE DELIVERY PHONE:** For CD ctc Bangor Apch at 207-561-2521.

**RADIO AIDS TO NAVIGATION:** NOTAM FILE BGR.

**BANGOR (H) VORTAC** 114.8 BGR Chan 95 N44°50.51'

W68°52.44' 212° 26.6 NM to fld. 360/19W. HIWAS.

**COMM/NAV/WEATHER REMARKS:** AWOS avbl via CTAF-2 clicks or call (207)

930-7071 or go to [www.digiwx-bst.com](http://www.digiwx-bst.com).

