

PORTLAND INTL (PDX)(KDPX) P (ANG) 4 NE UTC-8(-7DT) N45°35.32' W122°35.81'

31 B LRA Class I, ARFF Index E NOTAM FILE PDX

RWY 10R-28L: H11000X150 (CONC-GRVD) S-200, D-200, 2S-175,

2D-360 PCN 89 R/D/W/T HIRL CL

RWY 10R: ALSF2. TDZL. PAPI(P4R)—GA 3.0° TCH 71'. RVR-TMR Rgt tfc.

RWY 28L: MALSR. PAPI(P4L)—GA 3.0° TCH 72'. RVR-TMR

RWY 10L-28R: H9825X150 (ASPH-GRVD) S-200, D-200, 2S-175,

2D-400 PCN 133F/D/W/T HIRL CL

RWY 10L: MALSR. PAPI(P4L)—GA 3.0° TCH 51'. RVR-TMR Thld dspcld 1290'.

RWY 28R: MALSR. PAPI(P4R)—GA 3.0° TCH 70'. RVR-TMR Thld dspcld 535'. Road. Rgt tfc.

RWY 03-21: H6000X150 (ASPH-GRVD) S-120, D-250, 2S-175,

2D-380 PCN 82 F/D/X/T MIRL

RWY 03: REIL. PAPI(P4L)—GA 3.3° TCH 60'.

RWY 21: REIL. PAPI(P4R)—GA 3.6° TCH 32'. Road.

RUNWAY DECLARED DISTANCE INFORMATION

RWY 03: TORA-6000 TODA-6000 ASDA-6000 LDA-6000

RWY 10L: TORA-9825 TODA-9825 ASDA-9825 LDA-8535

RWY 10R: TORA-11000 TODA-11000 ASDA-11000 LDA-11000

RWY 21: TORA-6000 TODA-6000 ASDA-6000 LDA-6000

RWY 28L: TORA-11000 TODA-11000 ASDA-11000 LDA-11000

RWY 28R: TORA-9825 TODA-9825 ASDA-9825 LDA-9290

ARRESTING GEAR/SYSTEM

RWY 10R TYPE-H BAK-12B(B) (1625).

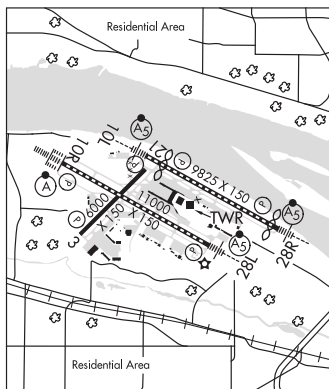
TYPE-H BAK-12B(B) (2000'). **RWY 28L**

SERVICE: S4 FUEL 100LL, JET A OX 1, 2, 3, 4 LGT RWY 03 PAPI unusbl byd 4 deg left and rgt of RCL and byd 5 NM

unusbl. **MILITARY—** JASU 4(A/M32A-86) (MC-11) 1(MA-1A) 1(Fuel A) C503-331-4220). J8 (Mil) (NC-100LL, A) FLUID LHOXRB OIL O-128-133-148(Mil) **TRAN ALERT** No tran svc avbl.

AIRPORT REMARKS: Attended continuously. Arpt clsd to non-pwrd acft exc in emerg. Migratory and wintering flocks of large waterfowl on and invof arpt. Heavy seagull act Sep-Apr, exp high number of birds yr round, check lcl advisories. ASSC in use. Operate transponders with altitude reporting mode and ADS-B (if equipped) enabled on all airport surfaces. Rwy 28R perimeter road at 200' from rwy thld and 408' rgt from rwy extdd cntrln. Unctd tfc at Pearson Field Vancouver WA, 3 NM west of Rwy 10L thld on extdd cntrln. Rwy 21 clsd to Height Group IV acft with cockpit to wheel hgt greater than 22'. Rwy 28R 60' levee road lctd aprxly parallel to rwy at 200' fm thr and 507' rt fm rwy extdd cntrln. NS ABTMT procedures in effect call noise office, 503-460-4100. Rwy 28L arr are noise sensitive, exp apch to Rwy 28R with transition to Rwy 28L. Twy W clsd to acft with wingspan greater than 118', unless under tow. Twy K to the North ramp clsd to through tfc. Twy A3 btn Twy A and the GA ramp clsd to acft with wingspan gtr than 135 feet unless under tow. At the west end arm/dearm area on Twy C no acft of any type may taxi past the arm/dearm area while it is being used. Acft authorized to utilize the NW ramp will be towed to/from this ramp. Area of Twy T btn M and E3 not visible from twr. Twy T btn exits B5 and B6 clsd to acft with wingspan of 118' and greater. Twy C3 clsd to acft with a wingspan equal to or greater than 79'. Twy V clsd to acft with wingspan greater than 135'. Acft with wingspan greater than 118' prohibited from turning westbound onto Twy A from Twy V unless under tow. Acft with wingspan greater than 118' are prohibited from turning eastbound on Twy C from southwestbound on Twy F unless under tow. Twy E3 clsd to acft with wingspan greater than 198'. Twy T between Twy E3 and Twy B5 clsd to acft with wingspan greater than 198'. Twy C between Twy C6 and Twy C8 clsd to acft with wingspan greater than 180'. 180° turns by acft weighing in excess of 12,500 lbs prohibited on Rwy 10L-28R, Rwy 03-21 and all twys. PDX has fac constraints that limit its ability to accommodate diverted flts and maintain the arpt safe ops dur irregular ops. Acft ops should ctc the on duty arpt ops supervisor for airside at 503-460-4236 to coord diverted flts exc in the case of a declared in-flt emerg. Ldg fee. Coml acft and ops of acft with an FAA certified max gross ldg wt that exceeds 10,000 lbs are rqrtd to pay a ldg fee. Possible Rwy 28L glideslope fluctuation prior to addum when weather is greater than 800/2. Flight Notification Service (ADCUS) avbl.

MILITARY REMARKS: ANG See FLIP AP/1 for Supplementary Arpt Information. Hazardous bird cond exist. Phase I May-Oct, Phase II Nov-Apr. Current bird watch cond are not reported on ATIS. PPR/Official Business Only. Base ops opr 1500-2300Z± Mon-Fri exc hol, DSN 638-4390, C503-335-4390. Ctc Base OPS 15 mins prior to ldg and after departing on 281.2. Tran quarters not avbl. CAUTION: Obst lgtg is not NVD compatible. NVD not authorized while airborne invof afld. NSTD yellow park spot designators and equipment tool box location painted on ramp. Please ctc base ops or req follow me if not familiar with Portland ANG base park procedures.



SEATTLE
H-1B, L-1C
IAP, DIAP, AD

CONTINUED ON NEXT PAGE

CONTINUED FROM PRECEDING PAGE

AIRPORT MANAGER: 503-415-6195

WEATHER DATA SOURCES: ASOS (503) 493-7687 WSP.

COMMUNICATIONS: D-ATIS 128.35 269.9 (503) 493-7557 UNICOM 122.95

Ⓡ APP/DEP CON 118.1 284.6 (100°-279° HIGH) 124.35 299.2 (280°-099°) 126.9 (APCH FINAL)

TOWER 118.7 257.8 (Rwy 10L-28R) 123.775 251.125 (Rwy 03-21 and Rwy 10R-28L)

GND CON 121.9 348.6 CLNC DEL 120.125 318.1

AFR OPNS 138.45 252.8 ANG COMD POST 288.9 (Stump Town)

ANG OPNS 280.5 PORTLAND GUARD OPS 281.2

CPDLC (LOGON KUSA)

AIRSPACE: CLASS C svc ctc APP CON.

VOR TEST FACILITY (VOT) 111.0

RADIO AIDS TO NAVIGATION: NOTAM FILE PDX.

BATTLE GROUND (H) VORTACW 116.6 BTG Chan 113 N45°44.87' W122°35.49' 160° 9.6 NM to fld. 253/21E.

TACAN AZIMUTH & DME unusable:

035°-085° byd 35 NM blo 10,000'

COLUMBIA (H) TACAN Chan 29 CBU (109.2) N45°35.32' W122°36.68' at fld. 22/20E.

TACAN unusable:

020°-030° byd 30 NM blo 9,500'

030°-050° byd 20 NM blo 9,500'

120°-130° byd 15 NM blo 8,500'

155°-250° byd 15 NM blo 10,500'

250°-270° byd 20 NM blo 8,500'

ILS/DME 111.3 I-VDG Chan 50 Rwy 10L. Class IT. DME also serves Rwy 28R.

ILS/DME 110.5 I-PDX Chan 42 Rwy 10R. Class IIIE. DME also serves Rwy 28L.

LOC/DME 108.9 I-GPO Chan 26 Rwy 21.

ILS/DME 110.5 I-MJM Chan 42 Rwy 28L. Class IT. DME also serves Rwy 10R. Autocoupled apch not applicable blw 880' MSL (2.4NM from thld).

ILS/DME 111.3 I-IAP Chan 50 Rwy 28R. DME also serves Rwy 10L.

COMM/NAV/WEATHER REMARKS: PDX monitors 121.5 for McMinnville (MMV).

PORTLAND-HILLSBORO (HIO)(KHIO) 15 SW UTC-8(-7DT) N45°32.53' W122°57.04'

208 B TPA—See Remarks LRA NOTAM FILE HIO MON Airport

RWY 13R-31L: H6600X150 (ASPH) S-50, D-70, 2S-89, 2D-110

HIRL

RWY 13R: MALSR. PAPI(P4L)—GA 3.0° TCH 49'. RVR-T

RWY 31L: REIL. PAPI(P4L)—GA 3.0° TCH 50'. RVR-R Tree.

RWY 02-20: H3821X75 (ASPH) S-54.5, D-74, 2D-139

PCN 20 F/C/X/T MIRL

RWY 02: PAPI(P4R)—GA 3.0° TCH 41'. Road. Rgt tfc.

RWY 20: PAPI(P4L)—GA 3.0° TCH 40'. Tree.

RWY 13L-31R: H3600X60 (ASPH) S-28 PCN 10 F/D/Y/T MIRL

RWY 13L: PAPI(P4L)—GA 3.0° TCH 27'.

RWY 31R: PAPI(P4L)—GA 3.0° TCH 27'. Rgt tfc.

LAND AND HOLD—SHORT OPERATIONS

LDG RWY	HOLD—SHORT POINT	AVBL LDG DIST
RWY 13R	02-20	4922

RWY 13R

SERVICE: S4 FUEL 100LL, JET A OX 1, 2, 4 LGT When twr clsd

ACTIVATE MALSR Rwy 13R—CTAF. Rwy 13L PAPI unusbl beyond 08

deg left and rgt of cntrln. Rwy 31R PAPI unusbl beyond 08 deg left and

rgt of cntrln.

AIRPORT REMARKS: Attended 1400-0600Z†. Rwy 13R-31L clsd to touch

and go ldgs between 0600-1400Z†. Be alert for bird act in vicinity Nov

to May. Glider ops 5 NM northwest during dalgt hrs Mar-Oct. NS

ABTMT procedures in effect call 503-460-4100 or 800-938-6647. Noise sensitive areas border arpt west, south and

east. Rwy 31L is preferred rwy for NS ABTMT. Avoid low level over flts of residential areas whenever possible. Nighttime

touch and gos are discouraged 0600-1400Z†. TPA—1208 (1000), turbine and large acct 1708 (1500). Rwy 13R

run-up area not visible from twr. Rwy 02-20 has 150' x 75' paved blast pads at both ends. Rwy 13R-31L has 200' x

150' paved blast pads at both ends. Be alert, extv helicopter training operations to Twy A, Twy B & Twy D. Flight

Notification Service (ADCUS) avbl, 2 hr advance ntc rqr Mon-Sat 0100-1400Z† and 24 hrs Sun and hol. Coml acct and

oprs of acct with an FAA certified maximum gross ldg weight that exceeds 10,000 lbs are rqr to pay a ldg fee. Ldg fee.

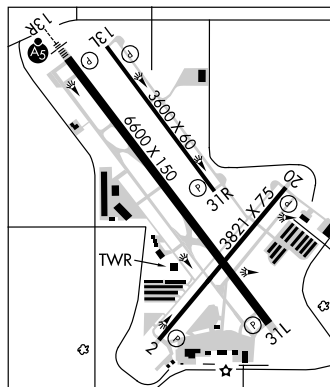
Fee based CSTMS facility \$60 single engine, \$175 twin engine, \$500 turbine. CSTMS avbl 2000-0400Z†.

503-693-1069, otherwise CSTMS Flt Notification (ADCUS) avbl, advance coordination rqr 503-326-3230.

SEATTLE

H-1B, L-1C

IAP AD



CONTINUED ON NEXT PAGE