

OLYMPIA RGNL (OLM)(KOLM) 4 S UTC-8(-7DT) N46°58.16' W122°54.15'
 208 B LRA NOTAM FILE OLM
RWY 17-35: H5500X150 (ASPH-GRVD) S-75, D-94, 2S-87, 2D-142

SEATTLE
 H-1B, L-1D
 IAP, AD

HIRL
RWY 17: MALSR. PAPI(P4L)—GA 3.0° TCH 54'.
RWY 35: REIL. PAPI(P4L)—GA 3.0° TCH 50'. Rgt tfc.
RWY 08-26: H4157X150 (ASPH) S-30
RWY 08: Trees. Rgt tfc.
RWY 26: Tree.

SERVICE: S4 FUEL 100LL, JET A OX 1, 3, 4 LGT PAPI Rwy 17 and Rwy 35 opr continuously. When twr clsd ACTIVATE HIRL Rwy 17-35, MALSR Rwy 17, REIL Rwy 35, twy lgts and directional signage—CTAF.

AIRPORT REMARKS: Attended 1600-0200Z†. Airport field conditions unmonitored 0100- 1500Z†. Twy lgts on Twy A, Twy B, Twy L and Twy W.

AIRPORT MANAGER: 360-528-8074

WEATHER DATA SOURCES: ASOS 135.725 (360) 754-0781. HIWAS 113.4 OLM. SAWRS.

COMMUNICATIONS: CTAF 124.4 ATIS 135.725 UNICOM 122.95

Ⓡ SEATTLE APP/DEP CON 121.1

TOWER 124.4 (1600-0400Z†) GND CON 121.6

CLEARANCE DELIVERY PHONE: For CD when ATCT is clsd ctc Seattle Apch at 206-214-4723.

AIRSPACE: CLASS D svc 1600-0400Z†; other times CLASS E.

RADIO AIDS TO NAVIGATION: NOTAM FILE OLM.

(H) VORTACW 113.4 OLM Chan 81 N46°58.30' W122°54.11' at fld. 200/19E. HIWAS.

TACAN AZIMUTH & DME unusable:

223°-258° byd 20 NM blo 4,100'

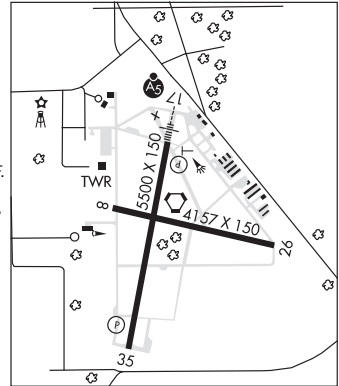
258°-283° byd 30 NM blo 4,100'

358°-043° byd 10 NM blo 6,000'

358°-043° byd 20 NM blo 7,000'

ILS 111.9 I-OLM Rwy 17. Class IB. Unmonitored when ATCT closed. LOC unusable byd 25° rgt of course.

COMM/NAV/WEATHER REMARKS: Emerg freq 121.5 not avbl at twr.



OMAK (OMK)(KOMK) 3 N UTC-8(-7DT) N48°27.87' W119°31.08'
 1305 B NOTAM FILE OMK

SEATTLE
 L-13A
 IAP

RWY 17-35: H4667X150 (ASPH-GRVD) S-75, D-200, 2D-400 MIRL
RWY 17: REIL. PAPI(P2L)—GA 3.0° TCH 40'.
RWY 35: REIL. PAPI(P2L)—GA 3.0° TCH 40'.

SERVICE: FUEL 100LL, JET A LGT ACTIVATE REIL Rwy 17 and Rwy 35; MIRL Rwy 17-35—CTAF, PAPI Rwy 17 and Rwy 35 opr continuously. Rwy 17 VGSJ unusbl byd 2.5 NM, does not provide obstn clnc byd 2.5 NM from thld.

AIRPORT REMARKS: Unattended. Fuel avbl 24 hrs—credit card, no govt credit cards. Cold temperature restricted airport. Altitude correction required at or below -15°C.

AIRPORT MANAGER: 509-826-1170

WEATHER DATA SOURCES: ASOS 118.325 (509) 826-2655.

COMMUNICATIONS: CTAF/UNICOM 122.8

RCO 122.2 (SEATTLE RADIO)

SEATTLE CENTER APP/DEP CON 126.1

RADIO AIDS TO NAVIGATION: NOTAM FILE EPH.

EPHRATA (H) VORTACW 112.6 EPH Chan 73 N47°22.68'

W119°25.44' 336° 65.3 NM to fld. 1250/21E.

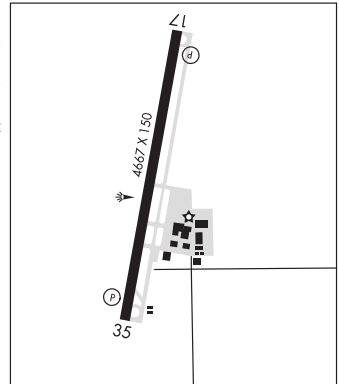
VOR unusable:

310°-350° byd 25 NM blo 6,500'

TACAN AZIMUTH & DME portion unusable:

280°-295° byd 25 NM blo 7,000'

310°-350° byd 25 NM blo 6,500'



ORCAS ISLAND (See EASTSOUND on page 188)