

**CASPER****CASPER/NATRONA CO INTL** (CPR)(KCPR) 7 NW UTC-7(-6DT)

N42°54.35' W106°27.82'

**CHEYENNE**

5344 B LRA Class I, ARFF Index B NOTAM FILE CPR

**H-3F, 5A, L-11E, 12F****RWY 03-21:** H10165X150 (ASPH-GRVD) S-130, D-170, 2D-270**IAP, AD**

PCN 46 F/B/X/T HIRL

**RWY 03:** MALSR. PAPI(P4R)—GA 3.0° TCH 50'. RVR-T**RWY 21:** REIL. VASI(V4L)—GA 3.0° TCH 56'. RVR-R**RWY 08-26:** H8679X150 (ASPH-GRVD) S-85, D-140, 2D-260

PCN 44 F/B/X/T HIRL

**RWY 08:** MALSR. VASI(V4R)—GA 3.0° TCH 103'. RVR-T**RWY 26:** REIL. PAPI(P4R)—GA 3.0° TCH 50'. RVR-R 0.4% up.**RUNWAY DECLARED DISTANCE INFORMATION****RWY 03:** TORA-10165 TODA-10165 ASDA-10165 LDA-10165**RWY 08:** TORA-8679 TODA-8679 ASDA-8679 LDA-8679**RWY 21:** TORA-10165 TODA-10165 ASDA-10165 LDA-10165**RWY 26:** TORA-8679 TODA-8679 ASDA-8679 LDA-8679**SERVICE:** S4 FUEL 100LL, JET A OX 1, 2, 3, 4 LGT When twr clsd ACTIVATE HIRL Rwy 03-21 and Rwy 08-26, MALSR Rwy 03 and Rwy 08 and twy lgts—CTAF.**AIRPORT REMARKS:** Attended continuously. Emerg pwr avbl Rwy 08-26 and Rwy 03-21. Rwy 08-26 and Rwy 03-21 have lgtd distance remaining signs. Rwys clsd to FSL, TGL, and PLA aircraft more than 250,000 lbs except for 4 hrs PPR 307-995-3950. 225' crane 1 NM northeast of arpt. Flight Notification Service (ADCUS) available.**AIRPORT MANAGER:** 307-472-6688**WEATHER DATA SOURCES:** ASOS (307) 472-8960 LAWRS 1200-0400Z‡.**COMMUNICATIONS:** CTAF 118.3 ATIS 126.15 UNICOM 122.95

RCO 122.4 122.6 (CASPER RADIO)

Ⓡ APP/DEP CON 120.65 (1200-0400Z‡)

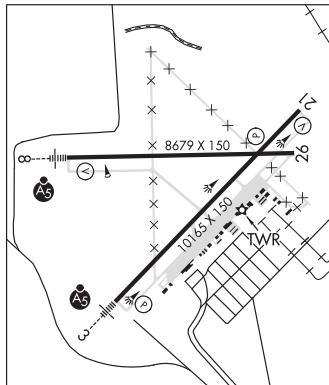
Ⓡ DENVER CENTER APP/DEP CON 135.6 (0400-1200Z‡)

TOWER 118.3 (1200-0400Z‡) GND CON 121.9 CLNC DEL 121.9

**AIRSPACE:** CLASS D svc 1200-0400Z‡; other times CLASS E.**RADIO AIDS TO NAVIGATION:** NOTAM FILE CPR.**MUDDY MOUNTAIN (H) VORW/DME** 116.2 DDY Chan 109 N43°05.45' W106°16.62' 205° 13.8 NM to fld. 5863/12E.

ILS 111.3 I-SYD Rwy 03. Class IB. Syd LOC is unmonitored from 0400-1200Z‡ daily.

ILS 110.3 I-CPR Rwy 08. Class 1E.

**COMM/NAV/WEATHER REMARKS:** Emerg freq 121.5 not avbl at twr. For clnc req and del when ATCT is clsd ctc Casper Radio on 122.4.**HARFORD FLD** (HAD)(KHAD) 5 N UTC-7(-6DT) N42°55.46' W106°18.57'**CHEYENNE**

5370 NOTAM FILE CPR

**RWY 07-25:** 3810X30 (DIRT)**RWY 07:** Bldg.**AIRPORT REMARKS:** Unattended. Antelope on and invof arpt. Rwy 07-25 has +2-4' berms 40' either side of cntrln. Line of sight problem btn Rwy 07 and Rwy 25, Rwy 25 slopes uphill first 510'. Abandoned arpt 1.5 miles west.**AIRPORT MANAGER:** 307-262-0606**COMMUNICATIONS:** CTAF 122.9**CLEARANCE DELIVERY PHONE:** For CD ctc Casper Apch at 307-472-8940, when Apch clsd ctc Denver ARTCC at 303-651-4257.**CASPER** N42°53.75' W106°27.54'**CHEYENNE**

RCO 122.4 122.6 (CASPER RADIO)

**L-11E, 12F****CHEROKEE** N41°45.34' W107°34.92' NOTAM FILE CPR.**CHEYENNE****(H) VORW/DME** 115.0 CKW Chan 97 065° 17.4 NM to Rawlins Muni/Harvey Fld. 7050/15E.**H-3E, L-11E**

RCO 122.4 (CASPER RADIO)