

NATCHITOCHEES RGNL (IER)(KIER) 2 S UTC-6(-5DT) N31°44.14' W93°05.95'

HOUSTON
H-6I, L-22E
IAP

121 B NOTAM FILE IER

RWY 17-35: H5003X150 (ASPH) S-30 MIRL

RWY 17: REIL. PAPI(P4L)—GA 3.0° TCH 45'. Tree.

RWY 35: ODALS. PAPI(P4L)—GA 3.0° TCH 43'. Trees.

RWY 07-25: H4000X100 (ASPH) S-21 MIRL

RWY 07: REIL. PAPI(P2L)—GA 3.0° TCH 50'. Trees.

RWY 25: PAPI(P2L)—GA 3.0° TCH 50'. Tree.

SERVICE: S4 **FUEL** 100LL, JET A1+ **LGT** MIRL Rwy 17-35 and Rwy 07-25 preset low ints dusk to dawn, to increase ints **ACTIVATE** —CTAF. ODALS Rwy 35, REIL Rwy 07 and Rwy 17 preset low ints continuously, to increase ints **ACTIVATE**—CTAF.

AIRPORT REMARKS: Attended dawn-dusk. For arpt attendant after hrs call 318-471-2106. Fuel avbl 24/7 with credit card.

AIRPORT MANAGER: 318-352-0994

WEATHER DATA SOURCES: AWOS-3 119.025 (318) 352-1575.

COMMUNICATIONS: CTAF/UNICOM 122.8

Ⓡ **POLK APP/DEP CON** 125.4

GCO 135.075 (FORT POLK APCH—4 CLICKS; AND DE RIDDER FSS—6 CLICKS)

RADIO AIDS TO NAVIGATION: NOTAM FILE AEX.

ALEXANDRIA (H) VORTAC 116.1 AEX Chan 108 N31°15.40' W92°30.06' 310° 42.0 NM to fld. 80/3E.

VOR unusable:

035°-065° blo 2,000'

066°-094° byd 35 NM blo 3,000'

185°-200° byd 35 NM blo 3,000'

201°-214° byd 35 NM blo 2,000'

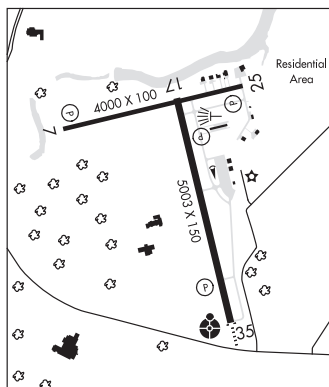
215°-260° blo 2,000'

261°-285° byd 35 NM blo 2,000'

357°-034° byd 35 NM blo 3,000'

NDB (MHW) 407 **OOC** N31°39.45' W93°04.66' 343° 4.8 NM to fld. 115/4E. NOTAM FILE IER.

LOC 110.5 I-IER Rwy 35. LOC unmonitored 0000-1200Z‡.



NEW IBERIA

ACADIANA RGNL (ARA)(KARA) 4 NW UTC-6(-5DT) N30°02.27' W91°53.03'

HOUSTON
H-7D, L-21B, 22E, GOMC
IAP, AD

24 B Class IV, ARFF Index A NOTAM FILE ARA

RWY 17-35: H8002X200 (CONC-GRVD) D-105, 2S-133, 2D-163, 2D/2D2-400 PCN 39 R/B/W/T HIRL

RWY 17: ODALS. PAPI(P4L)—GA 3.0° TCH 51'.

RWY 35: MALSR. PAPI(P4L)—GA 3.0° TCH 52'. Rgt tfc.

RUNWAY DECLARED DISTANCE INFORMATION

RWY 17: TORA-8002 TODA-8002 ASDA-8002 LDA-8002

RWY 35: TORA-8002 TODA-8002 ASDA-8002 LDA-8002

SERVICE: S2 **FUEL** 100LL, JET A **OX** 4 **LGT** Dusk-Dawn. When twr closed HIRL Rwy 17-35 preset low ints, to increase ints and **ACTIVATE** MALSR Rwy 35—CTAF.

AIRPORT REMARKS: Attended 1300-0300Z‡. For fuel after hrs call 337-367-1401, FAX 337-367-1404. Seaplane landing area (water channel) West of and adjacent/parallel to runway. Bird activity on and invof arpt. ARFF PPR for more than 30 passenger seats call arpt manager 337-365-7202. Rotor wing movement and landing area between the rwy and seaway. Intensive helicopter training. Compass rose not avbl.

AIRPORT MANAGER: (337) 365-7202

WEATHER DATA SOURCES: ASOS 133.325 (337) 365-0128.

COMMUNICATIONS: CTAF 125.0 UNICOM 122.95

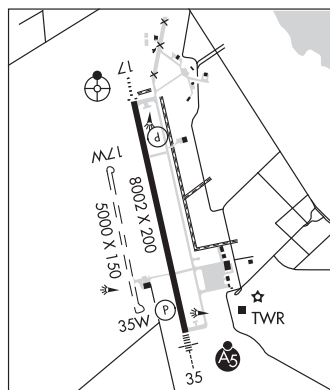
Ⓡ **LAFAYETTE APP/DEP CON** 121.1 (1130-0430Z‡)

HOUSTON CENTER APP/DEP CON 126.35 (0430-1130Z‡)

TOWER 125.0 (1200-0300Z‡) **GND CON** 121.7 **CLNC DEL** 121.7

LAFAYETTE CLNC DEL 118.05 (When twr clsd)

AIRSPACE: CLASS D svc 1200-0300Z‡; other times CLASS G.



CONTINUED ON NEXT PAGE

CONTINUED FROM PRECEDING PAGE

RADIO AIDS TO NAVIGATION: NOTAM FILE LFT.

LAFAYETTE (L) VORTACW 109.8 LFT Chan 35 N30°11.63' W91°59.55' 146° 10.9 NM to fld. 36/3E.

TACAN AZIMUTH unusable:
295°-320° blo 4,000'

NDB (MHW/LOM) 269 AR N29°57.38' W91°51.80' 348° 5.0 NM to fld. 6/OE. NOTAM FILE ARA.

ILS/DME 108.9 I-ARA Chan 26 Rwy 35. Class IE. LOM ACADI NDB.

WATERWAY 17W-35W: 5000X150 (WATER) MIRL

WATERWAY 17W: Rgt tfc.

RUNWAY DECLARED DISTANCE INFORMATION

RWY 17W:TORA-5000 TODA-5000 ASDA-5000 LDA-5000

RWY 35W:TORA-5000 TODA-5000 ASDA-5000 LDA-5000

SEAPLANE REMARKS: Waterway 17-35 NSTD seaway edge lgts green, thld lgts amber. ACTIVATE seaway edge lgts Waterway 17-35-122.7. 3 clicks on 7 clicks off.

NEW ORLEANS

LAKEFRONT (NEW)(KNEW) P (ARNG) 4 NE UTC-6(-5DT) N30°02.55' W90°01.70'

7 B LRA NOTAM FILE NEW

NEW ORLEANS

H-7E, 8F, L-21B, 2ZF, GOMC

IAP, AD

RWY 18R-36L: H6879X150 (ASPH-GRVD) S-60, D-175, 2S-175,

2D-200, 2D/2D2-350 MIRL

RWY 18R: MALSR. PAPI(P4L)—GA 3.0° TCH 51'. Thld dsplcd 239'. Rgt tfc.

RWY 36L: REIL. PAPI(P4L)—GA 3.0° TCH 50'. Thld dsplcd 820'. Berm.

RWY 18L-36R: H3697X75 (ASPH) S-35, D-55, 2D-80 MIRL

RWY 18L: REIL.

RWY 36R: REIL. PAPI(P4L)—GA 3.0° TCH 45'. Bldg. Rgt tfc.

RWY 09-27: H3114X75 (ASPH) S-50, D-80, 2S-102, 2D-100 MIRL

RWY 09: REIL. PAPI(P4L)—GA 3.0° TCH 40'. Berm.

RWY 27: PAPI(P4R)—GA 3.2° TCH 43'. Road. Rgt tfc.

RUNWAY DECLARED DISTANCE INFORMATION

RWY 09: TORA-3113 TODA-3113 ASDA-3113 LDA-3113

RWY 18L:TORA-3697 TODA-3697 ASDA-3697 LDA-3697

RWY 18R:TORA-6880 TODA-6880 ASDA-6035 LDA-5510

RWY 27: TORA-3113 TODA-3113 ASDA-3113 LDA-3113

RWY 36L:TORA-6880 TODA-6880 ASDA-5955 LDA-5135

RWY 36R:TORA-3697 TODA-3697 ASDA-3697 LDA-3697

SERVICE: S4 FUEL 100LL, JET A OX 1, 3 LGT When twr clsd, Rwy

18R-36L, Rwy 09-27, Twy B, C, D, E, F, H, East Hangarline preset low intensity. ACTIVATE 5 clicks for med and 7 clicks for high on CTAF. After 15 min of inactivity, Rwy 18R-36L, Rwy 09-27, Twy B, and Twy F preset low. Original presets can be ACTIVATED to low, med, and high—CTAF. PAPI Rwy 36R unusable btn 0300-1300Z‡ (2100-0700 local). **MILITARY— FUEL A+ (C504-244-4448).** (NC-100LL, A) Ldg fee waived with min fuel purchase.

AIRPORT REMARKS: Attended continuously. For assistance after 2100 local, contact arpt mgmt 504-874-0459. For field conditions after hrs contact ARFF 504-606-9264. Birds on and invof arpt. New AD fuel not avbl within 100' of terminal bldg. Boats as high as 80' pass within 400' of Rwy 09 thld. Boat masts up to 80' within 0.5 NM of AER Rwy 27. Rwy 18R-36L few low spots near intersection of Rwy 09-27 holding water. Twy A uneven pavement. Caution Twy F btn terminal ramp and flight line, first ramp irregular surface. Arpt windcone for ball park ramp lgts OTS perm. ARFF capability equivalent to Index B. PPR to land for acft transporting any items listed in Part 175 title 49, contact 504-606-9264. Overnight parking on terminal ramp must be coordinated with FBO. NOTE: See Special Notices—U.S. Special Customs Requirement.

AIRPORT MANAGER: 504-243-4010

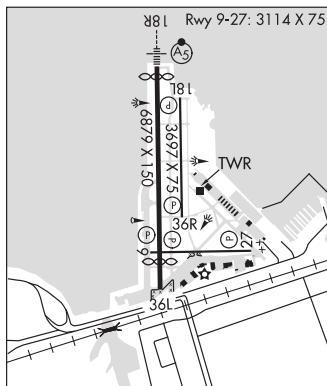
WEATHER DATA SOURCES: ASOS (504) 245-4366 LAWRS.

COMMUNICATIONS: CTAF 119.9 ATIS 124.9

NEW ORLEANS RCO 122.6 (DE RIDDER RADIO)

Ⓡ NEW ORLEANS APP/DEP CON 133.15 (North) 123.85 (South)

TOWER 119.9 (1300-0300Z‡) GND CON 121.7 CLNC DEL 127.4



CONTINUED ON NEXT PAGE