

AUSTIN

**AUSTIN EXECUTIVE** (EDC)(KEDC) 12 NE UTC-6(-5DT) N30°23.85' W97°33.98'

SAN ANTONIO  
H-7C, L-19C, 21A  
IAP AD

620 B NOTAM FILE EDC

**RWY 13-31:** H6025X100 (ASPH) D-101 MIRL 0.4% up NW

**RWY 13:** REIL. PAPI(P4L)—GA 3.0° TCH 40'. Thld dsplcd 600'. Tree.

**RWY 31:** REIL. PAPI(P4L)—GA 3.0° TCH 40'.

**RWY 16-34:** H1550X25 (ASPH) S-8 1.0% up N

**SERVICE:** S4 FUEL 100LL, JET A LGT ACTIVATE MIRL Rwy 13-31, REIL Rwy 13 and Rwy 31—CTAF. PAPI Rwy 13 and Rwy 31 opr continuously.

**AIRPORT REMARKS:** Attended continuously. Fuel avbl 24 hrs with credit card. Acft tie-downs and buildings within Rwy 16-34 primary sfc. Rwy 16-34 twy unmarked. Rwy 13-31 twy edges are marked by reflector posts. Northwest end of Rwy 13-31 and parallel twy have a 16' descending embankment off end of pavement. Touch and go landings prohibited. VFR departures requesting ATC svc remain clear of the final apch course of Rwy 17L and Rwy 17R. If the acft is initially eastbound, ctc Austin Apch Ctl on 127.22. If the acft is initially westbound ctc Austin Apch Ctl on 125.32. Austin clearance delivery 126.025. Rwy 16-34 numbers 20' tall and centerline markings only.

**AIRPORT MANAGER:** 512-247-7678

**WEATHER DATA SOURCES:** AWOS-3 118.825 (512) 616-2967.

**COMMUNICATIONS:** CTAF 120.3 UNICOM 122.975

Ⓡ AUSTIN APP/DEP CON 127.225

**EXECUTIVE TOWER** 120.3 (1200-0400Z‡)

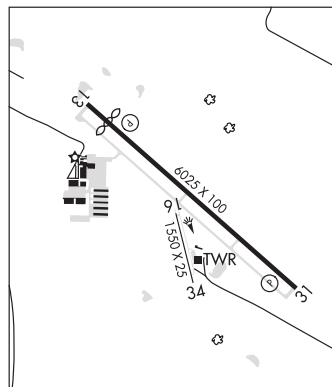
**GND CON** 119.45 **CLNC DEL** 126.025 (Aus App/Dep when EDC twr clsd)

**CLEARANCE DELIVERY PHONE:** For CD ctc Austin Apch at 512-369-7865.

**AIRSPACE:** CLASS D svc 1200-0400Z‡; other times CLASS E.

**RADIO AIDS TO NAVIGATION:** NOTAM FILE AUS.

**CENTEX (H) VORTACW** 112.8 CWK Chan 75 N30°22.71' W97°31.79' 295° 2.2 NM to fld. 593/6E.



**AUSTIN-BERGSTROM INTL** (AUS)(KAUS) P (ARNG) 5 SE UTC-6(-5DT) N30°11.67'

SAN ANTONIO  
H-7C, L-19C, 21A  
IAP AD

W97°40.19'

542 B LRA Class I, ARFF Index D NOTAM FILE AUS

**RWY 17R-35L:** H12250X150 (CONC-GRVD) S-75, D-210, 2S-175,

2D-618, 2D/2D2-913 PCN 98 R/B/W/T HIRL

**RWY 17R:** MALS. PAPI(P4L)—GA 3.0° TCH 60'. RVR-TR Rgt tfc.

0.6% down.

**RWY 35L:** MALS. PAPI(P4L)—GA 3.0° TCH 60'. RVR-TR 0.3% up.

**RWY 17L-35R:** H9000X150 (CONC-GRVD) S-75, D-210, 2S-175, 2D-618, 2D/2D2-913 PCN 92 R/B/W/T HIRL CL

**RWY 17L:** ALSF2. TDZL. PAPI(P4L)—GA 3.0° TCH 74'. RVR-TMR Tower.

**RWY 35R:** MALS. TDZL. PAPI(P4L)—GA 3.0° TCH 59'. RVR-TMR Rgt tfc.

**RUNWAY DECLARED DISTANCE INFORMATION**

**RWY 17L:**TORA-9000 TODA-9000 ASDA-9000 LDA-9000

**RWY 17R:**TORA-12250 TODA-12250 ASDA-12250 LDA-12250

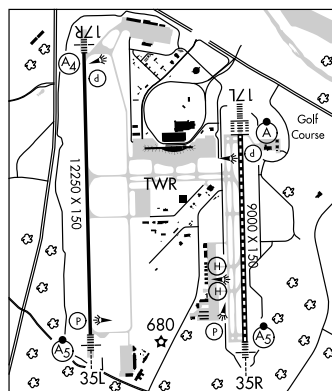
**RWY 35L:**TORA-12250 TODA-12250 ASDA-12250 LDA-12250

**RWY 35R:**TORA-9000 TODA-9000 ASDA-9000 LDA-9000

**SERVICE:** S2 FUEL 100LL, JET A OX 3, 4 MILITARY— FUEL A+ (C512-530-5451) (NC-100LL, A) FLUID HPOX

**AIRPORT REMARKS:** Attended continuously. Bird activity on and in/ovf aprt.

PPR general aviation acft on the passenger terminal apron, call ops 512-530-7550. During the hrs 0600-1200Z‡ arriving acft will be assigned Rwy 35L or Rwy 35R and departing acft will be assigned Rwy 17R and Rwy 17L to avoid noise sensitive areas. Declared low visibility conditions require twr communication prior to push back. Power backs are prohibited during these periods. PPR engine maintenance run-ops call ops 512-530-7550. Twy A clsd to acft with wingspan more than 171'. Terminal apron outer taxilane clsd 0200-1400Z‡.



CONTINUED ON NEXT PAGE

## CONTINUED FROM PRECEDING PAGE

AIRPORT MANAGER: 512-530-2242

WEATHER DATA SOURCES: ASOS (512) 369-7881 WSP

COMMUNICATIONS: UNICOM 122.95 D-ATIS 124.4 (512) 369-7867.

AUSTIN RCO 122.55 (SAN ANGELO RADIO)

Ⓡ AUSTIN APP/DEP CON 127.225 (East) 120.875 (South) 119.0 (West)

AUSTIN TOWER 121.0 GND CON 121.9 CLNC DEL 125.5

CPDLC (LOGON KUSA)

AIRSPACE: CLASS C svc ctc APP CON.

RADIO AIDS TO NAVIGATION: NOTAM FILE AUS.

CENTEX (H) VORTACW 112.8 CWK Chan 75 N30°22.71' W97°31.79' 207° 13.2 NM to fld. 593/6E.

CREED NDB (LOMW) 255 BS N30°05.38' W97°40.57' 359° 6.3 NM to fld. 583/4E.

ILS/DME 110.5 I-VNKK Chan 42 Rwy 17L. Class IIIE. DME also serves Rwy 35R.

ILS/DME 110.95 I-GFQ Chan 46(Y) Rwy 17R. Class IE. DME also serves Rwy 35L.

ILS/DME 110.95 I-BSM Chan 46(Y) Rwy 35L. Class IE. LOM CREED NDB. DME also serves Rwy 17R.

ILS/DME 110.5 I-HCE Chan 42 Rwy 35R. Class IE. DME also serves Rwy 17L.

HELIPAD H1: H60X60 (CONC)

HELIPAD H2: H60X60 (CONC)

**SAN MARCOS RGNL** (HYI)(KHYI) 31 S UTC-6(-5DT) N29°53.57' W97°51.78'

**SAN ANTONIO**

595 B ARFF Index—See Remarks NOTAM FILE HYI

**H-7C, L-19C, 21A**

RWY 08-26: H6330X100 (ASPH) S-80 MIRL

**IAP, AD**

RWY 08: REIL. Fence.

RWY 26: REIL.

RWY 13-31: H5601X100 (ASPH) S-60 MIRL 0.4% up NW

RWY 13: MALSR. PAPI(P2L)—GA 3.0° TCH 57'.

RWY 31: PAPI(P2L)—GA 3.0° TCH 60'.

RWY 17-35: H5214X100 (ASPH) S-20 MIRL 0.4% up N

RWY 17: PAPI(P2L)—GA 3.0° TCH 55'.

SERVICE: S5 FUEL 100LL, JET A QX2, 4 LGT MIRL Rwy 08-26, Rwy 13-31 and Rwy 17-35 preset low ints, to increase ints and ACTIVATE MALSR Rwy 13; PAPI Rwy 13-31, PAPI Rwy 17—CTAF.

AIRPORT REMARKS: Attended sunrise-sunset. 100LL self svc with major credit card. Equivalent ARFF Index A available on request. Rwy 08 10' svc road at thld.

AIRPORT MANAGER: 512-216-6039

WEATHER DATA SOURCES: AWOS-3PT (512) 353-8005

COMMUNICATIONS: CTAF 126.825 ATIS 120.825 (512-353-8005)

Ⓡ AUSTIN APP/DEP CON 119.0

TOWER 126.825 (1300-0100Z‡)

GND CON/CLNC DEL 120.125 CLNC DEL 121.35 (When twr clsd)

CLEARANCE DELIVERY PHONE: For CD ctc Austin Apch at 512-369-7865.

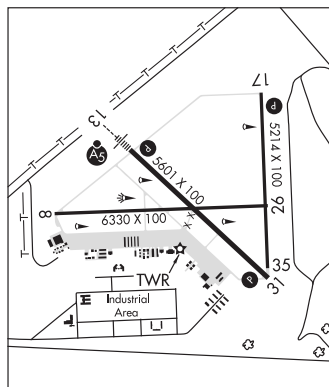
AIRSPACE: CLASS D svc 1300-0100Z‡; other times CLASS E.

RADIO AIDS TO NAVIGATION: NOTAM FILE AUS.

CENTEX (H) VORTACW 112.8 CWK Chan 75 N30°22.71' W97°31.79' 205° 33.9 NM to fld. 593/6E.

GARYS NDB (LOMW) 272 RU N29°57.52' W97°56.94' 124° 6.0 NM to fld. 819/7E. NOTAM FILE HYI.

ILS 108.7 I-RUM Rwy 13. LOM GARYS NDB. ILS and LOM unmonitored.



**AVENGER FLD** (See SWEETWATER on page 401)

**BAILES** (See ANGLETON on page 231)