

LAFAYETTE RGNL/PAUL FOURNET FLD (LFT)(KLFT) P (AR) 2 SE UTC-6(-5DT)

HOUSTON
H-7D, L-21B, 22E, GOMC
IAP, AD

N30°12.30' W91°59.27'

42 B Class I, ARFF Index B NOTAM FILE LFT

RWY 04R-22L: H800X150 (ASPH-GRVD) S-140, D-170, 2S-175,
2D-290 PCN 67 F/C/X/T MIRL

RWY 04R: REIL. PAPI(P4L)—GA 3.0° TCH 50'. RVR-R Pole. Rgt tfc.

RWY 22L: MALSR. PAPI(P4L)—GA 3.0° TCH 50'. RVR-T Thld dspcd
342'. Trees.

RWY 11-29: H5400X148 (ASPH-GRVD) S-85, D-110, 2S-140,
2D-175 PCN 5 F/D/X/T MIRL

RWY 11: REIL. PAPI(P4L)—GA 3.0° TCH 36'. Trees. Rgt tfc.

RWY 29: REIL. PAPI(P4L)—GA 3.0° TCH 51'. Thld dspcd 250'. Tree.

RWY 04L-22R: H4099X75 (ASPH) S-25, D-32 PCN 11 F/D/X/T MIRL

RWY 04L: REIL. PAPI(P2L)—GA 3.0° TCH 26'. Tree.

RWY 22R: REIL. PAPI(P2L)—GA 3.0° TCH 26'. Tree. Rgt tfc.

RUNWAY DECLARED DISTANCE INFORMATION

RWY 04L: TORA-4099 TODA-4099 ASDA-4099 LDA-4099

RWY 04R: TORA-8001 TODA-8001 ASDA-8001 LDA-8001

RWY 11: TORA-5401 TODA-5401 ASDA-5401 LDA-5401

RWY 22L: TORA-8001 TODA-8001 ASDA-8001 LDA-7659

RWY 22R: TORA-4099 TODA-4099 ASDA-4099 LDA-4099

RWY 29: TORA-5401 TODA-5401 ASDA-5401 LDA-5401

ARRESTING GEAR/SYSTEM

RWY 04R: EMAS

RWY 22L: EMAS

RWY 29: EMAS

SERVICE: S4 **FUEL** 100LL, JET A **OX** 1, 4 **LGT** Dusk-Dawn. When twr clsd **ACTIVATE** MALSR Rwy 22L —CTAF, MIRL
Rwy 04L-22R not avbl.

MILITARY— A-GEAR Rwy 22L EMAS 380.67' x 170'. Rwy 04R EMAS 223' x 170'. Rwy 29 EMAS 170' x 448'. **FUEL**
A+ (C337-288-3940.) (NC-100LL, A)

AIRPORT REMARKS: Attended continuously. Numerous birds on and invof arpt. PPR for unscheduled air carrier ops with more
than 30 passenger seats call arpt manager 337-266-4400. Rwy 04L-22R not avbl for air carrier ops with more than 30
passenger seats, rwy closed 0430-1130Z±. Ctc ground control prior to push back from terminal. 155' oil rig 1 NM
southeast of arpt. Twy B between Twy C and Twy D clsd to acft with wingspan over 80'. Twy F south of Twy B clsd to
single wheel acft over 25,000 lbs and dual wheel acft over 32,000 lbs. Twy F south of Twy B reduces to 40' wide. Use
caution: twr blind spots on Twy M east and west of Twy E.

AIRPORT MANAGER: (337) 226-4401

WEATHER DATA SOURCES: ASOS 134.05 (337) 262-2757.

COMMUNICATIONS: CTAF 118.5 ATIS 134.05 UNICOM 122.95

RCO 122.35 (DE RIDDER RADIO)

® **APP/DEP CON** 121.1 (020°-210°) 128.7 (211°-019°) (1130-0430Z±)

® **HOUSTON CENTER APP/DEP CON** 126.35 (0430-1130Z±)

TOWER 118.5 (1130-0430Z±) **GND CON** 121.8 **CLNC DEL** 125.55

AIRSPACE: CLASS C svc ctc **APP CON** svc 1130-0430Z±; other times CLASS E.

RADIO AIDS TO NAVIGATION: NOTAM FILE LFT.

(L) **VORTACW** 109.8 LFT Chan 35 N30°11.63' W91°59.55' at fld. 36/3E.

TACAN AZIMUTH unusable:

295°-320° blo 4,000'

LAFFS NDB (LOMW) 375 LF N30°17.36' W91°54.47' 216° 6.5 NM to fld. 21/3E.

ILS/DME 110.9 I-TYN Chan 46 Rwy 04R. Class IE.

ILS/DME 109.5 I-LFT Chan 32 Rwy 22L. Class IE. LOM LAFFS NDB. ILS and LOM unmonitored when ATCT clsd.

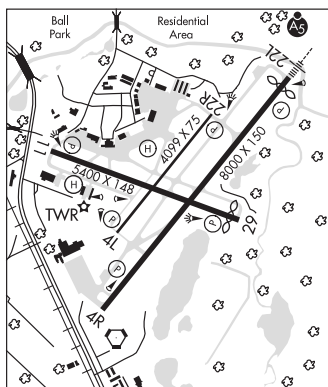
ASR (1130-0430Z±)

HELIPAD H1: H50X50 (ASPH) PERIMETER LGTS

HELIPAD H1: RLLS.

HELIPORT REMARKS: Rwy H1 circular pad. Helipad H1 perimeter lgts. Heliport ops to/from helipad between Twys B and F and
the terminal ramp, avoid overflight of the terminal and other buildings in the 270°-020° quadrant from the helipad.

Lead-in lgts two ingress paths. Helicopter parking pads avbl.



LAFFS N30°17.36' W91°54.47' NOTAM FILE LFT.

NDB (LOMW) 375 LF 216° 6.5 NM to Lafayette Rgnl/Paul Fournet Fld. 21/3E.

HOUSTON
L-21B, 22E