

ST PETERSBURG—CLEARWATER**ST PETE—CLEARWATER INTL** (PIE)(KPIE) P (CG) 8 N UTC-5(-4DT) N27°54.52' W82°41.19'

MIAMI

11 B LRA Class I, ARFF Index C NOTAM FILE PIE

H-8H, L-21D, 24F

RWY 18-36: H9730X150 (ASPH-GRVD) S-75, D-195, 2S-175,

IAP, AD

2D-320, 2D/2D2-700 PCN 74 F/A/W/T HIRL CL

RWY 18: MALSR. TDZL. PAPI(P4L)—GA 3.0° TCH 68'. RVR-TMR**RWY 36:** PAPI(P4L)—GA 3.0° TCH 76'. RVR-TMR Thld dspcd 930'.**RWY 04-22:** H5903X150 (ASPH-GRVD) S-80, D-130, 2S-165,

2D-235 PCN 44 F/A/W/T MIRL

RWY 04: REIL. PAPI(P4L)—GA 3.0° TCH 52'.**RWY 22:** REIL. Road.**LAND AND HOLD—SHORT OPERATIONS**

LDG RWY	HOLD—SHORT POINT	AVBL LDG DIST
RWY 18	04-22	7557
RWY 22	18-36	4514

RUNWAY DECLARED DISTANCE INFORMATION**RWY 04:** TORA-5903 TODA-5903 ASDA-5903 LDA-5903**RWY 18:** TORA-9730 TODA-9730 ASDA-9180 LDA-9180**RWY 22:** TORA-5903 TODA-5903 ASDA-5903 LDA-5903**RWY 36:** TORA-9730 TODA-9730 ASDA-9650 LDA-8720**SERVICE:** S4 FUEL 100, JET A, A1+ OX 1, 2 LGT When twr clsd, ACTIVATE MIRL Rwy 04-22, HIRL Rwy 18-36 and twy lgts—CTAF.**MILITARY—JASU 1**(NC-5) FUEL A, A+ (C727-531-1441, avbl

1000-0300Z±, OT 15 min PN rqr.) J8-Avbl for SAR acct only. (Mil) (NC-100, A A+) OIL O-128.

AIRPORT REMARKS: Attended continuously. Birds on and invof arpt. In minimum visibility cond bright lgts on highway north of arpt may be mistaken for rwy lgts. Noise sensitive area 5 miles north extending 1 mile east and west of LOC southbound to shoreline. Turbojets ldg Rwy 18 and departing Rwy 36 are to use published NS ABTMT procedures. Banner towing prohibited on arpt. Flight Notification Service (ADCUS) avbl.**AIRPORT MANAGER:** 727-453-7800**WEATHER DATA SOURCES:** ASOS (727) 531-3456 HIWAS 116.4 PIE.**COMMUNICATIONS:** CTAF 118.3 ATIS 134.5 UNICOM 122.95

ST PETERSBURG RCO 122.1R 122.2 116.4T (SAINT PETERSBURG RADIO)

② TAMPA APP/DEP CON 125.3

TOWER 118.3 128.4 (1100-0400Z±) GND CON 121.9 CLNC DEL 120.6

AIRSPACE: CLASS D svc 1100-0400Z±; other times CLASS E.**RADIO AIDS TO NAVIGATION:** NOTAM FILE PIE.**ST PETERSBURG (H) VORTAC** 116.4 PIE Chan 111 N27°54.47' W82°41.06' at fld. 6/5W. HIWAS.

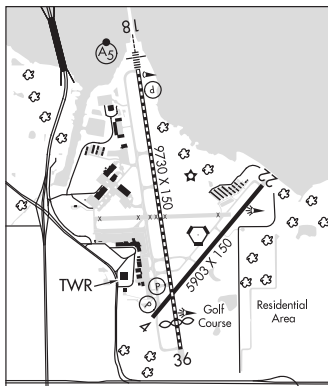
VOR portion unusable:

025°-054° byd 21 NM blo 5,000'

233°-250° byd 20 NM

TACAN AZIMUTH unusable:

133°-146°

CAPOK NDB (LOMW) 360 PI N27°59.71' W82°42.23' 175° 5.3 NM to fld. 23/5W.**ILS** 109.1 I-PIE Rwy 18. Class OF IID. LOM CAPOK NDB. Unmonitored when ATCT clsd.**ILS/DME** 108.7 I-CWT Chan 24 Rwy 36. Class IA. Unmonitored when ATCT clsd.**COMM/NAV/WEATHER REMARKS:** Emerg freq 121.5 not avbl at twr. HIWAS unusable 330°-151° byd 25 NM blo 5000'.**ST PETERSBURG** N27°54.47' W82°41.06' NOTAM FILE PIE.

MIAMI

(H) VORTAC 116.4 PIE Chan 111 at St Pete-Clearwater Intl. 6/5W. HIWAS.

H-8H, L-21D, 24F

VOR portion unusable:

025°-054° byd 21 NM blo 5,000'

233°-250° byd 20 NM

TACAN AZIMUTH unusable:

133°-146°

RCO 122.1R 122.2 116.4T (SAINT PETERSBURG RADIO)

SANTA ROSA N30°36.91' W86°56.24' NOTAM FILE GNV.

NEW ORLEANS

(L) TACAN 133.6 NGS Chan 63 323° 6.4 NM to Whiting Fid Nas South. 147/2W.

L-21C, 22H