

RENO/TAHOE INTL (RNO)(KRNO) P (ANG) 3 SE UTC-8(-7DT) N39°29.95' W119°46.09'

SAN FRANCISCO

4415 B TPA—See Remarks LRA Class I, ARFF Index C NOTAM FILE RNO

H-3B, L-9A

RWY 16R-34L: H11001X150 (CONC-GRVD) S-75, D-185, 2D-350,

2D/2D-850 PCN 88 R/B/W/T HIRL CL

RWY 16R: MALSR. PAPI(P4L)—GA 3.06° TCH 77'. RVR-T Thld dsplcd 1000'.

RWY 34L: MALSR. PAPI(P4L)—GA 3.54° TCH 72'. RVR-R Thld dsplcd 990'. Ground.

RWY 16L-34R: H9000X150 (CONC-GRVD) S-75, D-209, 2D-407,

2D/2D-850 PCN 88 R/B/W/T HIRL CL

RWY 16L: REIL. PAPI(P4L)—GA 3.0° TCH 75'.

RWY 34R: REIL. PAPI(P4L)—GA 3.0° TCH 75'.

RWY 07-25: H6102X150 (CONC-GRVD) S-60, D-170, 2D-260 PCN 72 R/B/W/T MIRL

RWY 07: REIL. PAPI(P4L)—GA 3.2° TCH 48'. Pole.

RWY 25: REIL. PAPI(P4L)—GA 3.0° TCH 45'. Tree.

RUNWAY DECLARED DISTANCE INFORMATION

RWY 07: TORA-5854 TODA-5854 ASDA-6102 LDA-5854

RWY 16L: TORA-9000 TODA-9000 ASDA-9000 LDA-9000

RWY 16R: TORA-11002 TODA-11002 ASDA-11402 LDA-10002

RWY 25: TORA-6102 TODA-6102 ASDA-6102 LDA-6102

RWY 34L: TORA-11002 TODA-11002 ASDA-11402 LDA-10002

RWY 34R: TORA-9000 TODA-9000 ASDA-9000 LDA-9000

SERVICE: S4 FUEL 100LL, JET A1+ OX 1, 2, 3, 4 LGT Rwy 25 PAPI not to be used byd 2 NM due to rapidly rising mountainous terrain. Rwy 34R PAPI unusable byd 6' right of centerline. For MIRL Rwy 07-25 0600-1330Z†, HIRL Rwy 16L-34R and ctrlnr lgts 0800-1330Z† ctc twr. **MILITARY— FUEL A, A+ (C775-858-7300.)** (NC-100LL, A1+)

AIRPORT REMARKS: Attended continuously. Intsv glider activity invof arpt and surrounding areas up to 18000'. Waterfowl all quadrants all seasons. Concentrated NW of Rwy 16R and East of Rwy 16L. Twy M clsd to air carrier acft. Twy J east of rwy 16L-34R clsd to air carrier acft. Twy A btn N Twy B and Twy D clsd to acft with wingspan greater than 149'. Twy C btn Twy L and Twy D clsd to air carrier acft. Twy C btn Twy L and Twy D rstd to acft 100000 lbs or less. TPA—5215(800) single engine, 5415(1000) larger/high performance acft. Noise sensitive area all quadrants. All coml acft ctc gnd ctl for advisories prior to push back on the terminal ramp. Pilots of turbojet acft use recommended NS ABTMT procedures, avbl on req. Pilots of non-turbojet acft use best abatement procedures and settings. Avoid as much as feasible flying over populated areas. Pure jet touch and go low apch and practice instrument apchs are prohibited, acft over 12500 lbs rqr prior written apvl for trng flts, for further info ctc arpt ops 1-877-736-6359. 24 hrs PPR for tran acft parking with wingspans greater than 75'. LRA PPR call 775-784-5585, no after hrs ldg without prior arrangement. Glider/soaring ops 30-50 miles South of arpt dur VFR wx and mountain wave wind cond 1900Z† to SS. Cold temperature rstd arpt. Alt correction required at or blo -15C. Flight Notification Service (ADCUS) avbl. NOTE: See Special Notices—Glider/Soaring Activities around the Reno-Tahoe Intl Arpt, Continuous Power Facilities.

AIRPORT MANAGER: 775-328-6400

WEATHER DATA SOURCES: ASOS (775) 324-6659

COMMUNICATIONS: D-ATIS 135.8 775-348-1550 UNICOM 122.95

RCO 122.2 122.5 (RENO RADIO)

® NORCAL APP/DEP CON 126.3 (220°-035°) 119.2 (036°-219°)

TOWER 118.7 GND CON 121.9 CLNC DEL 124.9 CPDLC (LOGON KUSA)

AIRSPACE: CLASS C svc ctc APP CON.

RADIO AIDS TO NAVIGATION: NOTAM FILE RNO.

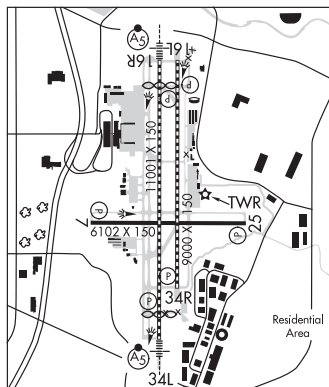
MUSTANG (H) VORTACW 117.9 FMG Chan 126 N39°31.88' W119°39.36' 234° 5.5 NM to fld. 5950/16E.

VORTAC unusable:

200°-230° byd 30 NM blo 13,000'

ILS/DME 110.9 I-RNO Chan 46 Rwy 16R. Class ID. Localizer back course status: localizer backcourse unusable byd 20° left of course.

ILS/DME 109.9 I-AGY Chan 36 Rwy 34L. Class IE. LOC unusable avy 6,400' at thld; within 3.6 NM avy 8,500'.



SPANISH SPRINGS (N86) 10 N UTC-8(-7DT) N39°40.27' W119°43.51'

SAN FRANCISCO

4620 NOTAM FILE RNO

RWY 17-35: 3418X60 (DIRT) RWY LGTS(NSTD)

RWY 35: Bldg. Rgt tlc.

AIRPORT REMARKS: Unattended. Airport clsd indefinitely, main Rwy 17-35 has temporary yellow X's at each end. Rwy 17-35 hazardous when wet. No line of site between ends of rwy. Mountains West and North. Uncontrolled vehicle access across rws. Rwy 17 gradient 2.5% first 500'. Rwy 17-35 thresholds marked with 4 white cement pads flush to the ground. Rwy edge marked with reflectors. Rwy 17-35 rwy lgts NSTD. Rising terrain at rwy edges narrowing primary sfc at center of rwy. Par twy clsd indef.

AIRPORT MANAGER: 775-772-8049

COMMUNICATIONS: CTAF 122.9

CLEARANCE DELIVERY PHONE: For CD ctc NorCal Apch at 916-361-0596.