

WAAS CH <b>78112</b> <b>W26A</b>	APP CRS <b>257°</b>	Rwy Idg TDZE <b>5335</b> Apt Elev <b>5350</b>	<b>8679</b> <b>5335</b> <b>5350</b>
--	------------------------	---	---

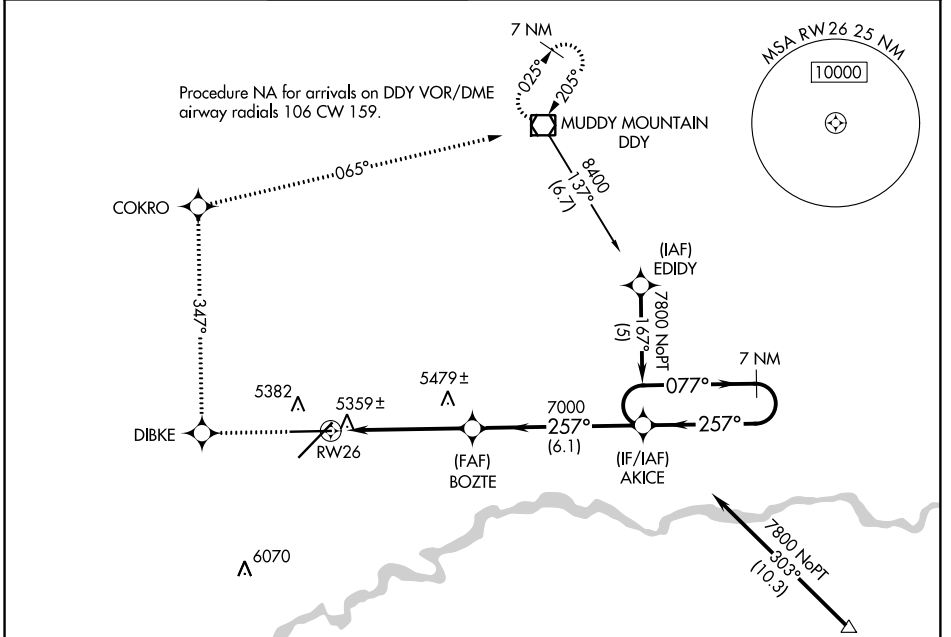
# RNAV (GPS) RWY 26

CASPER/NATRONA COUNTY INTL (CPR)

**▼** For uncompensated Baro-VNAV systems, LNAV/VNAV NA below -25°C (-13°F) or above 38°C (100°F). DME/DME RNP-0.3 NA.

MISSED APPROACH: Climb to 8400 direct DIBKE and right turn via track 347° to COKRO and via track 065° to DDY VOR/DME and hold.

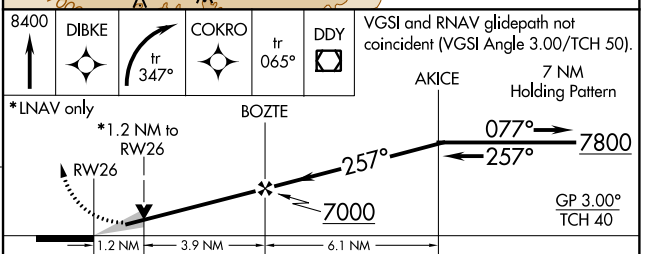
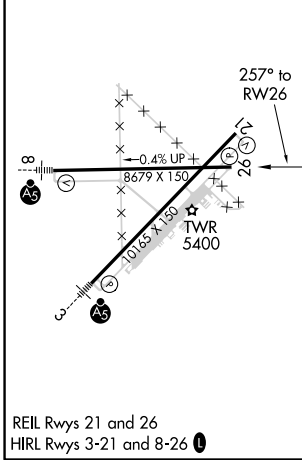
ATIS <b>126.15</b>	CASPER APP CON * <b>120.65 354.1</b>	CASPER TOWER * <b>118.3 (CTAF) 257.8</b>	GND CON <b>121.9</b>	CLNC DEL <b>121.9 257.8</b>	CASPER RADIO <b>122.4 255.4</b>	UNICOM <b>122.95</b>
-----------------------	---	---	-------------------------	--------------------------------	------------------------------------	-------------------------



NW-1, 15 AUG 2019 to 12 SEP 2019

NW-1, 15 AUG 2019 to 12 SEP 2019

ELEV 5350	<b>D</b>	TDZE 5335
-----------	----------	-----------



CATEGORY	A	B	C	D
LPV DA		5585-1	250 (300-1)	
LNAV/VNAV DA		5629-1	294 (300-1)	
LNAV MDA	5740-1	405 (400-1)	5740-1¼	405 (400-1¼)
CIRCLING	5780-1 430 (500-1)	5800-1 450 (500-1)	5800-1½ 450 (500-1½)	5900-2 550 (600-2)