

VOR/DME DDY 116.2 Chan 109	APP CRS 203°	Rwy Idg 10165 TDZE 5330 Apt Elev 5344
--	------------------------	--

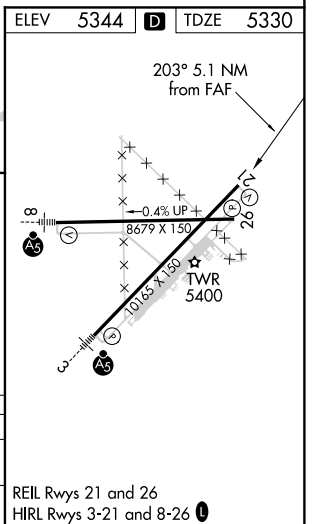
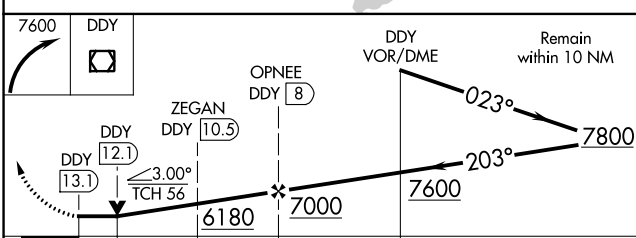
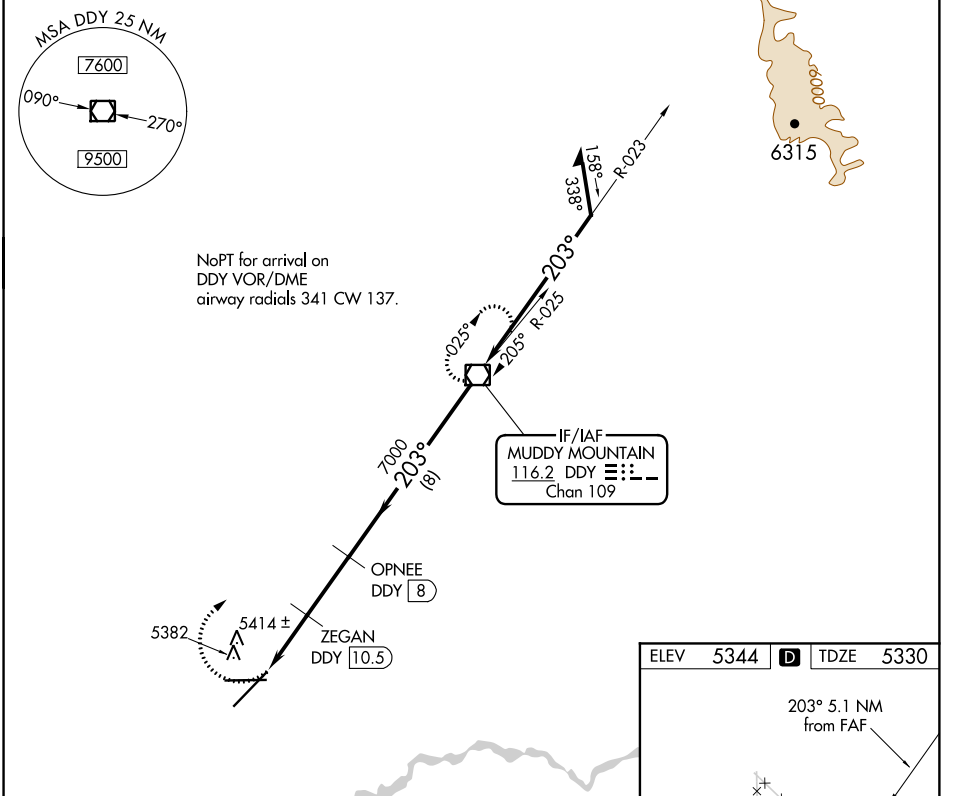
VOR/DME RWY 21

CASPER/NATRONA COUNTY INTL (CPR)

⚠ VDP NA with Douglas altimeter setting. When local altimeter setting not received, use Douglas altimeter setting: Increase all MDAs 180 feet and S-21 visibility Cats C and D ½ mile, Circling visibility Cats C and D ¼ mile.

⚠ MISSED APPROACH: Climbing right turn to 7600 direct DDY VOR/DME and hold.

ATIS 126.15	CASPER APP CON * 120.65 354.1	CASPER TOWER * 118.3 (CTAF) 257.8	GND CON 121.9	CLNC DEL 121.9 257.8	CASPER RADIO 122.4 255.4	UNICOM 122.95
-----------------------	---	---	-------------------------	--------------------------------	------------------------------------	-------------------------



CATEGORY	A	B	C	D
S-21	5680-1 350 (400-1)			
CIRCLING	5720-1 376 (400-1)	5800-1 456 (500-1)	5800-1½ 456 (500-1½)	5900-2 556 (600-2)

NW-1, 15 AUG 2019 to 12 SEP 2019

NW-1, 15 AUG 2019 to 12 SEP 2019