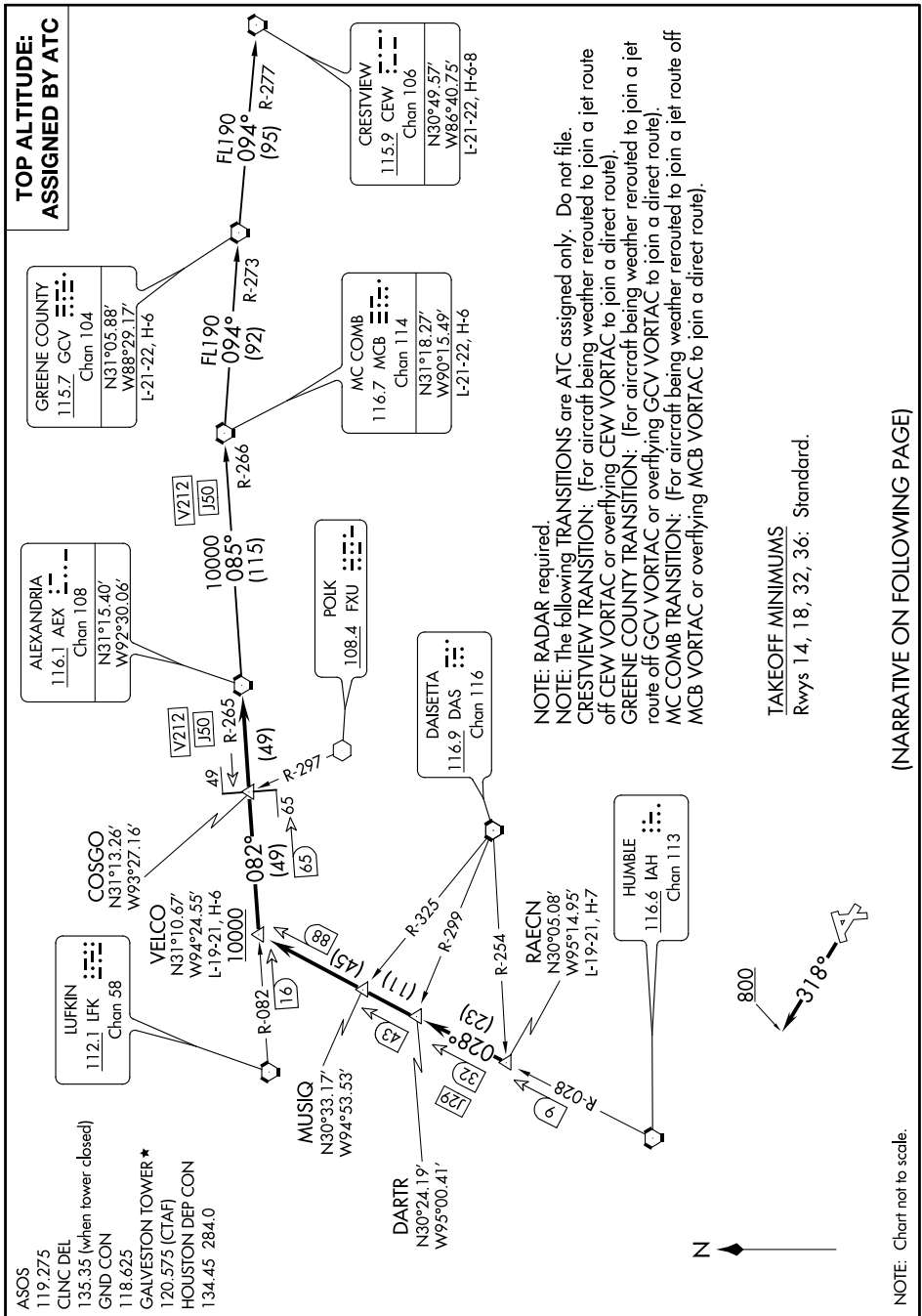


# ALEXANDRIA ONE DEPARTURE

SC-5, 15 AUG 2019 to 12 SEP 2019



**TOP ALTITUDE:  
ASSIGNED BY ATC**

**ALEXANDRIA**  
116.1 AEX  
Chan 108  
N31°15.40'  
W92°30.06'

**GREENE COUNTY**  
115.7 GCV  
Chan 104  
N31°05.88'  
W88°29.17'  
L-21-22, H-6

**MC COMB**  
116.7 MCB  
Chan 114  
N31°18.27'  
W90°15.49'  
L-21-22, H-6

**CRESTVIEW**  
115.9 CEW  
Chan 106  
N30°49.57'  
W86°40.75'  
L-21-22, H-6-8

ASOS 119.275  
CLNC DEL 135.35 (when tower closed)  
GND CON 118.625  
GALVESTON TOWER ★ 120.575 (CTAF)  
HOUSTON DEP CON 134.45 284.0

**NOTE:** RADAR required.  
NOTE: The following TRANSITIONS are ATC assigned only. Do not file.  
CRESTVIEW TRANSITION: (For aircraft being weather routed to join a jet route off CEW VORTAC or overflying CEW VORTAC to join a direct route).  
GREENE COUNTY TRANSITION: (For aircraft being weather routed to join a jet route off GCV VORTAC or overflying GCV VORTAC to join a direct route).  
MC COMB TRANSITION: (For aircraft being weather routed to join a jet route off MCB VORTAC or overflying MCB VORTAC to join a direct route).

TAKEOFF MINIMUMS  
Rwys 14, 18, 32, 36: Standard.

(NARRATIVE ON FOLLOWING PAGE)

NOTE: Chart not to scale.

# ALEXANDRIA ONE DEPARTURE

SC-5, 15 AUG 2019 to 12 SEP 2019