

(BLTWY6.BLTWY) 19115

AL-164 (FAA)

SCHOLES INTL AT GALVESTON (GLS)

BLTWY SIX DEPARTURE (RNAV)

GALVESTON, TEXAS

ASOS
 119.275
 CLNC DEL
 135.35 (When tower closed)
 GND CON
 118.625
 GALVESTON TOWER *
 120.575 (CTAF)
 HOUSTON DEP CON
 134.45 284.0

**TOP ALTITUDE:
 ASSIGNED BY ATC**

NOTE: RADAR required.
 NOTE: DME/DME/IRU or GPS required.
 NOTE: RNAV 1.

TAKEOFF MINIMUMS

Rwys 14, 18, 32, 36:
 Standard with minimum climb of 500' per NM to 520.

DEPARTURE ROUTE DESCRIPTION

TAKEOFF RWY 14: Climb on heading 138° to 520 for RADAR vectors to DREMR, thence

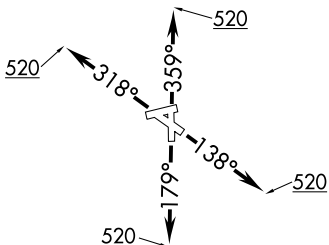
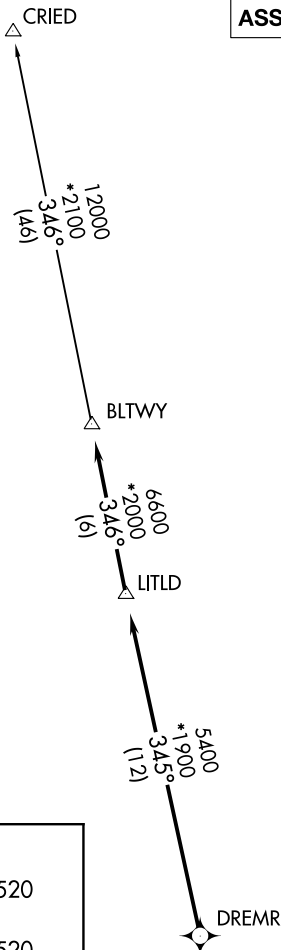
TAKEOFF RWY 18: Climb on heading 179° to 520 for RADAR vectors to DREMR, thence

TAKEOFF RWY 32: Climb on heading 318° to 520 for RADAR vectors to DREMR, thence

TAKEOFF RWY 36: Climb on heading 359° to 520 for RADAR vectors to DREMR, thence

...on track 345° to LITLD, then on track 346° to BLTWY, then on (transition). Maintain ATC assigned altitude. Expect filed altitude 10 minutes after departure.

CRIED TRANSITION (BLTWY6.CRIED)



NOTE: Chart not to scale.

BLTWY SIX DEPARTURE (RNAV)

(BLTWY6.BLTWY) 25APR19

GALVESTON, TEXAS
SCHOLES INTL AT GALVESTON (GLS)

SC-5, 15 AUG 2019 to 12 SEP 2019

SC-5, 15 AUG 2019 to 12 SEP 2019